



Rail Signalling & Power

Your Single Source Partner



 *Rail Signalling and Power*

Product and Services Catalogue

www.rsprail.co.uk | 01752 969321



Introduction to RSP

Rail Signalling & Power; More than just a leading UK supplier of Signalling and Power products

About RSP

RSP has an experienced workforce focussed on delivering high quality design, manufacturing and test of electrical and electronic housings to the UK Rail industry.

The company is a member of the Hampden Group, a leading provider of specialist insurance, investment and financial support services.

Our Team

We have a team of IRSE licenced signalling engineers and mechanical engineers with a wealth of knowledge and experience on both mainline and mass transit projects – across overseas and UK markets. Our specialised services cover Signalling and E&P works from concept design, detailed wiring design all the way to entry into service and project handback.

The multi-skilled teams of installation and testing engineers are co-located with our designers to offer an holistic and innovative solution in the most efficient way possible.

Our Senior Team have over 100 years combined experience delivering some of the world's most complex projects.

Get in touch today

Call: 01752 969321

Visit: www.rsprail.co.uk





Table of Content

Click a page to jump straight to it

Rail:

▣ Services	5
▣ Plug Couplers	8
▣ Component Boards	10
▣ Magshields	15

Signalling:

▣ Signalling Location Cases	18
▣ Relocatable Equipment Buildings (REB)	19
▣ Equipment Racks	20
▣ Signal Aspect Flashing Relays (SAFR)	21

Power:

▣ Functional Supply Points (FSP)	23
▣ FSP Range Overview	24
▣ Power Product Selector	25
▣ FSP01/02 Switchgear	26
▣ FSP03 Switchgear	37
▣ FSP04 Switchgear	56
▣ TC04 Terminal Chambers	77
▣ Principal / Auxiliary Supply Points (PSP/ASP)	114
▣ Domestic Network Operator Cubicles (DNO)	116
▣ Points Heating Control Cubicles (PHCC)	118
▣ Level Crossing Lighting Control (LCU/LCC)	120

Rail Signalling Power





RSP Services - Design

Overview

Rail Signalling & Power have a team of IRSE licensed signalling and mechanical engineers with a wealth of knowledge and experience. Our specialised services cover those activities undertaken in Signalling and Electrification & Plant work packages from GRIP 3 through to GRIP 8. We are also experienced in undertaking CRE and CEM roles as required. Our engineering design services are delivered from our modern UK design office. We have proven experience across a range of safety-critical sectors and clients. Our engineering designers are focussed on providing a service to deliver an innovative design solution, to both electrical and mechanical engineering problems and work in accordance with CDM regulations and ISO 9001.

RSP can design the following equipment:

- ❑ GRIP 3-8
- ❑ E&P Design Works
- ❑ Stage Works & Enabling Designs
- ❑ Design Modifications
- ❑ Correlation Updates
- ❑ Final Record Updates & Returns to NRG
- ❑ Product Development
- ❑ Power/Volt Drop & Heating Calculations
- ❑ 2D Microstation
- ❑ 3D Solidworks



Contact us to order or get more info

Call us on **01752 969321**

Alternately you can fill out *our online form*

Overview

Rail Signalling & Power are manufacturers of equipment housings for both Signalling and E&P solutions. From simple Trackside Connection Boxes (TCB) to full size Relocatable Equipment Buildings (REB) or Principal Supply Points (PSP), RSP have the knowledge and capabilities. Working from our factory in Saltash, Cornwall, we can design, manufacture and test complete housing solutions offering our clients and its project the increased safety of off site manufacturing.

RSP can build the following equipment:

- Functional Supply Points (FSP)
- Relocatable Equipment Building (REB)
- DNO Cubicles (DNO)
- Signalling Location Case (LOC)
- Auxiliary Supply Points (ASP)
- Points Heating Control Cubicle (PHCC)
- Signal Aspect Flashing Relay (SAFR)
- Principal Supply Points (PSP)
- Trackside Disconnection Box (TCB)
- Lighting Control Cubicles (LCC)



Contact us to order or get more info

Call us on **01752 969321**

Alternately you can fill out *our online form*



RSP Services - Supply

Overview

Rail Signalling & Power are specialist in Rail Cat numbers and PADS approved products. If you are looking for a supplier of Network Rail approved products and components then look no further than RSP. We are an entrusted supplier of materials into the rail industry with a proven track record in helping to source and supply to keep to project and clients timescales. Serving the rail infrastructure contractors and Network Rail itself, RSP offer a dedicated project support network or just a simple product supply depending on the requirements of the project.

RSP can supply the following equipment:

- ❑ Rail Cat. No's
- ❑ NR PADS Approved Products
- ❑ Signalling
- ❑ Power
- ❑ Telecoms
- ❑ Electrical
- ❑ Mechanical
- ❑ Fixings
- ❑ 2BA Covers
- ❑ SIN119
- ❑ Plug & Play
- ❑ Cable



Contact us to order or get more info

Call us on **01752 969321**

Alternately you can fill out *our online form*



Wired Plugs and Receptacles

A full range of Network Rail Product Accepted pre-wired, fully assembled and tested plugs and receptacles aka "Plug Couplers"

Key Features:

- Reduced installation time, improved reliability and improved project safety.
- Assembled using only Network Rail accepted signalling wire.
- All plug couplers conform to military specification MIL-DTL-5015
- All plug couplers come with a free ends available in a range of standard lengths; 0.3m, 0.5m, 1.0m, 1.5m, 2.0m
- Available in Front or Rear Panel mounting depending on application
- Can be supplied as a standalone product or speak to us about designing plug couplers into a fully integrated project delivery solution.



Contact us to order or get more info

Call us on **01752 969321**

Alternately you can fill out *our online form*



Wired Plugs and Receptacles

Cable	Receptacles	General Use	MCB-OD	Signal & Indicators	TPWS	IBCL & HyDrive	Point Operating Equipment	Train Detection	Lineside Cabling	Lineside AzLM & Quad Cabling
Black BS6231 Type CK 2.5mm ²	MIL5015 Receptacle (F) to Free End									
	MIL5015 Receptacle (M) to Free End									
White DEF STAN 61-12 Pt6 Type 3 0.75mm ²	MIL5015 Receptacle (F) to Free End									
	MIL5015 Receptacle (M) to Free End									
3 Wire Bl/Wh/Scr Type A4	MIL5015 Receptacle (F) to Free End									
A4 2 core + screen	MIL5015 Receptacle (F) to Free End									
Blue & Yellow 4 Wire DEF STAN 61-12 Pt6 Type 3 1.0mm ²	MIL5015 Receptacle (F) to Free End									
Blue & Yellow DEF STAN 61/12 Pt6 Type 3 1.0mm ²	MIL5015 Receptacle (F) to Free End									

Component Boards

A comprehensive range of pre-assembled and factory tested component boards.

Key Features:

- Easy to install and sized to fit in a standard single (or double where stated) size BR930 series relay slot.
- Robust construction with board made from either Stainless Steel or Paxolin.
- Featuring 400V rated Weidmüller 2.5mm² screw terminal blocks.

Need a tailored design?

Our IRSE licensed designers can give you the bespoke solution you need. Choose from our existing product selection or contact us to have a bespoke item made.



Contact us to order or get more info

Call us on **01752 969321**

Alternately you can fill out *our online form*

Resistor Plate Range

Application	Description	Components	Part No.
Point	Single Point End	2 x 1k Ω 10W	DLS20021
	Single Point End	2 x 1.5k Ω 10W	DLS20252
	Double Point End	4 x 1k Ω 10W	DLS20023
	Clamp Lock	2 x 2.2k Ω 10W	DLS20104
Signal	Double Flashing Aspect Signal	2 x 680 Ω 10W	DLS20022
	Double Fibre Optic Banner Signal	2 x 47 Ω 50W	DLS20026
	Position Light Signal	4 x 2.2 Ω 10W	DLS20101
	ECRO	1 x 1.2 Ω 2.5W	DLS20106
	Fibre Optic Banner Signal	1 x 4.7 Ω 50W	DLS20107
TPWS	1 Resistor	1 x 3.9k Ω 25W	DLS20032
	2 Resistor	2 x 3.9k Ω 25W	DLS20076
	AWS	2 x 5.6 Ω 25W	DLS20142
Level Crossing	Audible Warning Volume Limiter (Double Width)	6 x 680 Ω 2.5W 6 x 1k Ω 2.5W	DLS20165
General	1 Resistor 0.25W	1 x 20k Ω 0.25W	DLS20280
	1 Resistor 0.4W	1 x 15 Ω 0.4W	DLS20279
	1 Resistor 2.5W	1 x 10k Ω 2.5W	DLS20082
	1 Resistor 4W	1 x 15 Ω 4W	DLS20281
	1 Resistor 5W	1 x 1.2 Ω 5W	DLS20257
	1 Resistor 25W	1 x 33 Ω 25W	DLS20033
	1 Resistor 25W	1 x 10k Ω 25W	DLS20267
	1 Resistor 50W	1 x 300 Ω 50W	DLS20297
	2 Resistor 2.5W	2 x 10k Ω 2.5W	DLS20030
	2 Resistor (10W)	1 x 10k Ω 10W 1 x 2.2 Ω 10W	DLS20171
	2 Resistor 360 (50W)	3 x 360 Ω 50W	DLS20164
	2 Resistor 470 (50W)	2 x 470 Ω 50W	DLS20037
	3 Resistor (10W)	2 x 1k Ω 10W 1 x 2.2 Ω 10W	DLS20170
	4 Resistor 2.5W	4 x 10k Ω 2.5W	DLS20031



Component Boards

Diode Plate Range

Application	Description	Components	Part No.
General	1 Diode 400V	1 x IN5404 400V 3A	DLS20039
	4 Diode 400V	4 x IN5404 400V 3A	DLS20100
	4 Diode 50V	4 x IN4001 50V 3A	DLS20179



Component Boards

Capacitor / Resistor /Diode (HO / JO / HOJ) Plate Range

Application	Description	Components	Part No.
HO Board	1 Capacitor, 1 Resistor	1 x 470µF 100V 1 x 330Ω 25W	DLS20131
	1 Capacitor, 1 Resistor	1 x 3300µF 11V 1 x 330Ω 25W	DLS20132
	1 Capacitor, 1 Resistor	1 x 2200µF 100V 1 x 6.8Ω 25W	DLS20136
	2 Capacitors, 2 Resistors	2 x 470µF 100V 2 x 330Ω 25W	DLS20172
	1 Capacitor, 1 Resistor	1 x 470µF 100V 1 x 150Ω 25W	DLS20174
	1 Capacitor, 1 Resistor	1 x 2200µF 100V 1 x 150Ω 25W	DLS20176
	1 Capacitor, 1 Resistor	1 x 1000µF 100V 1 x 150Ω 25W	DLS20193
	1 Capacitor, 1 Resistor	1 x 4700µF 63V 1 x 100Ω 20W	DLS20294
	1 Capacitor, 1 Resistor	1 x 1000µF 50V 1 x 270Ω 10W	DLS20295
	1 Capacitor, 1 Resistor	1 x 1000µF 50V 1 x 100Ω 20W	DLS20296
HO Board - Double Width	2 Capacitors, 2 Resistors	2 x 2200µF 100V 2 x 6.8Ω 25W	DLS20173
	2 Capacitors, 2 Resistors	1 x 470µF 100V 1 x 1000µF 100V 2 x 150Ω 25W	DLS20175
JO Board	J/O Board 11V	2 x IN5404 400V 3A 2 x 100Ω 2.5W	DLS20133
HOJ Board	1 Capacitor, 1 Diode, 1 Resistor	1 x 470µF 100V 1 x 330Ω 15W 1 x IN4004 400V 1A	DLS20065
HOJ Board - Double Width	2 Capacitors, 2 Diodes, 2 Resistors	2 x 6800µF 63V 2 x 36Ω 2W 2 x IN4004 400V 1A	DLA20231



Component Boards

Dummy Load Plate Range

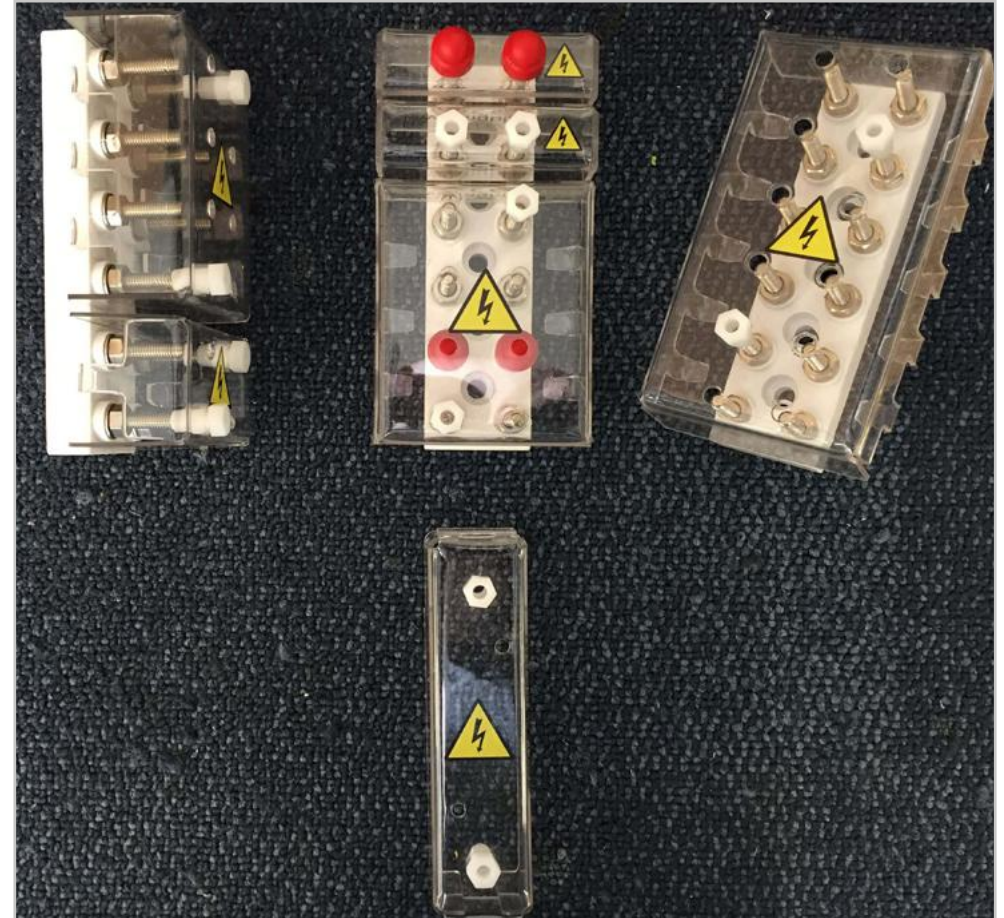
Application	Description	Components	Part No.
ATP	TrF Board	6VA Transformer (CPA10047) 1 x 15Ω 5W	DLS20167

Magshields

A range of covers providing additional barrier protection from live terminals in accordance with NR/L2/SIG/11201 - Mod B3

Key Features:

- Quick and easy installation - average install time of 16 seconds.
- Simple, safe non-intrusive barrier.
- No special tools or equipment needed - only a standard 2BA nut runner required.
- Complete with 4mm test point holes to enable measurement and testing with covers in place.
- Fully compatible with terminals requiring red dome nuts.



Contact us to order or get more info

Call us on **01752 969321**

Alternately you can fill out *our online form*

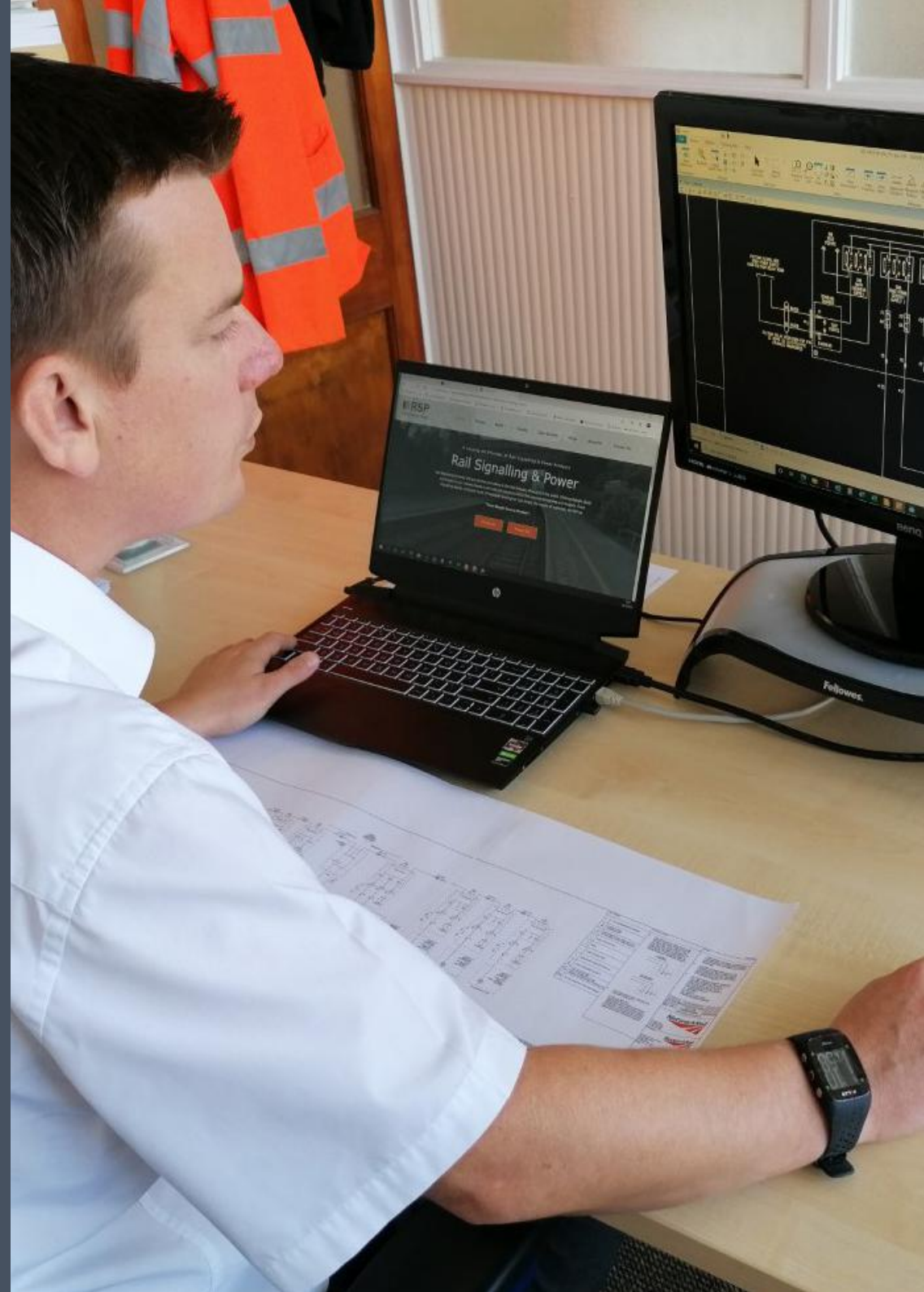


Magshield Product Range

Magshield Range:

Product	Part No.	Railway Cat No.
6-way 2BA 6 Terminal Block Cover	DMS2BA06	0086/043943
4-way 2BA 6 Terminal Block Cover	DMS2BA04	0086/043944
2-way 2BA 6 Terminal Block Cover	DMS2BA02	0086/043945
1-way 2BA 6 Terminal Block Cover	DMS2BA01	0086/043946
BS714 Cartridge Fuse Holder Cover	DMS2BAF1	0086/043947
Pack of 10 Red Dome Nuts for use with 2BA covers	CFR00033	0086/043948
Pack of 20 Red Dome Nuts for use with 2BA covers	CFR00034	0086/043949
Pack of 30 Red Dome Nuts for use with 2BA covers	CFR00035	0086/043950

Rail Signalling Power



Location Cases

A full range of Network Rail Product Accepted full and half width location cases suitable for signalling, telecoms and power applications.

Key Features:

- Built to either your own design or allow us to produce detailed design using our unique RSP standardised approach to provide; greater consistency, improved lead times and cost savings.
- Galvanised mild steel, stainless, steel and GRP options.
- Configured to suit relay and computer based interlocking equipment or to deliver a full Digital Railway ready solution.
- All cases can be supplied full 3A tested in the factory and we can provide the option of accommodating Factory Functional testing.
- Full width case Dimensions; W=1022mm x H=1861mm x D=558mm.
Max Weight = 400Kg.
- Half Width Case Dimensions; W=588mm x H = 1861mm x D=558mm.
Max Weight = 200Kg.

Need a tailored design?

Our IRSE licensed designers can give you the bespoke solution you need.



Contact us to order or get more info

Call us on **01752 969321**

Alternately you can fill out *our online form*

Relocatable Equipment Building

Available in standard Network Rail sizes from type 1 to 9 or made to your bespoke dimensions. RSP can offer an REB to meet your needs from dedicated Signalling rooms to combined rooms or split purpose buildings.

Key Features:

- ▣ Built to either your own design or allow us to produce detailed design using our unique RSP standardised approach to provide; greater consistency, improved lead times and cost savings.
- ▣ Available in a range of RAL colours including standard Green and Grey railway options.
- ▣ Configured to suit relay and computer based interlocking equipment or to deliver a full Digital Railway ready solution.
- ▣ Full range of options available including: additional internal walls, removable side walls, floor re-enforcement, bespoke lighting arrangements, forced air ventilation or air conditioning as required, intruder and fire alarms.
- ▣ All REBs can be supplied full 3A and / or BS EN61439 tested in the factory and we can provide the option of accommodating Factory Functional testing.

Need a tailored design?

Our IRSE licensed designers can give you the bespoke solution you need.



Contact us to order or get more info

Call us on **01752 969321**

Alternately you can fill out *our online form*

Equipment Racks

Whether free standing or wall/floor mounted RSP are experts in providing equipment racks for installation in existing buildings and housings of all shapes and sizes. We can provide support from initial site surveys, 3D modelling, factory build and test all the way to assistance with on-site installation.

Key Features:

- Built to either your own design or allow us to produce full 3d concept and detailed wiring designs using our unique RSP standardised approach to provide; greater consistency, improved lead times and cost savings.
- We can supply single racks or multiple plug coupled or free wired racks to suit.
- Configured for relay and computer based interlocking equipment or power and telecoms applications.
- We have experience in both Network Rail and London underground sites and have key knowledge to overcome the challenges of tight spaces, restricted access, listed structures and many other site issues.
- All racks can be supplied full 3A and / or BS EN61439 tested in the factory and we can provide the option of accommodating Factory Functional testing.

Need a tailored design?

Our IRSE licensed designers can give you the bespoke solution you need.



Contact us to order or get more info

Call us on **01752 969321**

Alternately you can fill out *our online form*



Signal Aspect Flashing Relay

The only Network Rail Accepted Product to replace the old Flashing Aspect Control Unit (FACU).

Key Features:

- Railway Cat No. 086/009191.
- RSP Part No. DLL05246.
- Compliant to NR/SP/SIG/1007.
- Compatible with both incandescent and LED Signals.
- Quick and easy installation with base and unit designed and built to fit into standard BR930 relay slot.
- Adaptor plate available to allow quick and easy replacement of an old FACU module.
- Supplied fully certified and factory tested for improved reliability.



Contact us to order or get more info

Call us on **01752 969321**

Alternately you can fill out *our online form*

Rail
Signalling
Power





Functional Supply Point (FSP)



Functional Supply Point (FSP)

Range Overview

Overview

A Functional Supply Point (FSP) is the equipment tasked with power distribution throughout the rail infrastructure. RSP's range of products cover all installation requirements - from a legacy changeover of a single piece of switchgear to a full FSP equipment housing, offering multiple power supplies and auto reconfiguration facility.

Range

RSP produce a range of FSP products in both class I and class II for use in signalling power distribution systems as defined in NR/L2/ELP/27410. The range conforms to NR/L2/SIGELP/27409 Issue 2.

RSP's FSP01/02 switchgear assemblies is suitable for single and dual end fed systems with manual reconfiguration. Available in both 240V and 650V configurations.

The FSP 03 can be installed within dual end fed, auto reconfiguration systems and can be installed with all approved ARS systems currently in the market place. Switching can be provided for 110V through to 650V installations, both ac and dc.

The FSP04 range is designed specifically for SIN119 solutions to replace legacy installations. Supporting this is the range of TC04 Terminal Chambers which can be used for cable termination to support the whole FSP range.

In House Manufacture And Testing

All our products are built at our manufacturing facilities in Plymouth. Our manufacturing and test staff have a wealth of experience in this field and also hold IRSE licences appropriate to their role. This gives our clients peace of mind that we will deliver a high standard of workmanship and quality which is then verified by our in house testing team, who carry out full 3A testing of each product.

Innovation

The RSP range offers a number of unique advantages to the industry and our customers. We can install up to four 1500VA transformers or up to four 10A T/J's within a single FSP. Alternatively we could provide an FSP that houses a 25Ah point battery system, inclusive of charger. Feeder cables up to 120mm² in both copper and aluminium can also be installed easily, using our sliding gland plates.

Support

All products come with a standard 12 month warranty with an option to extend if required and a minimum 35 year life expectancy. RSP has an experienced team on hand to provide ongoing support pre, during and after sales.



Contact us to order or get more info

Call us on **01752 969321**

Alternately you can fill out *our online form*



Power Product Selector

Use the table below to find your ideal product

FSP Type	Distribution Topology		Architecture Configuration		Installation	
	Single End Fed	Dual End Fed	Manual	Auto	New	Legacy
FSP01						
FSP02						
FSP03						
FSP04						



FSP01 and 02

- Network Rail Product Acceptance Certificate PA05/07055 (Class I) and PA05/07053 (Class II).
- Compliant to NR/L2/SIGELP27409 Issue 2.
- All FSP01 and 02 products come fitted with RSP's unique removable and split-able gland plates.

	FSP Type 20 DLLF2S20	FSP Type 21 DLLF2S21	FSP Type 20 DLLF2P20-02	FSP Type 21 DLLF2P21-02	FSP Type 22 DLLF2P22-02
Class	I	I	II	II	II
Feeder Switches	2	2	2	2	2
Functional Supplies	2	3	2	3	3
Feeder Cable Size (Cu or Al)	16-120mm ²	16-120mm ²	16-120mm ²	16-120mm ²	16-120mm ²
Type of Fuses	BS88	BS88	IEC	IEC	IEC
Dimensions (mm)	W=498 H=346 D=259	W=498 H=346 D=259	W=506 H=400 D=233	W=506 H=400 D=233	W=506 H=400 D=233
Weight	18Kg	18Kg	13.5Kg	13.5Kg	13.5Kg
Railway Cat No.	092/000296	092/000297	054/213902	054/213903	054/213904
Additional Comments	Surge Arrestor Protection provided		Surge Arrestor Protection provided		Labelled for use in 240V systems.



FSP01/02 - Type 20 Class 1

FSP01/02 Switchgear Assembly - Type 20 Class 1

- ❑ Railway Cat No - 092/000296.
- ❑ RSP Part No. DLLF2S20.
- ❑ Class I Distribution Enclosure for 650V Signalling Systems.
- ❑ Surge Arrestor Protection provided.
- ❑ Robust stainless steel enclosure.

Key Features:

- ❑ Dedicated Ring Power IN and OUT Isolators.
- ❑ Compatible with Copper (Cu) or Aluminium (Al) 2c Feeder Cables up to 120mm².
- ❑ Easy cable installation with Magplate sliding split-able Gland Plate.
- ❑ Two Switched and Fused Output Functional Supplies.
- ❑ Functional Supply Fuse Carriers BS88.
- ❑ Compliant to Network Rail specification NR/L2/ELP/27409 Issue 2.
- ❑ Dimensions W=498mm x H=346mm x D=259mm.
- ❑ Weight = 18Kg.



Contact us to order or get more info

Call us on **01752 969321**

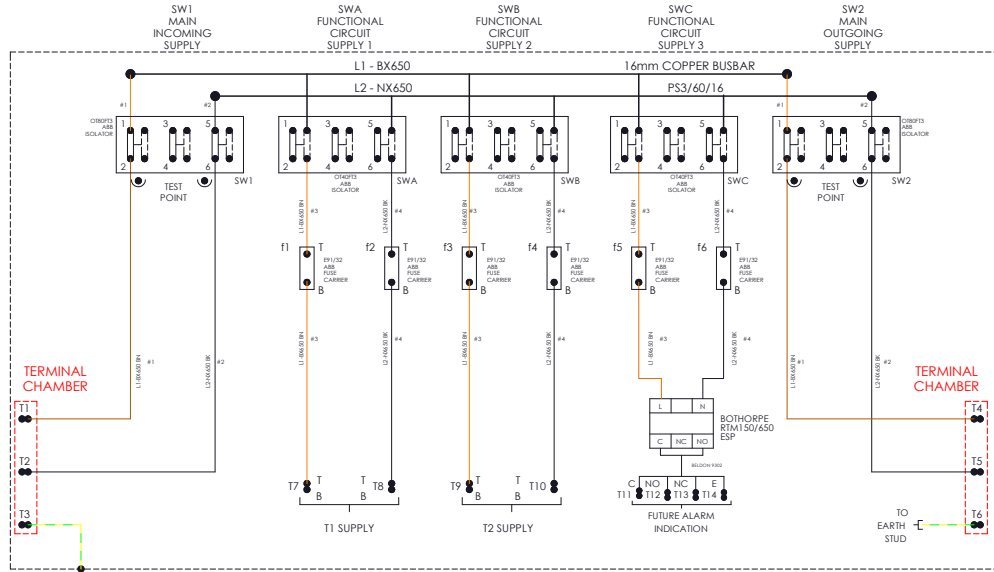
Alternately you can fill out *our online form*



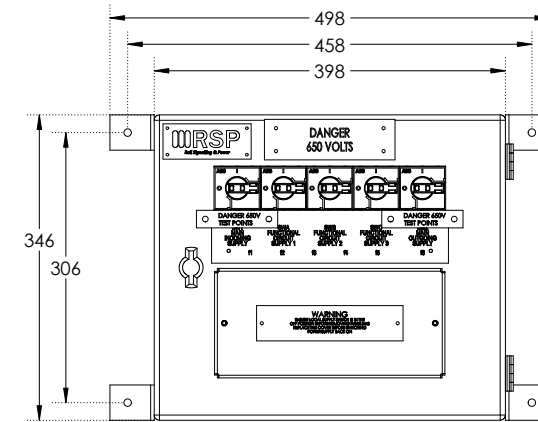
FSP01/02 - Type 20 Class 1

FSP02 Type 20SS

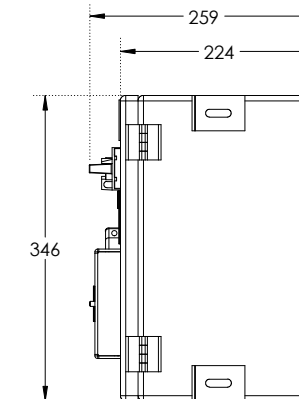
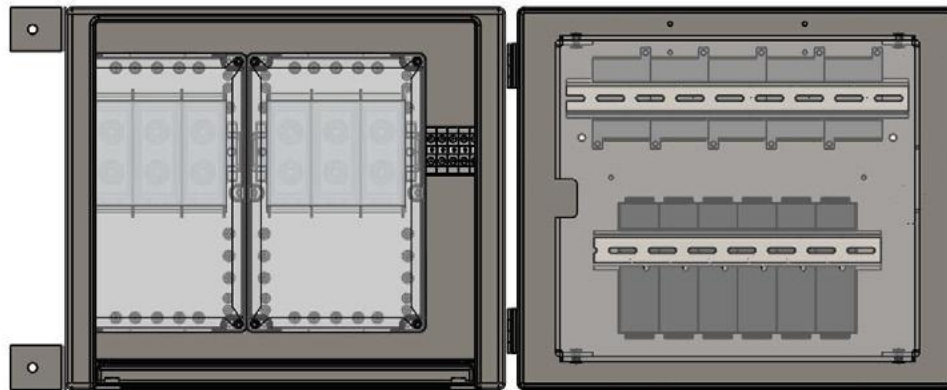
WIRING DIAGRAM



DIMENSIONING



INTERNAL VIEW





FSP01/02 - Type 21 Class 1

FSP01/02 Switchgear Assembly - Type 21 Class 1

- ❑ Railway Cat No. 092/000297.
- ❑ RSP Part No. DLLF2S21.
- ❑ Class I Distribution Enclosure for 650V Signalling Systems.
- ❑ Robust stainless steel enclosure.
- ❑ Surge Arrestor Protection provided.

Key Features:

- ❑ Dedicated Ring Power IN and OUT Isolators.
- ❑ Compatible with Copper (Cu) or Aluminium (Al) 2c Feeder Cables up to 120mm².
- ❑ Easy cable installation with Magplate sliding split-able Gland Plate.
- ❑ Three Switched & Fused Output Functional Supplies.
- ❑ Functional Supply Fuse Carriers BS88.
- ❑ Compliant to Network Rail specification NR/L2/ELP/27409 Issue 2.
- ❑ Dimensions W=498mm x H=346mm x D=259mm.
- ❑ Weight = 18Kg.



Contact us to order or get more info

Call us on **01752 969321**

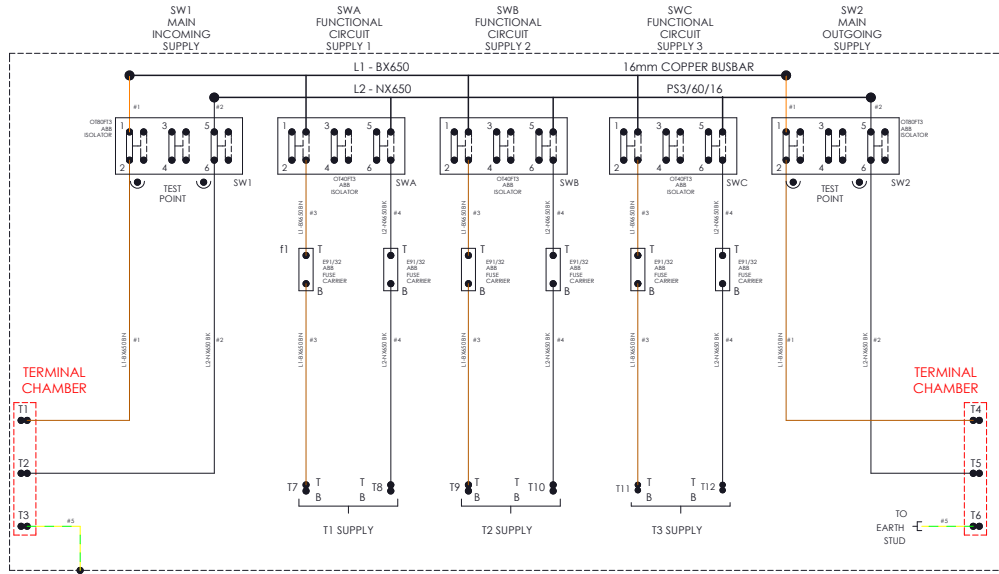
Alternately you can fill out *our online form*



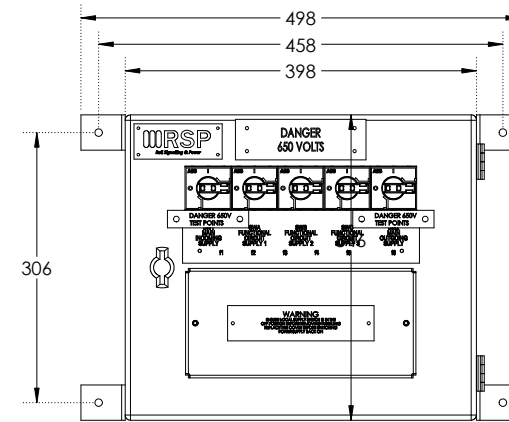
FSP01/02 - Type 21 Class 1

FSP02 Type 21SS

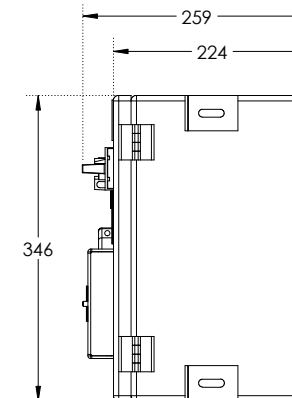
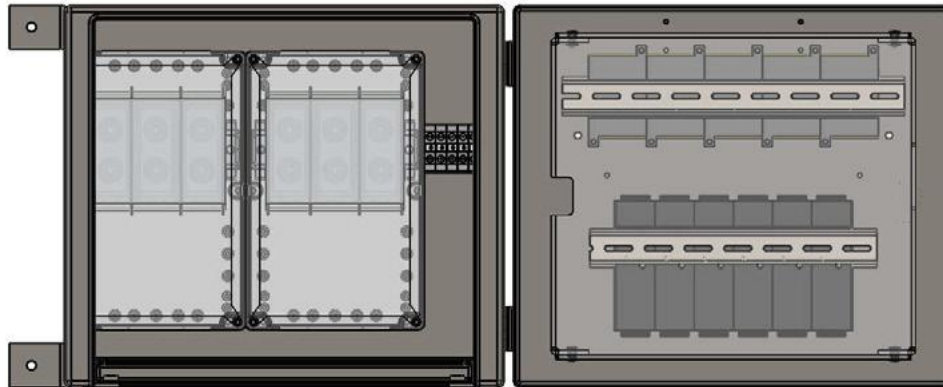
WIRING DIAGRAM



DIMENSIONING



INTERNAL VIEW



FSP01/02 - Type 20

FSP01/02 Switchgear Assembly - Type 20

- Railway Cat No. 054/213902.
- RSP Part No. DLLF2P20-02.
- Class II Distribution Enclosure for 650V Signalling Systems.
- Surge Arrestor Protection provided.

Key Features:

- Dedicated Ring Power IN and OUT Isolators.
- Compatible with Copper (Cu) or Aluminium (Al) 2c Feeder Cables up to 120mm².
- Easy cable installation with Magplate sliding split-able Gland Plate.
- Two Switched and Fused Output Functional Supplies.
- Functional Supply Fuse Carriers IEC60269 (ABB 10x38mm).
- Compliant to Network Rail specification NR/L2/ELP/27409 Issue 2.
- Dimensions W=506mm x H=400mm x D=233mm.
- Weight = 13.5Kg.



Contact us to order or get more info

Call us on **01752 969321**

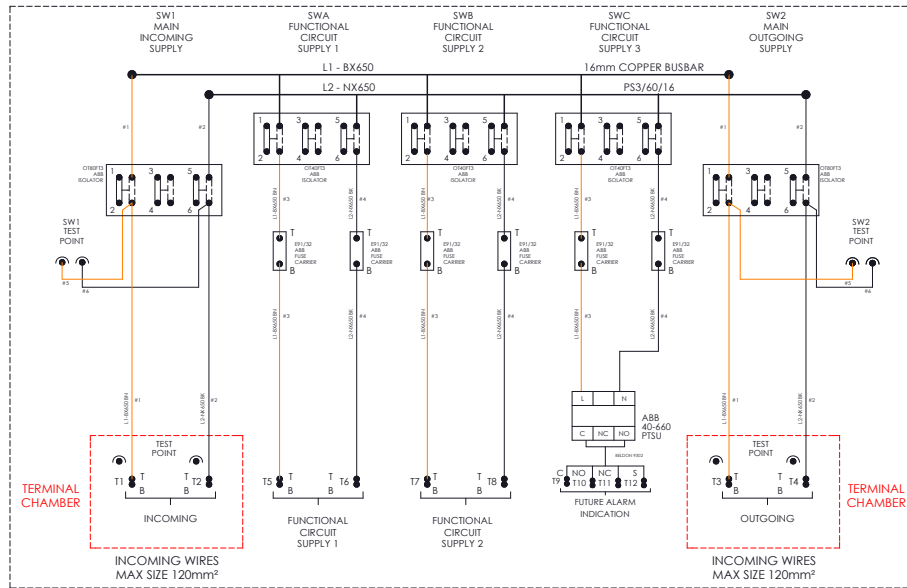
Alternately you can fill out *our online form*



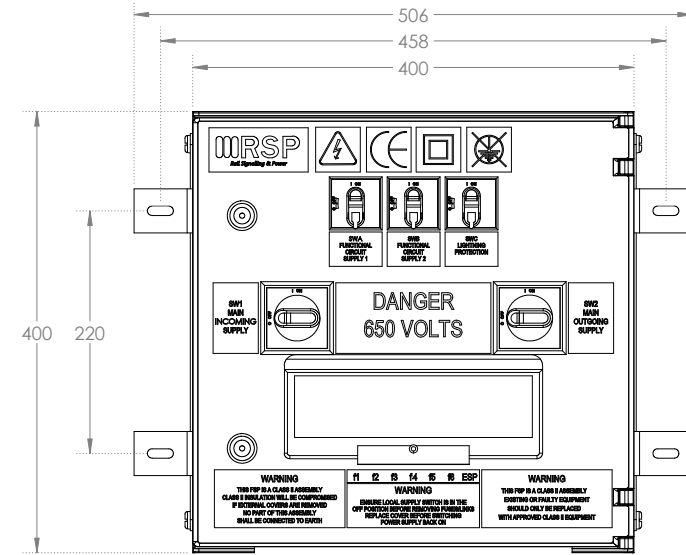
FSP01/02 - Type 20

FSP02 TYPE 20

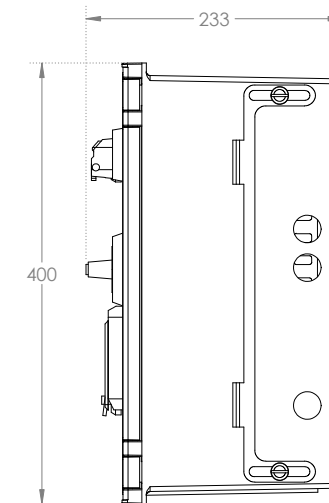
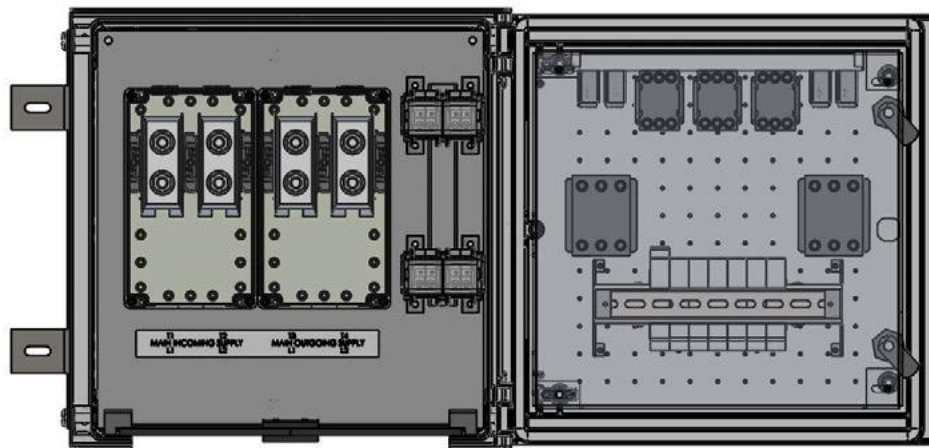
WIRING DIAGRAM



DIMENSIONING



INTERNAL VIEW



FSP01/02 - Type 21

FSP01/02 Switchgear Assembly - Type 21

- Railway Cat No. 054/213903.
- RSP Part No. DLLF2P21-02.
- Class II Distribution Enclosure for 650V Signalling Systems.

Key Features:

- Dedicated Ring Power IN and OUT Isolators.
- Compatible with Copper (Cu) or Aluminium (Al) 2c Feeder Cables up to 120mm².
- Easy cable installation with Magplate sliding split-able Gland Plate.
- Three Switched & Fused Output Functional Supplies.
- Functional Supply Fuse Carriers IEC60269 (ABB 10x38mm).
- Compliant to Network Rail specification NR/L2/ELP/27409 Issue 2.
- Dimensions W=506mm x H=400mm x D=233mm.
- Weight = 13.5Kg.



Contact us to order or get more info

Call us on **01752 969321**

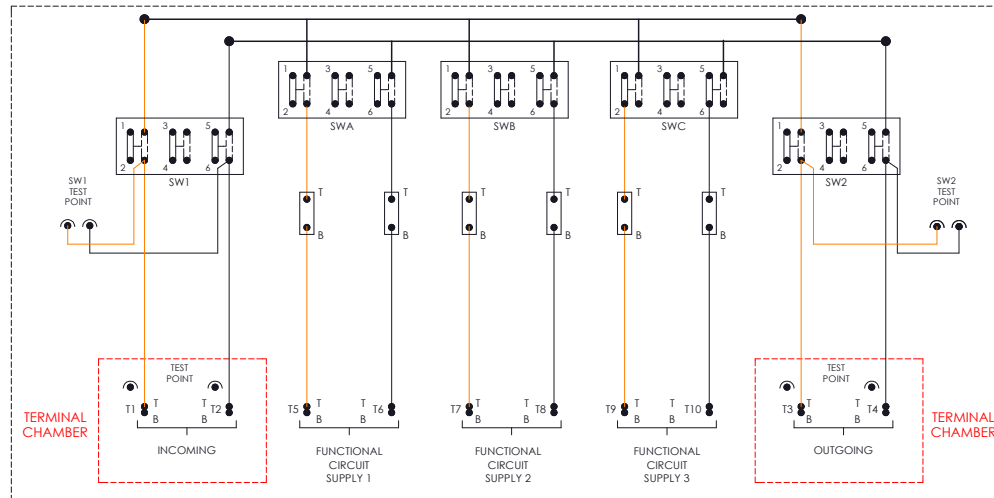
Alternately you can fill out *our online form*



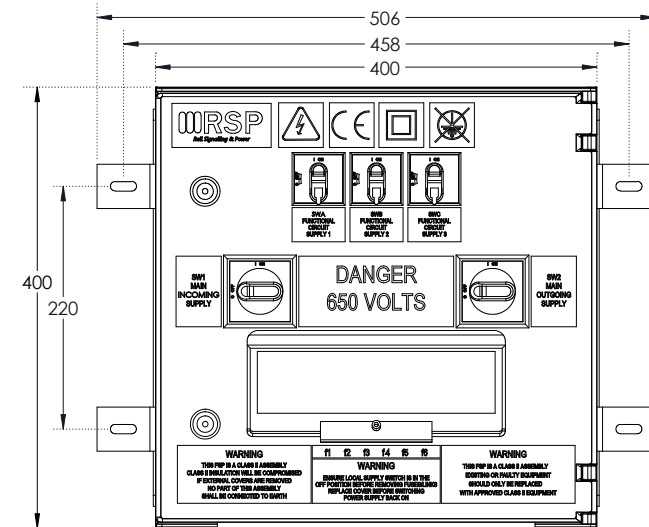
FSP01/02 - Type 21

FSP02 Type 21

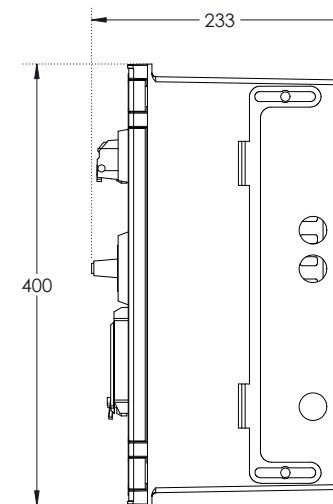
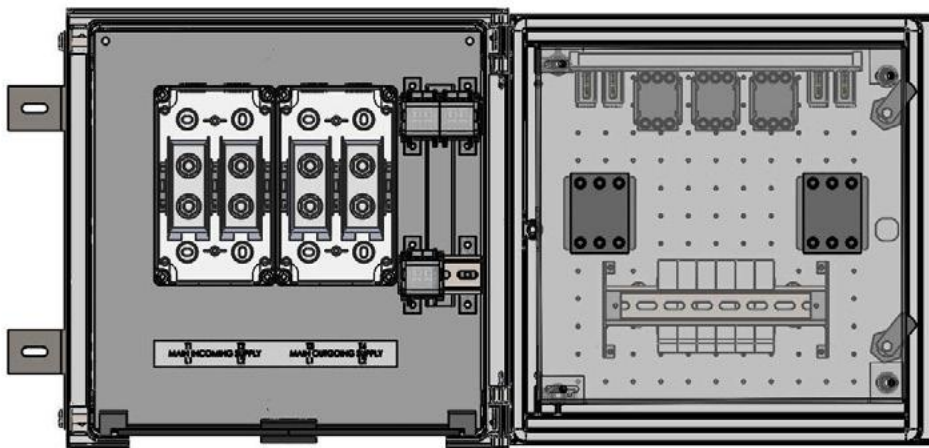
WIRING DIAGRAM



DIMENSIONING



INTERNAL VIEW



FSP01/02 - Type 22

FSP01/02 Switchgear Assembly - Type 22

- Railway Cat No. 054/213904.
- RSP Part No. DLLF2P22-02.
- Class II Distribution Enclosure for 650V Signalling Systems.
- Labelled for use in 240V systems.

Key Features:

- Dedicated Ring Power IN and OUT Isolators.
- Compatible with Copper (Cu) or Aluminium (Al) 2c Feeder Cables up to 120mm².
- Easy cable installation with Magplate sliding split-able Gland Plate.
- Three Switched & Fused Output Functional Supplies.
- Functional Supply Fuse Carriers IEC60269 (ABB 10x38mm).
- Compliant to Network Rail specification NR/L2/ELP/27409 Issue 2.
- Dimensions W=506mm x H=400mm x D=233mm.
- Weight = 13.5Kg.



Contact us to order or get more info

Call us on **01752 969321**

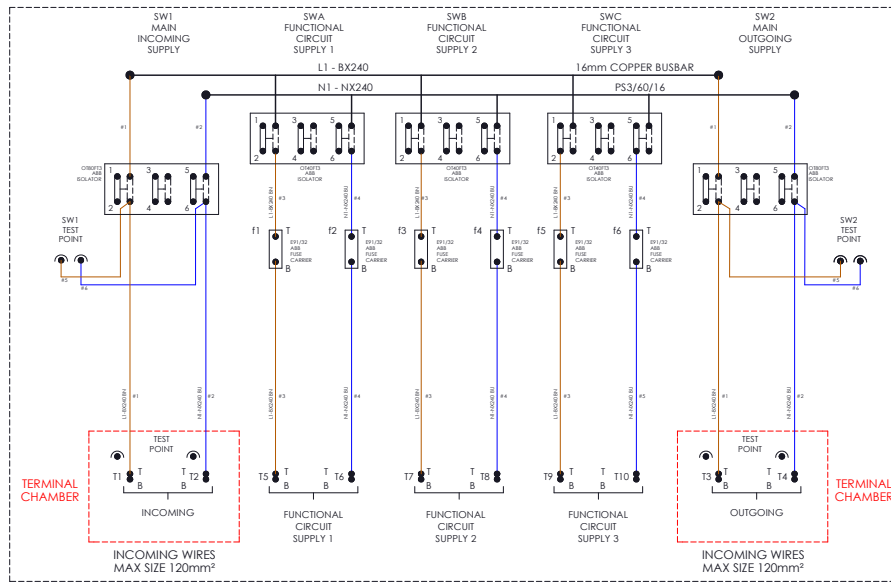
Alternately you can fill out *our online form*



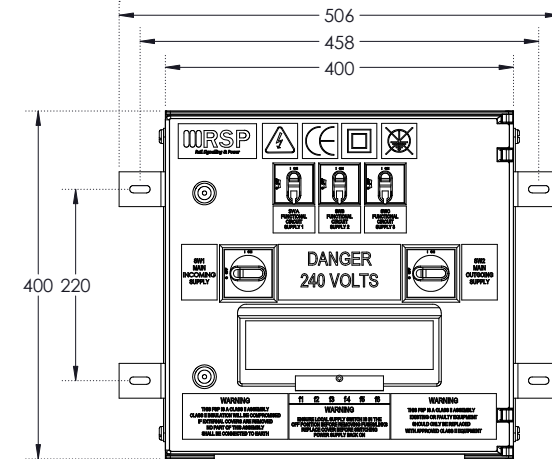
FSP01/02 - Type 22

FSP02 TYPE 22

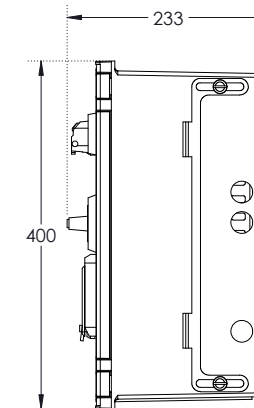
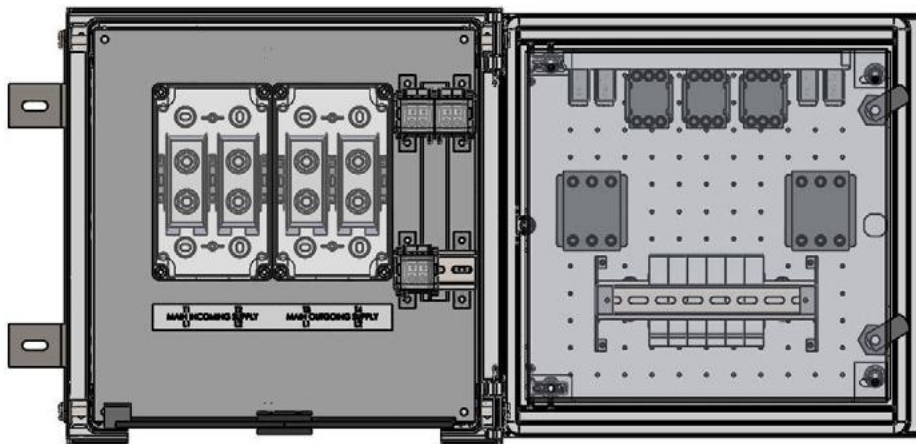
WIRING DIAGRAM



DIMENSIONING



INTERNAL VIEW





FSP03

- Network Rail Product Acceptance Certificate PA05/07053.
- Compliant to NR/L2/SIG/ELP/27409 Issue 2.
- All FSP03s come fitted with RSP's unique removable and split-able gland plates.
- All FSP03 cases are fully compatible with all NWR Product Accepted Automatic Reconfiguration Systems and can be supplied in yellow banded cases made from mild or stainless steel.

	FSP03 Assemblies		FSP03 PRODUCTS							
	FSP03 Type 32 DLF3P32-02	FSP03 Type 32C DLF3P32C	FSP03 Type 30 DLF3P30-02	FSP03 Type 31 DLF3P31-02	FSP03 Type 33 DLF3P33-02	FSP03 Type 34 DLF3P34-02	FSP03 Type 35 DLF3P35-02	FSP03 Type 36 DLF3P36-02	FSP03 Type 37 DLF3P37-02	FSP03 Type 32 Surge Suppressor Module DLF3P32SM
Class	II	II	II	II	II	II	II	II	II	II
Feeder Switches	2 - Mains 3 - ARS	2 - Mains 3 - ARS	2 - Mains 3 - ARS	N/A	N/A	N/A	N/A	N/A	N/A	N/A
Functional Supplies	Dependant on functional FSP03 Module selected		2	4	4	2	2	2	4	N/A
Feeder Cable Size (Cu or Al)	16-120mm ²	16-120mm ²	16-120mm ²	N/A	N/A	N/A	N/A	N/A	N/A	N/A
Type of Fuses	IEC	IEC	IEC	IEC	IEC	IEC	IEC	IEC	IEC	IEC
Dimensions (mm)	Full Width Case	Half Width Case	W=506 H=800 D=233	W=506 H=800 D=228	W=506 H=800 D=228	W=506 H=800 D=228	W=506 H=800 D=228	W=506 H=400 D=233	W=506 H=400 D=228	W=100 H=150 D=99
Weight			18.75Kg	18.75Kg	18.75Kg	18.75Kg	18.75Kg	13.50Kg	13.50Kg	1Kg
Railway Cat No.	054/213905	054/213906	054/213907	054/213908	054/213909	054/213910	054/213911	054/213912	054/213913	054/213914
Additional Comments	Optional Heater and Light available	Optional Heater and Light available		Primary and Secondary fuses		Primary and Secondary fuses		Including termination facility for one spur supply		A single surge suppressor in its own housing



FSP03 - Type 30

FSP03 Switchgear Assembly - Type 30

- ❑ Railway Cat No. 054/213907.
- ❑ RSP Part No. DLLF3P30-02.
- ❑ Class II Distribution Enclosure for 650V Signalling Systems.
- ❑ FSP03 Main Distribution Module.

Key Features:

- ❑ Dedicated Ring Power IN and OUT Isolators.
- ❑ Compatible with Copper (Cu) or Aluminium (Al) 2c Feeder Cables up to 120mm².
- ❑ Easy cable installation with Magplate sliding split-able Gland Plate.
- ❑ Functional Supply Fuse Carriers IEC60269 (ABB 10x38mm).
- ❑ Compliant to Network Rail specification NR/L2/ELP/27409 Issue 2.
- ❑ Dimensions W=506mm x H=800mm x D=233mm.
- ❑ Weight = 18.75Kg.

Support

All products come with a standard 12 month warranty with an option to extend if required and a minimum 35 year life expectancy. RSP has an experienced team on hand to provide ongoing support pre, during and after sales.



Contact us to order or get more info

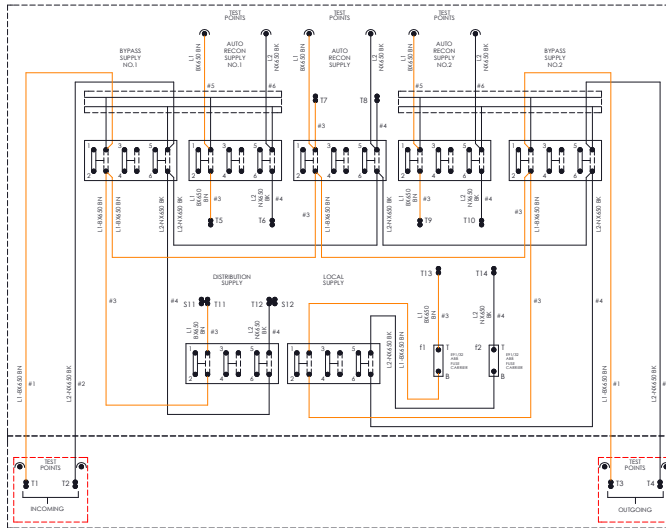
Call us on **01752 969321**

Alternately you can fill out *our online form*



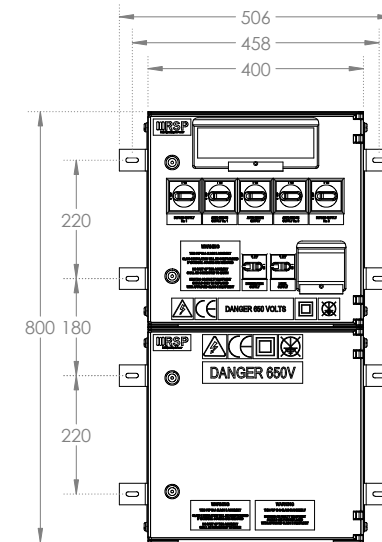
FSP03 - Type 30

FSP03 TYPE 30

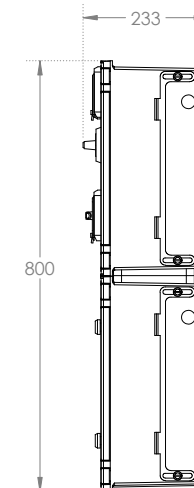
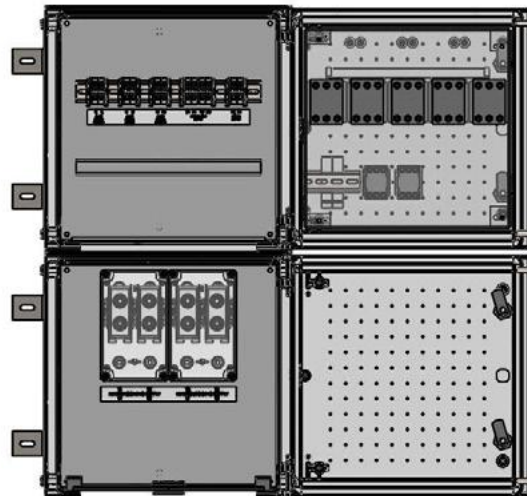


WIRING DIAGRAM

DIMENSIONING



INTERNAL VIEW



FSP03 - Type 31

FSP03 Switchgear Assembly - Type 31

- Railway Cat - No. 054/213908.
- RSP Part - No. DLLF3P31-02.
- Class II Distribution Enclosure for 650V Signalling Systems.
- FSP03 Functional Supply Module with Primary and Secondary fuses.

Key Features:

- Four Switched & Fused Output Functional Supplies.
- Easy cable installation with Magplate sliding split-able Gland Plate.
- Functional Supply Fuse Carriers IEC60269 (ABB 10x38mm).
- Compliant to Network Rail specification NR/L2/ELP/27409 Issue 2.
- Dimensions W=506mm x H=800mm x D=228mm.
- Weight = 18.75Kg.

Support

All products come with a standard 12 month warranty with an option to extend if required and a minimum 35 year life expectancy. RSP has an experienced team on hand to provide ongoing support pre, during and after sales.



Contact us to order or get more info

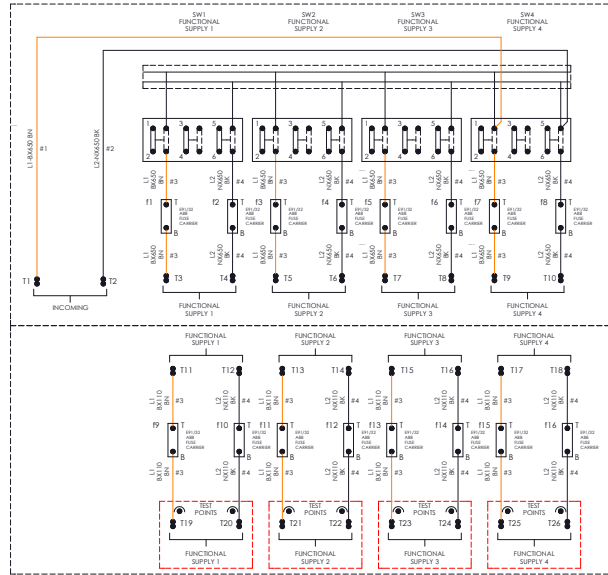
Call us on **01752 969321**

Alternately you can fill out *our online form*



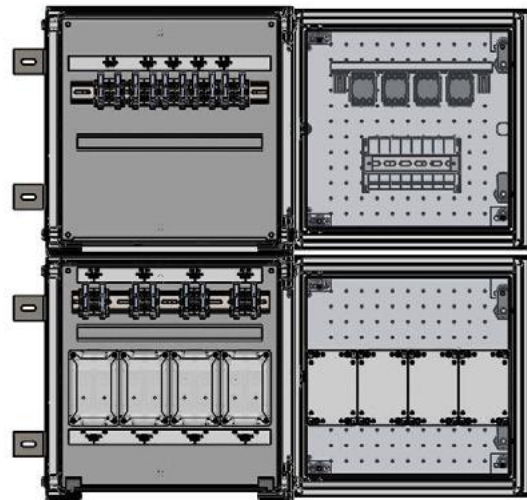
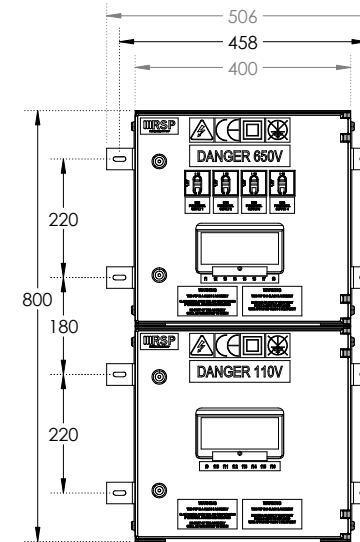
FSP03 - Type 31

FSP03 Type 31

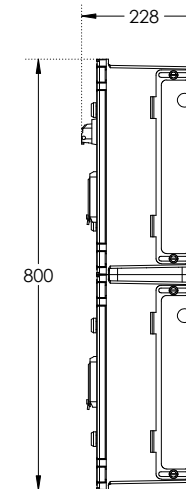


WIRING DIAGRAM

DIMENSIONS



INTERNAL VIEW



FSP03 - Type 32

FSP03 Full Width Location Case Assembly

- ❑ Railway Cat No. 054/213905.
- ❑ RSP Part No. DLLF3P32-02.
- ❑ Class II Distribution Enclosure for 650V Signalling Systems.
- ❑ Full Width Case - Optional Heater and Light available.

When ordering a complete case a **Type 30 Distribution Module** is supplied as standard as well as one other **FSP03 Functional Supply Module** which is to be specified by the client.

Key Features:

- ❑ Dedicated Ring Power IN and OUT Isolators.
- ❑ Compatible with Copper (Cu) or Aluminium (Al) 2c Feeder Cables up to 120mm².
- ❑ Easy cable installation with Magplate sliding split-able Gland Plate.
- ❑ Functional Supply Fuse Carriers IEC60269 (ABB 10x38mm).
- ❑ Compliant to Network Rail specification NR/L2/ELP/27409 Issue 2.
- ❑ Dimensions W=1022mm x H=1861mm x D=558mm.
- ❑ Weight = Dependant on final design.



Need a tailored design?

Our IRSE licensed designers can give you the bespoke solution you need. Call us on **01752 969321** or you can fill out *our online form*

FSP03 - Type 32C

FSP03 Half Width Location Case Assembly

- Railway Cat No. 054/213906.
- RSP Part No. DLLF3P32C.
- Class II Distribution Enclosure for 650V Signalling Systems.
- Half Width Case - Optional Heater and Light available.

When ordering a complete case a **Type 30 Distribution Module** is supplied as standard as well as one other **FSP03 Functional Supply Module** which is to be specified by the client.

Key Features:

- Dedicated Ring Power IN and OUT Isolators.
- Compatible with Copper (Cu) or Aluminium (Al) 2c Feeder Cables up to 120mm².
- Easy cable installation with Magplate sliding split-able Gland Plate.
- Functional Supply Fuse Carriers IEC60269 (ABB 10x38mm).
- Compliant to Network Rail specification NR/L2/ELP/27409 Issue 2.
- Dimensions W=588mm x H=1861mm x D=558mm.
- Weight = Dependant on final design.



Need a tailored design?

Our IRSE licensed designers can give you the bespoke solution you need. Call us on **01752 969321** or you can fill out *our online form*

FSP03 - Type 33

FSP03 Switchgear Assembly - Type 33

- ❑ Railway Cat - No. 054/213909.
- ❑ RSP Part - No. DLLF3P33-02.
- ❑ Class II Distribution Enclosure for 650V Signalling Systems.
- ❑ FSP03 Functional Supply Module.

Key Features:

- ❑ Four Switched & Fused Output Functional Supplies.
- ❑ Easy cable installation with Magplate sliding split-able Gland Plate.
- ❑ Functional Supply Fuse Carriers IEC60269 (ABB 10x38mm).
- ❑ Compliant to Network Rail specification NR/L2/ELP/27409 Issue 2.
- ❑ Dimensions W=506mm x H=800mm x D=228mm.
- ❑ Weight = 18.75Kg.

Support

All products come with a standard 12 month warranty with an option to extend if required and a minimum 35 year life expectancy. RSP has an experienced team on hand to provide ongoing support pre, during and after sales.



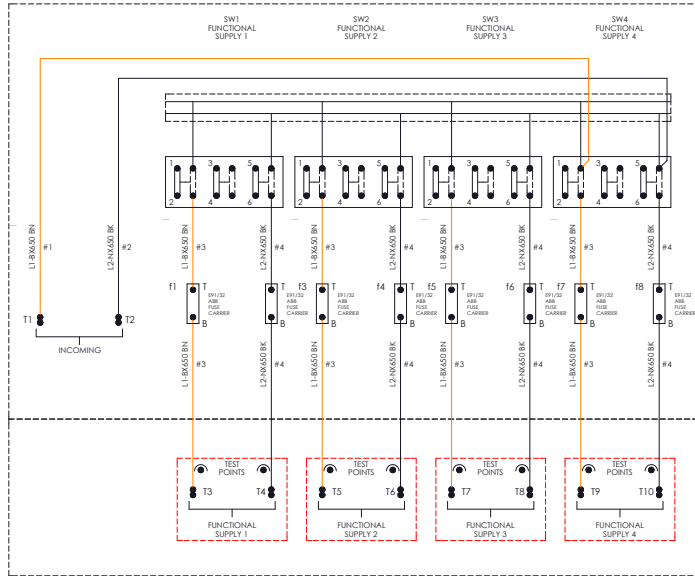
Need a tailored design?

Our IRSE licensed designers can give you the bespoke solution you need. Call us on **01752 969321** or you can fill out *our online form*

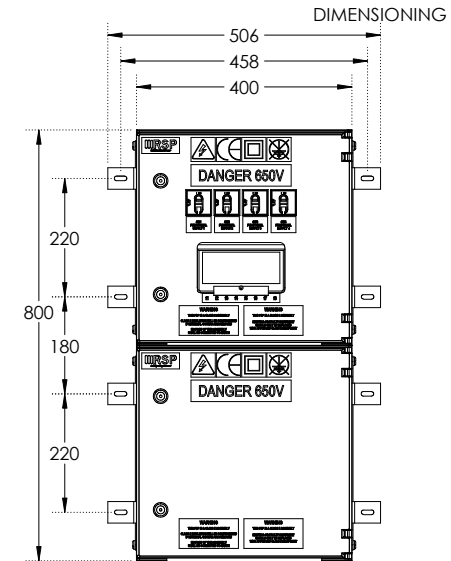


FSP03 - Type 33

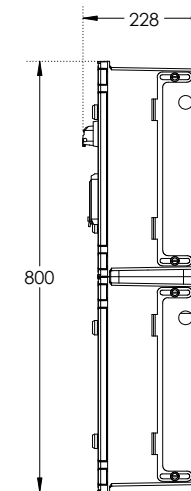
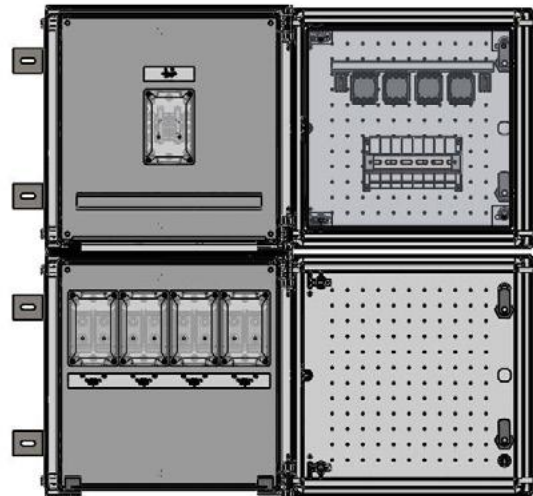
FSP03 Type 33



WIRING DIAGRAM



INTERNAL VIEW





FSP03 - Type 34

FSP03 Switchgear Assembly - Type 34

- Railway Cat - No. 054/213910.
- RSP Part - No. DLLF3P34-02.
- Class II Distribution Enclosure for 650V Signalling Systems.
- FSP03 Functional Supply Module with Primary and Secondary fuses.

Key Features:

- Two Switched and Fused Output Functional Supplies.
- Easy cable installation with Magplate sliding split-able Gland Plate.
- Functional Supply Fuse Carriers IEC60269 (ABB 10x38mm).
- Compliant to Network Rail specification NR/L2/ELP/27409 Issue 2.
- Dimensions W=506mm x H=800mm x D=228mm.
- Weight = 18.75Kg.

Support

All products come with a standard 12 month warranty with an option to extend if required and a minimum 35 year life expectancy. RSP has an experienced team on hand to provide ongoing support pre, during and after sales.



Contact us to order or get more info

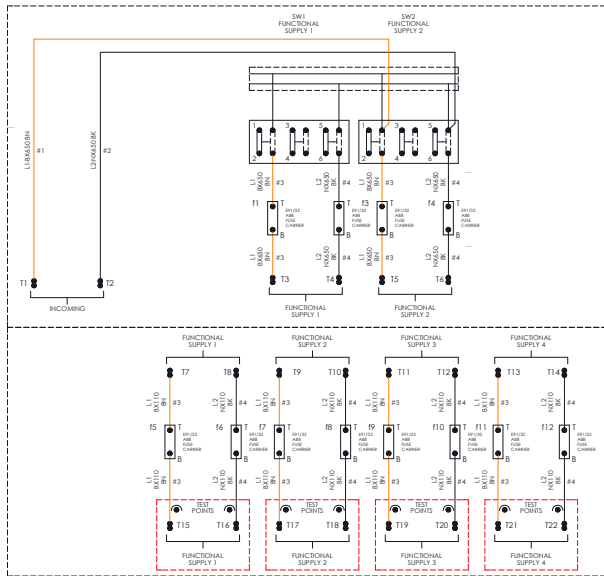
Call us on **01752 969321**

Alternately you can fill out *our online form*



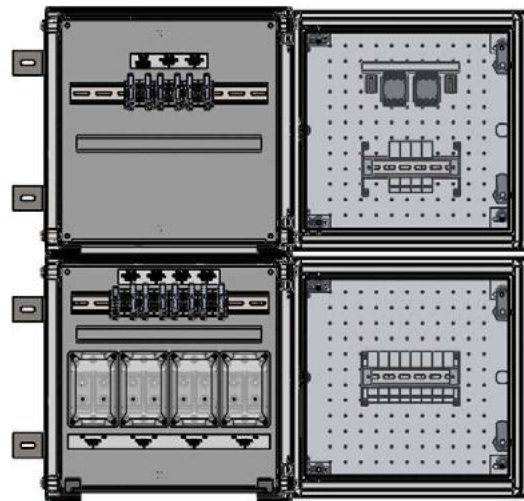
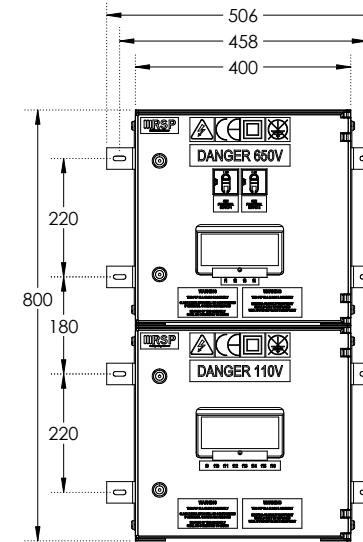
FSP03 - Type 34

FSP03 TYPE 34

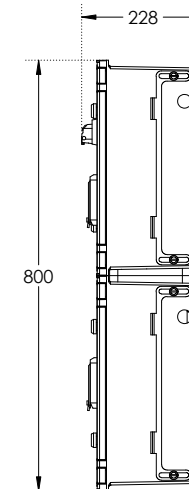


WIRING DIAGRAM

DIMENSIONING



INTERNAL VIEW



FSP03 - Type 35

FSP03 Switchgear Assembly - Type 35

- Railway Cat - No. 054/213911.
- RSP Part - No. DLLF3P35-02.
- Class II Distribution Enclosure for 650V Signalling Systems.
- FSP03 Functional Supply Module.

Key Features:

- Two Switched and Fused Output Functional Supplies.
- Easy cable installation with Magplate sliding split-able Gland Plate.
- Functional Supply Fuse Carriers IEC60269 (ABB 10x38mm).
- Compliant to Network Rail specification NR/L2/ELP/27409 Issue 2.
- Dimensions W=506mm x H=800mm x D=228mm.
- Weight = 18.75Kg.

Support

All products come with a standard 12 month warranty with an option to extend if required and a minimum 35 year life expectancy. RSP has an experienced team on hand to provide ongoing support pre, during and after sales.



Contact us to order or get more info

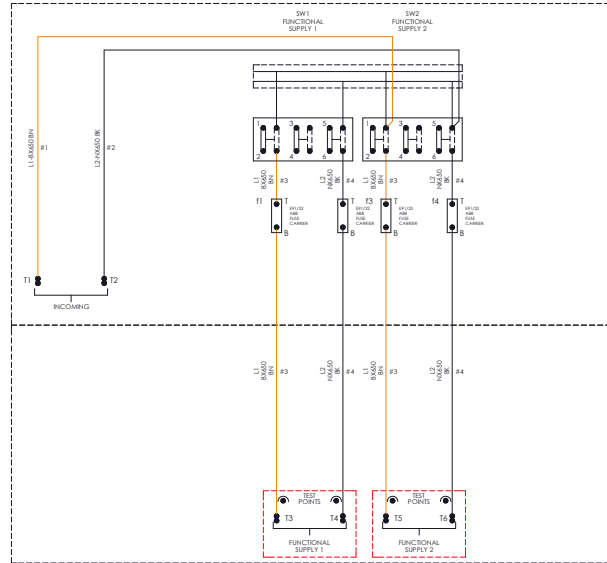
Call us on **01752 969321**

Alternately you can fill out *our online form*



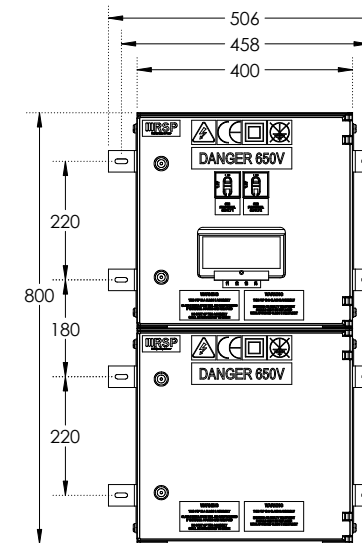
FSP03 - Type 35

FSP04 Type 35

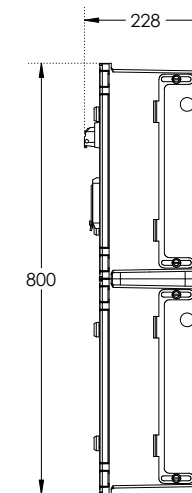
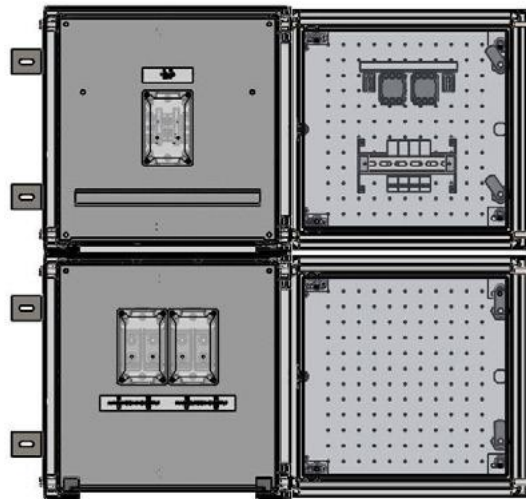


WIRING DIAGRAM

DIMENSIONING



INTERNAL VIEW



FSP03 - Type 36

FSP03 Switchgear Assembly - Type 36

- Railway Cat - No. 054/213912.
- RSP Part - No. DLLF3P36-02.
- Class II Distribution Enclosure for 650V Signalling Systems.
- FSP03 Functional Supply Module including termination facility for one spur supply.

Key Features:

- Two Switched and Fused Output Functional Supplies.
- Easy cable installation with Magplate sliding split-able Gland Plate.
- Functional Supply Fuse Carriers IEC60269 (ABB 10x38mm).
- Compliant to Network Rail specification NR/L2/ELP/27409 Issue 2.
- Dimensions W=506mm x H=400mm x D=233mm.
- Weight = 13.50Kg.

Support

All products come with a standard 12 month warranty with an option to extend if required and a minimum 35 year life expectancy. RSP has an experienced team on hand to provide ongoing support pre, during and after sales.



Contact us to order or get more info

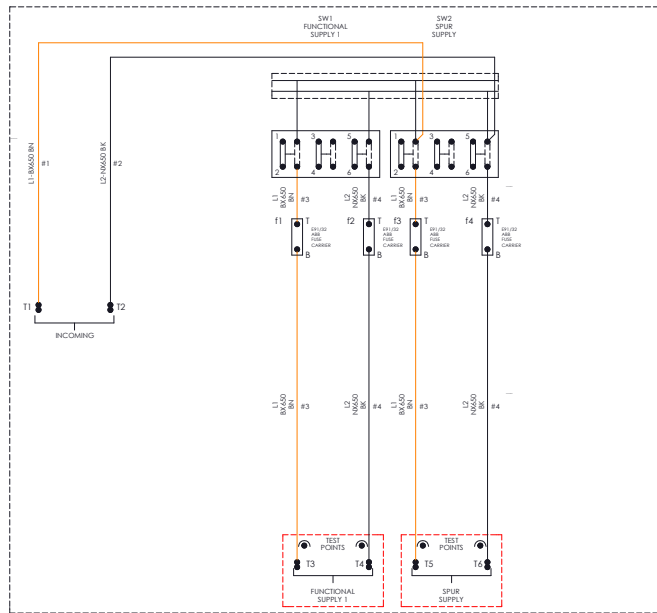
Call us on **01752 969321**

Alternately you can fill out *our online form*



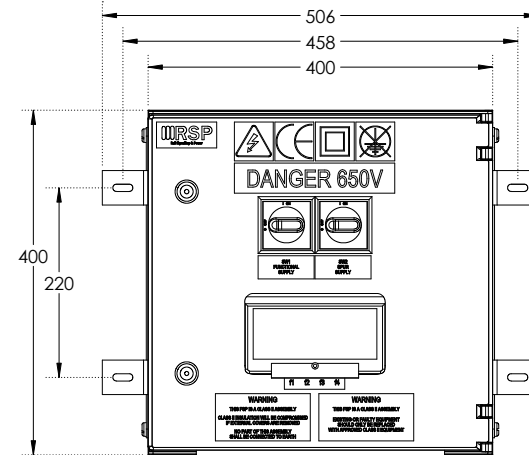
FSP03 - Type 36

FSP03 Type 36

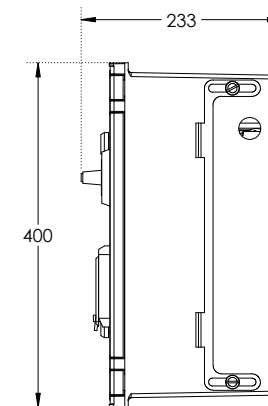
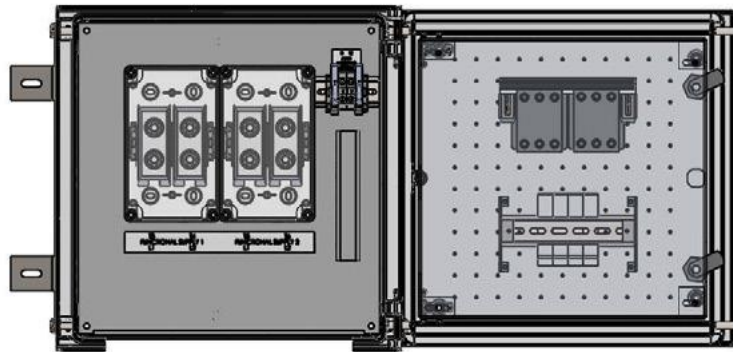


WIRING DIAGRAM

DIMENSIONING



INTERNAL VIEW



FSP03 - Type 37

FSP03 Switchgear Assembly - Type 37

- Railway Cat No. 054/213913.
- RSP Part No. DLLF3P37-02.
- Class II Distribution Enclosure for 650V Signalling Systems.
- FSP03 Functional Supply Module.

Key Features:

- Four Switched & Fused Output Functional Supplies.
- Easy cable installation with Magplate sliding split-able Gland Plate.
- Functional Supply Fuse Carriers IEC60269 (ABB 10x38mm).
- Compliant to Network Rail specification NR/L2/ELP/27409 Issue 2.
- Dimensions W=506mm x H=400mm x D=228mm.
- Weight = 13.50Kg.

Support

All products come with a standard 12 month warranty with an option to extend if required and a minimum 35 year life expectancy. RSP has an experienced team on hand to provide ongoing support pre, during and after sales.



Contact us to order or get more info

Call us on **01752 969321**

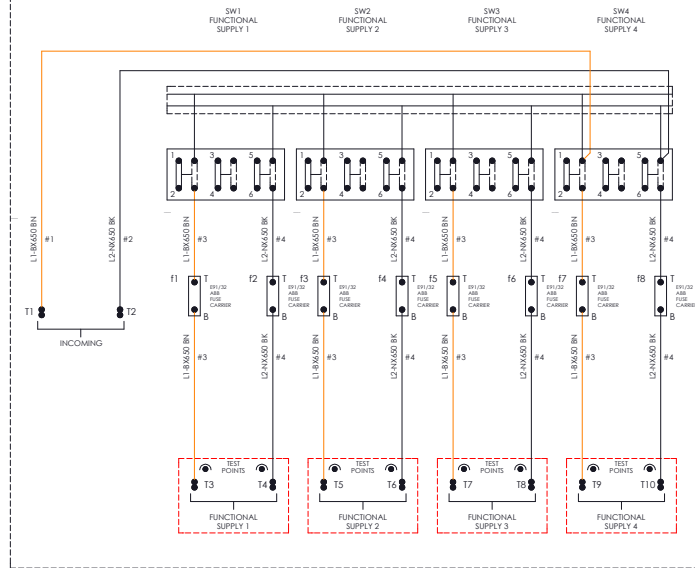
Alternately you can fill out *our online form*



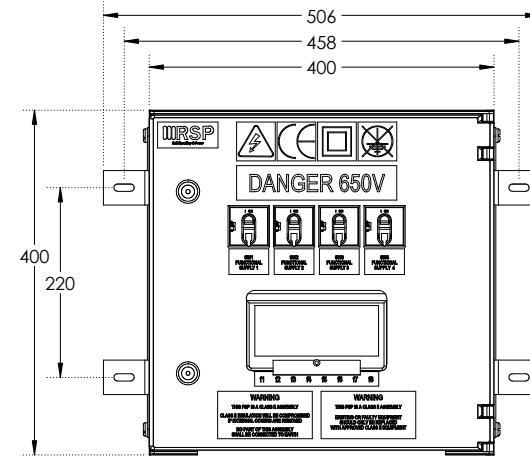
FSP03 - Type 37

FSP03 Type 37

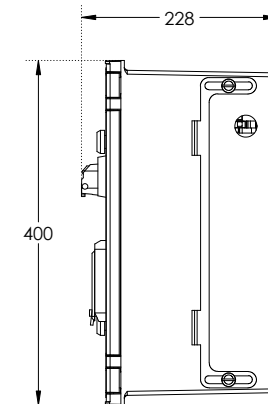
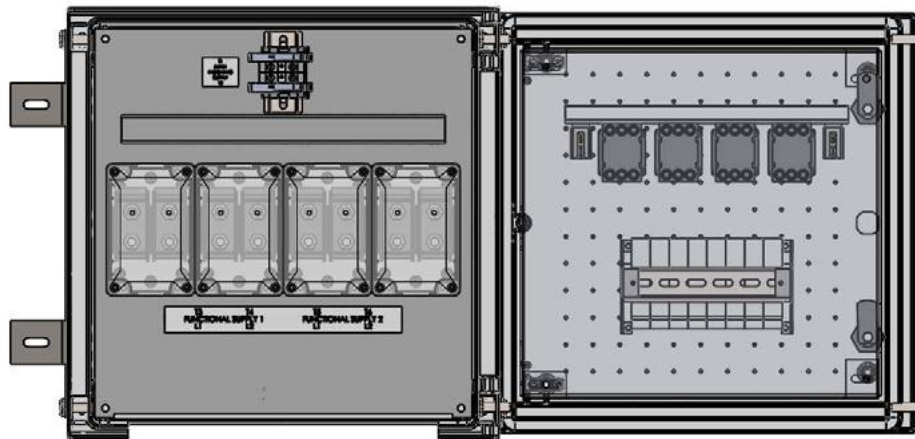
WIRING DIAGRAM



DIMENSIONING



INTERNAL VIEW



FSP03 - Type 32SM

FSP03 Switchgear Assembly - Type 32SM

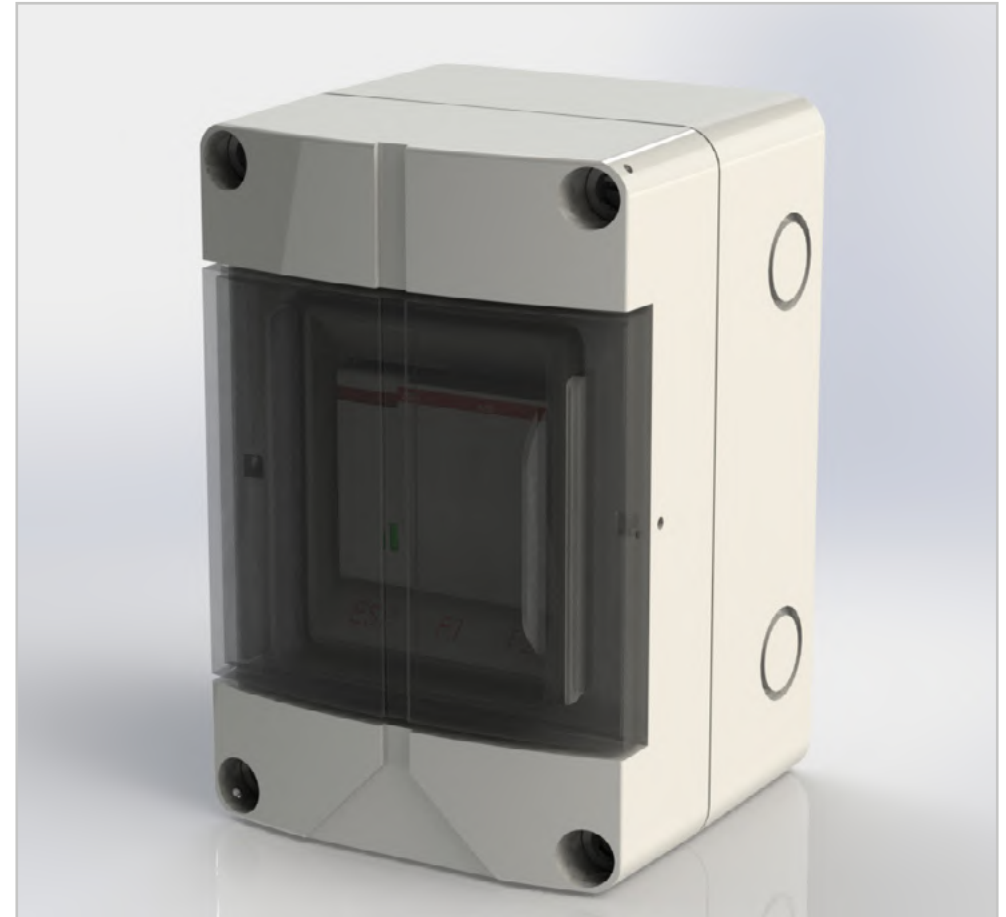
- ❑ Railway Cat No. 054/213914.
- ❑ RSP Part No. DLLF3P32SM.
- ❑ Class II Distribution Enclosure for 650V Signalling Systems.
- ❑ A single surge suppressor in its own housing.

Key Features:

- ❑ Dedicated Surge Arrestor Module.
- ❑ Functional Supply Fuse Carriers IEC60269 (ABB 10x38mm).
- ❑ Compliant to Network Rail specification NR/L2/ELP/27409 Issue 2.
- ❑ Dimensions W=100mm x H=150mm x D=99mm.
- ❑ Weight = 1Kg.

Support

All products come with a standard 12 month warranty with an option to extend if required and a minimum 35 year life expectancy. RSP has an experienced team on hand to provide ongoing support pre, during and after sales.



Contact us to order or get more info

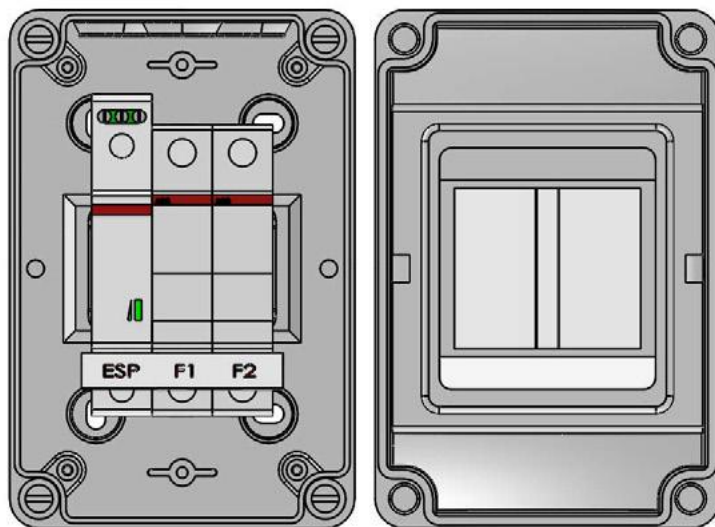
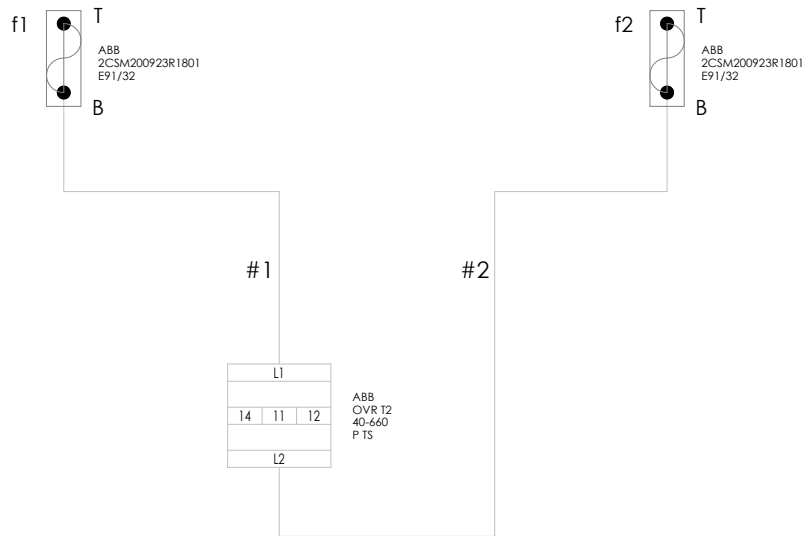
Call us on **01752 969321**

Alternately you can fill out *our online form*

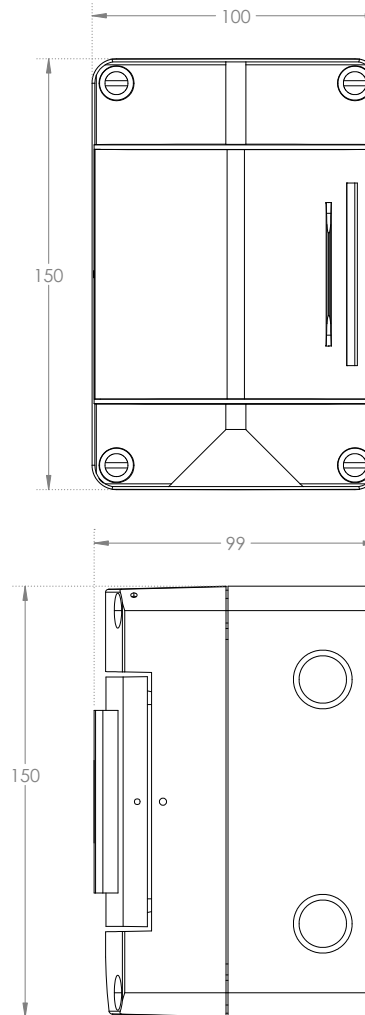


FSP03 - Type 32SM

FSP03 Type 32 SM



DIMENSIONING





FSP04

- Network Rail Product Acceptance Certificate PA05/07058.
- Compliant to NR/L2/SIGELP27409 Issue 2.
- All FSP04s come fitted with RSP's unique removable and split-able gland plates.
- Suitable for SIN119 Legacy Installation upgrades.

	FSP04 Type 01 DLLF4P01	FSP04 Type 02 DLLF4P02	FSP04 Type 03 DLLF4P03 DLLF2P20-02	FSP04 Type 04 DLLF4P04 DLLF2P21-02	FSP04 Type 05 DLLF4P05 DLLF2P22-02	FSP04 Type 06 DLLF4P06	FSP04 Type 07 DLLF4P07	FSP04 Type 08 DLLF4P08	FSP04 Type 09 DLLF4P09	FSP04 Type 10 DLLF4P10
Class	II	II	II	II	II	II	II	II	II	II
Feeder Switches	1	1	1	1	2	2	1	1	2	2
Functional Supplies	1	1	1	1	1	1	2	2	2	2
Feeder Cable Size (Cu or Al)	6-50mm ²	6-50mm ²	16-120mm ²	16-120mm ²	16-120mm ²	16-120mm ²	16-120mm ²	16-120mm ²	16-120mm ²	16-120mm ²
Type of Fuses	IEC	BS88	IEC	BS88	IEC	BS88	IEC	BS88	IEC	BS88
Dimensions (mm)	W=300 H=200 D=224	W=300 H=200 D=224	W=300 H=300 D=224	W=300 H=300 D=224	W=300 H=300 D=224	W=300 H=300 D=224	W=400 H=300 D=221	W=400 H=300 D=221	W=400 H=300 D=221	W=400 H=300 D=221
Weight	5Kg	5Kg	6Kg	6Kg	6Kg	6Kg	7.5Kg	7.5Kg	7.5Kg	7.5Kg
Railway Cat No.	092/002324	092/002325	092/002326	092/002327	092/002328	092/002329	092/002330	092/002331	092/002332	092/002333
Additional Comments									Functional supplies share a common fuse	Functional supplies share a common fuse

FSP04 - Type 01

FSP04 Switchgear Assembly - Type 01

- Railway Cat No. 092/002324.
- RSP Part No. DLLF4P01.
- Class II Distribution Enclosure for 650V Signalling Systems.

Key Features:

- Combined Ring Power IN/OUT Isolator.
- Compatible with Copper (Cu) or Aluminium (Al) Feeder Cables from 6-50mm².
- One Switched and Fused Output Functional Supply.
- Functional Supply Fuse Carriers IEC60269 (ABB 10x38mm).
- Compliant to Network Rail specification NR/L2/ELP/27409 Issue 2.
- Dimensions W=300mm x H=200mm x D=224mm.
- Weight = 5Kg.

Support

All products come with a standard 12 month warranty with an option to extend if required and a minimum 35 year life expectancy. RSP has an experienced team on hand to provide ongoing support pre, during and after sales.



Need a tailored design?

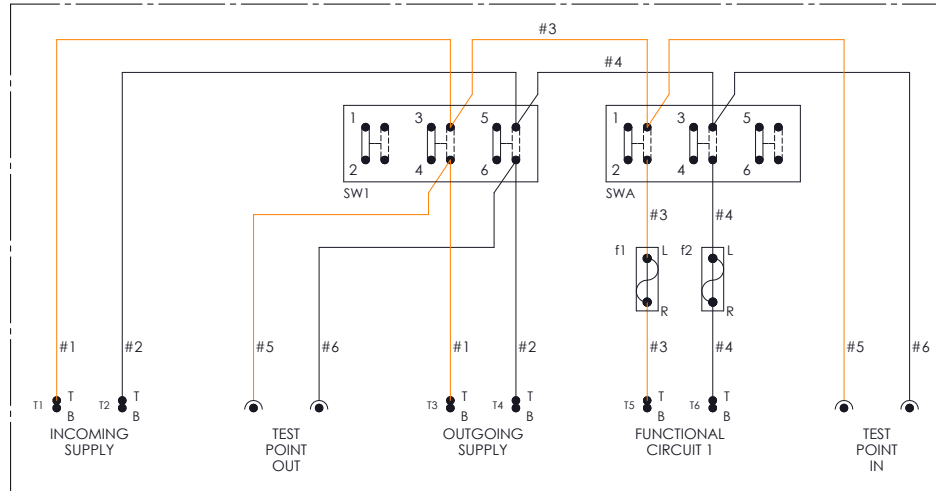
Our IRSE licensed designers can give you the bespoke solution you need. Call us on **01752 969321** or you can fill out *our online form*



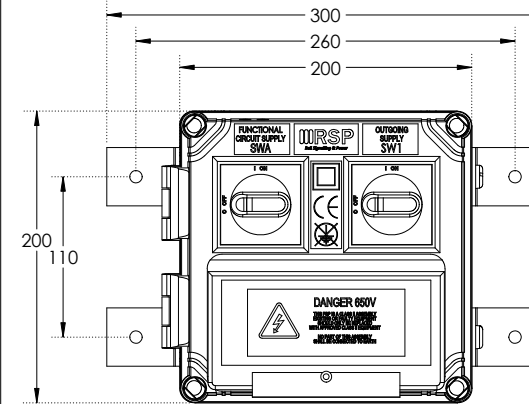
FSP04 - Type 01

FSP04 Type 01

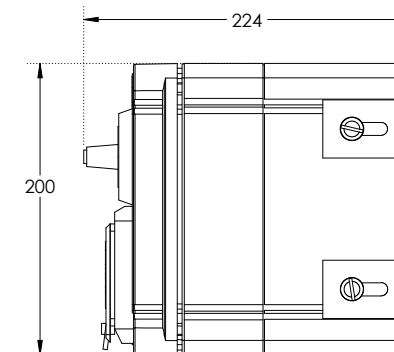
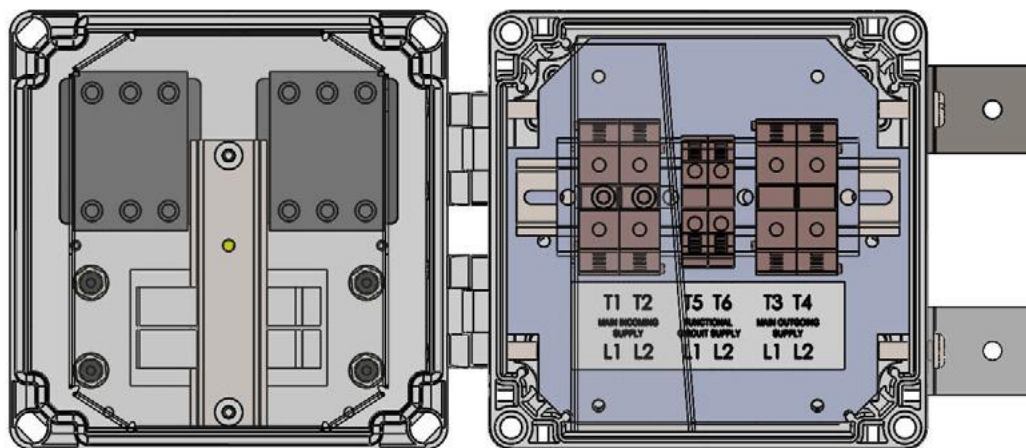
WIRING DIAGRAM



DIMENSIONING



INTERNAL VIEW



FSP04 - Type 02

FSP04 Switchgear Assembly - Type 02

- Railway Cat No. 092/002325.
- RSP Part No. DLLF4P02.
- Class II Distribution Enclosure for 650V Signalling Systems.

Key Features:

- Combined Ring Power IN/OUT Isolator.
- Compatible with Copper (Cu) or Aluminium (Al) Feeder Cables from 6-50mm².
- One Switched and Fused Output Functional Supply.
- Functional Supply Fuse Carriers BS88.
- Compliant to Network Rail specification NR/L2/ELP/27409 Issue 2.
- Dimensions W=300mm x H=200mm x D=224mm.
- Weight = 5Kg.

Support

All products come with a standard 12 month warranty with an option to extend if required and a minimum 35 year life expectancy. RSP has an experienced team on hand to provide ongoing support pre, during and after sales.



Contact us to order or get more info

Call us on **01752 969321**

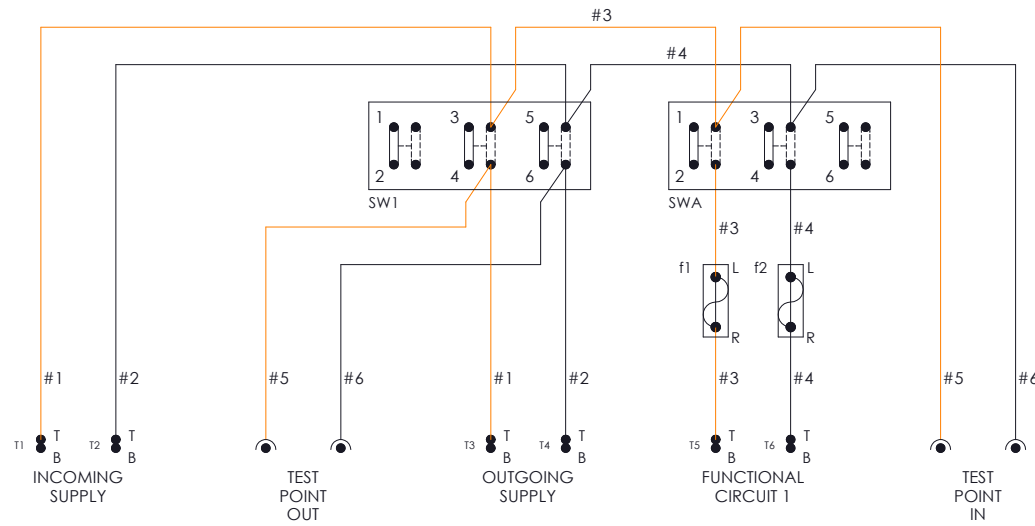
Alternately you can fill out *our online form*



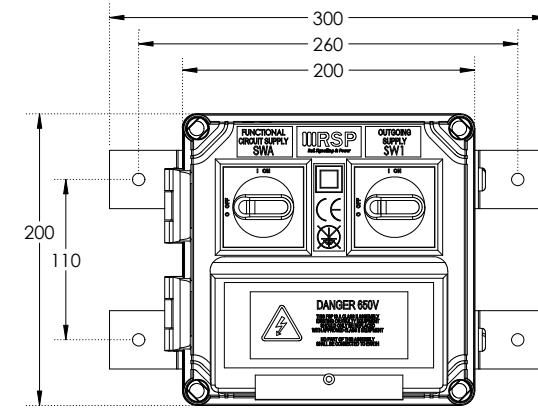
FSP04 - Type 02

FSP04 Type 02

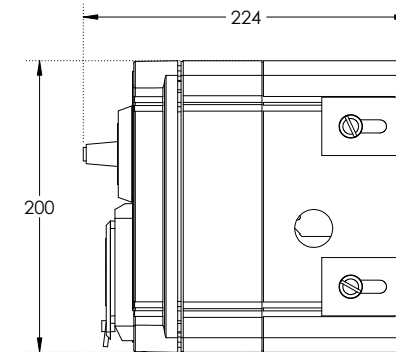
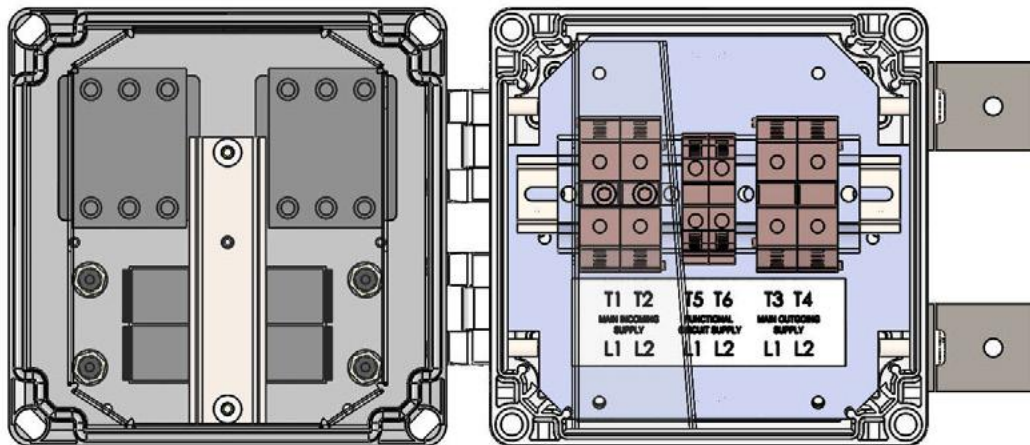
WIRING DIAGRAM



DIMENSIONING



INTERNAL VIEW



FSP04 - Type 03

FSP04 Switchgear Assembly - Type 03

- Railway Cat No. 092/002326.
- RSP Part No. DLLF4P03.
- Class II Distribution Enclosure for 650V Signalling Systems.

Key Features:

- Combined Ring Power IN/OUT Isolator.
- Compatible with Copper (Cu) or Aluminium (Al) Feeder Cables from 16-120mm².
- One Switched and Fused Output Functional Supply.
- Functional Supply Fuse Carriers IEC60269 (ABB 10x38mm).
- Compliant to Network Rail specification NR/L2/ELP/27409 Issue 2.
- Dimensions W=300mm x H=300mm x D=224mm.
- Weight = 6Kg.

Support

All products come with a standard 12 month warranty with an option to extend if required and a minimum 35 year life expectancy. RSP has an experienced team on hand to provide ongoing support pre, during and after sales.



Contact us to order or get more info

Call us on **01752 969321**

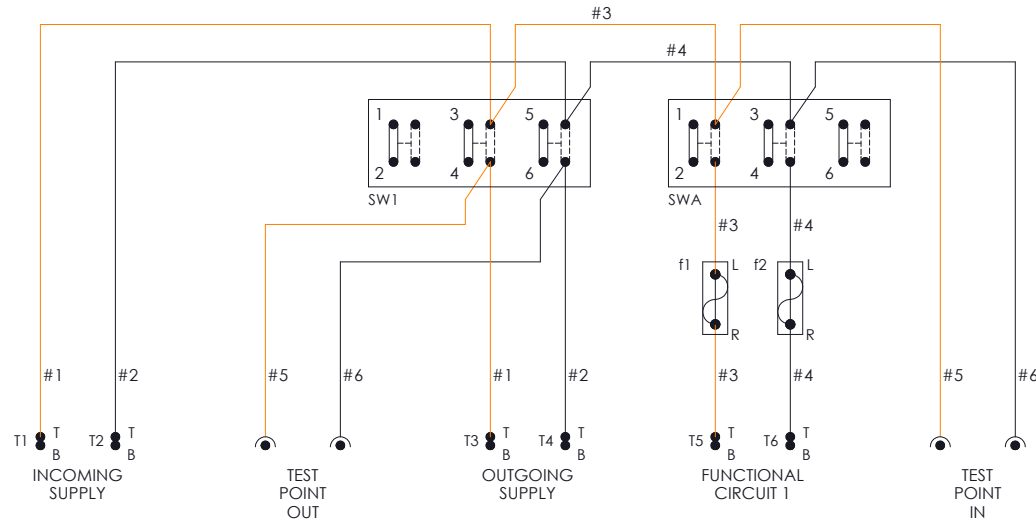
Alternately you can fill out *our online form*



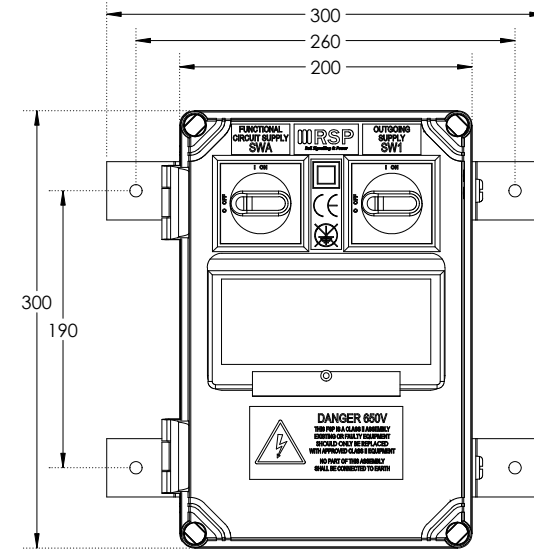
FSP04 - Type 03

FSP04 Type 03

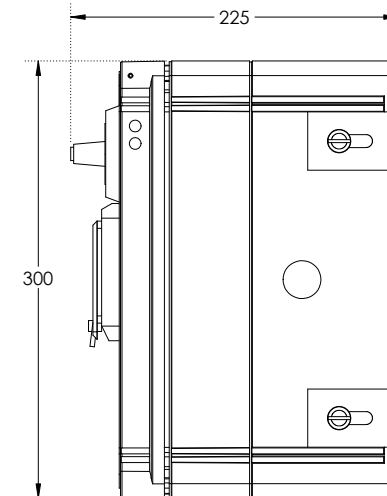
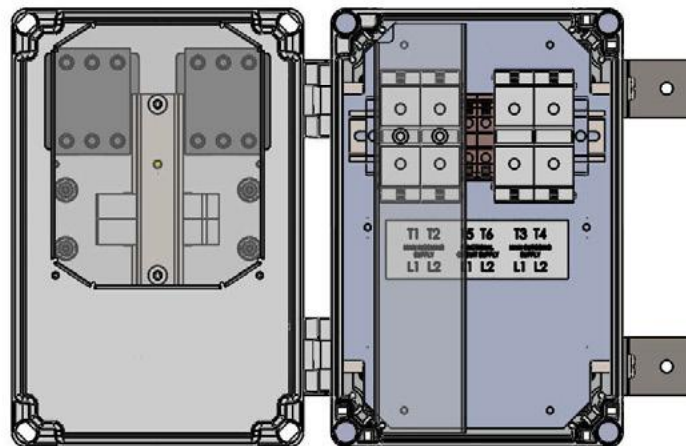
WIRING DIAGRAM



DIMENSIONING



INTERNAL VIEW



FSP04 - Type 04

FSP04 Switchgear Assembly - Type 04

- Railway Cat No. 092/002327.
- RSP Part No. DLLF4P04.
- Class II Distribution Enclosure for 650V Signalling Systems.

Key Features:

- Combined Ring Power IN/OUT Isolator.
- Compatible with Copper (Cu) or Aluminium (Al) Feeder Cables from 16-120mm².
- One Switched and Fused Output Functional Supply.
- Functional Supply Fuse Carriers BS88.
- Compliant to Network Rail specification NR/L2/ELP/27409 Issue 2.
- Dimensions W=300mm x H=300mm x D=224mm.
- Weight = 6Kg.

Support

All products come with a standard 12 month warranty with an option to extend if required and a minimum 35 year life expectancy. RSP has an experienced team on hand to provide ongoing support pre, during and after sales.



Contact us to order or get more info

Call us on **01752 969321**

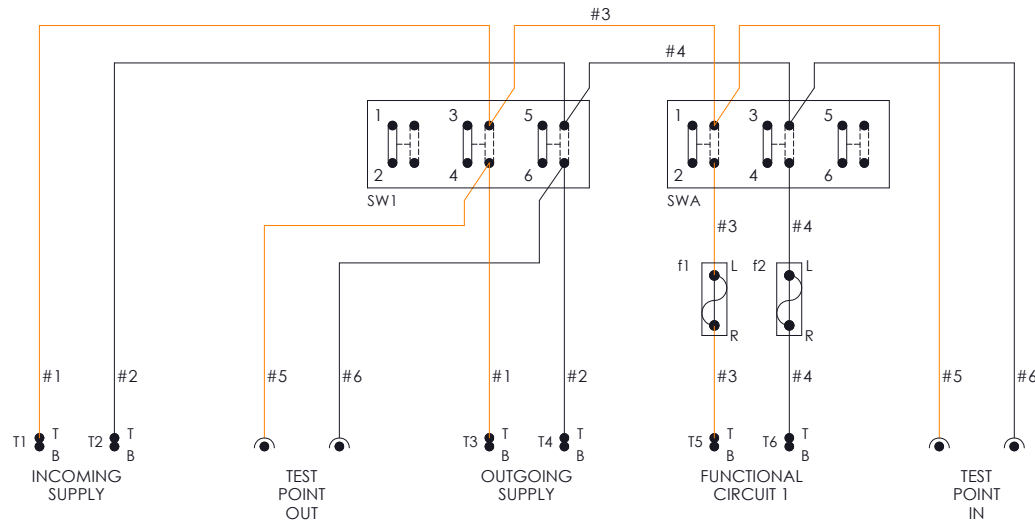
Alternately you can fill out *our online form*



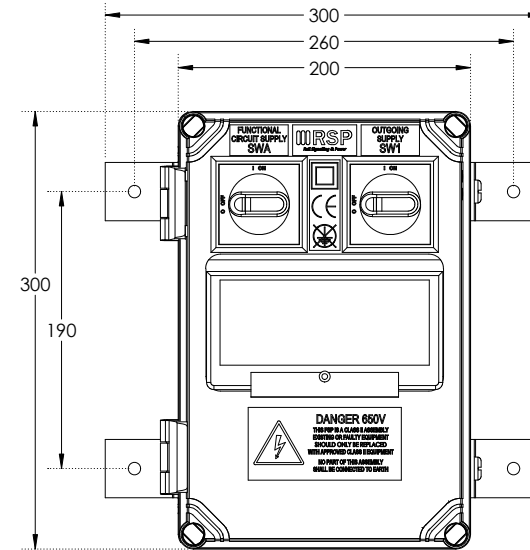
FSP04 - Type 04

FSP04 Type 04

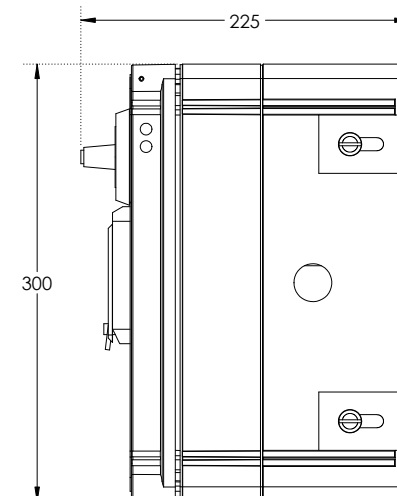
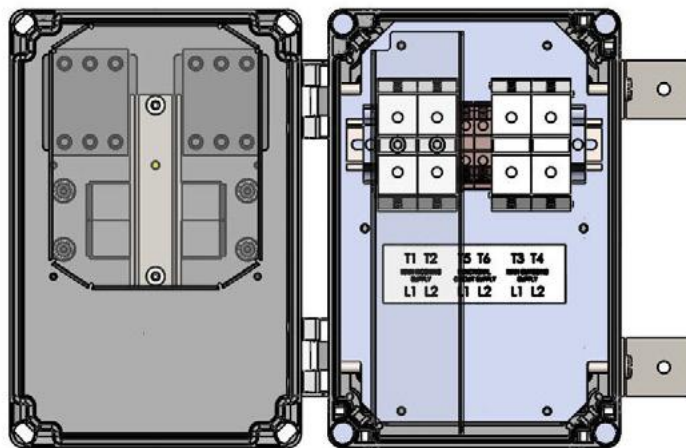
WIRING DIAGRAM



DIMENSIONING



INTERNAL VIEW



FSP04 - Type 05

FSP04 Switchgear Assembly - Type 05

- Railway Cat No. 092/002328.
- RSP Part No. DLLF4P05.
- Class II Distribution Enclosure for 650V Signalling Systems.

Key Features:

- Dedicated Ring Power IN and OUT Isolators.
- Compatible with Copper (Cu) or Aluminium (Al) Feeder Cables from 16-120mm².
- One Switched and Fused Output Functional Supply.
- Functional Supply Fuse Carriers IEC60269 (ABB 10x38mm).
- Compliant to Network Rail specification NR/L2/ELP/27409 Issue 2.
- Dimensions W=300mm x H=300mm x D=224mm.
- Weight = 6Kg.

Support

All products come with a standard 12 month warranty with an option to extend if required and a minimum 35 year life expectancy. RSP has an experienced team on hand to provide ongoing support pre, during and after sales.



Contact us to order or get more info

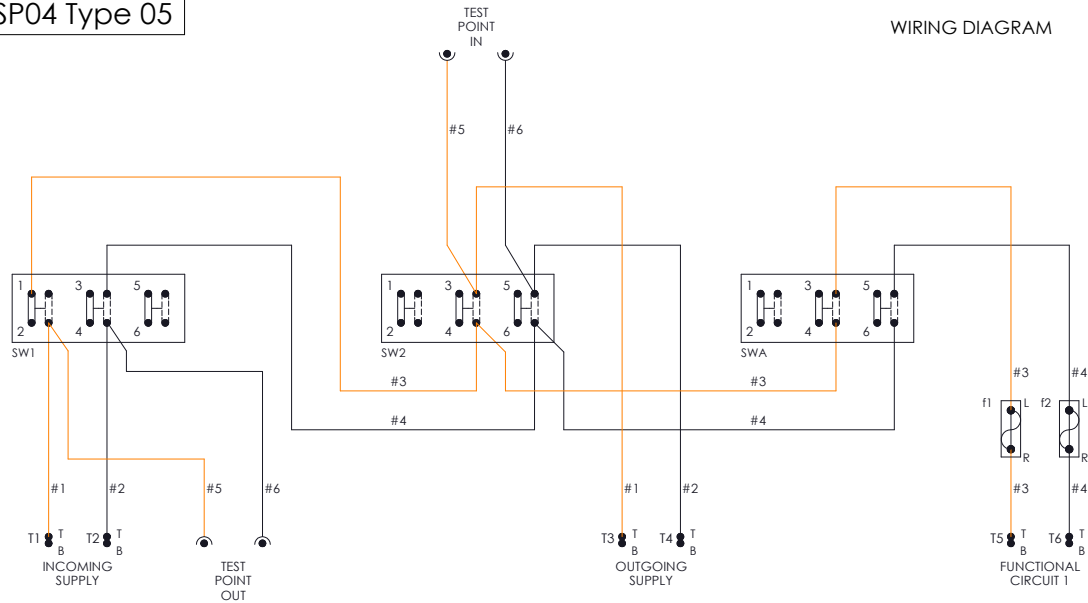
Call us on **01752 969321**

Alternately you can fill out *our online form*

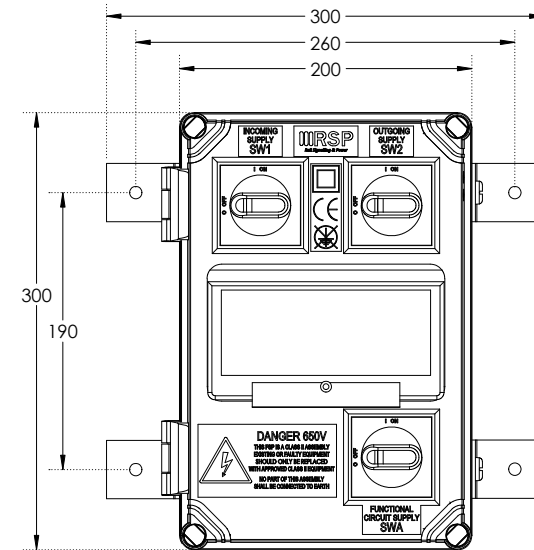


FSP04 - Type 05

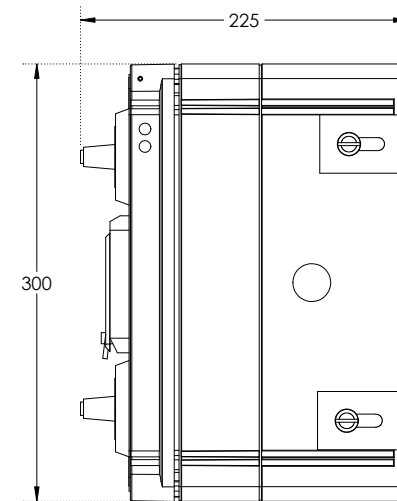
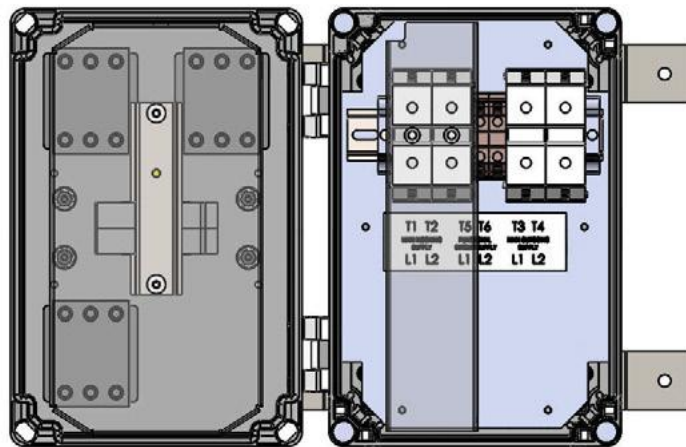
FSP04 Type 05



DIMENSIONING



INTERNAL VIEW



FSP04 - Type 06

FSP04 Switchgear Assembly - Type 06

- ❑ Railway Cat No. 092/002329.
- ❑ RSP Part No. DLLF4P06.
- ❑ Class II Distribution Enclosure for 650V Signalling Systems.

Key Features:

- ❑ Dedicated Ring Power IN and OUT Isolators.
- ❑ Compatible with Copper (Cu) or Aluminium (Al) Feeder Cables from 16-120mm².
- ❑ One Switched and Fused Output Functional Supply.
- ❑ Functional Supply Fuse Carriers BS88.
- ❑ Compliant to Network Rail specification NR/L2/ELP/27409 Issue 2.
- ❑ Dimensions W=300mm x H=300mm x D=224mm.
- ❑ Weight = 6Kg.

Support

All products come with a standard 12 month warranty with an option to extend if required and a minimum 35 year life expectancy. RSP has an experienced team on hand to provide ongoing support pre, during and after sales.



Contact us to order or get more info

Call us on **01752 969321**

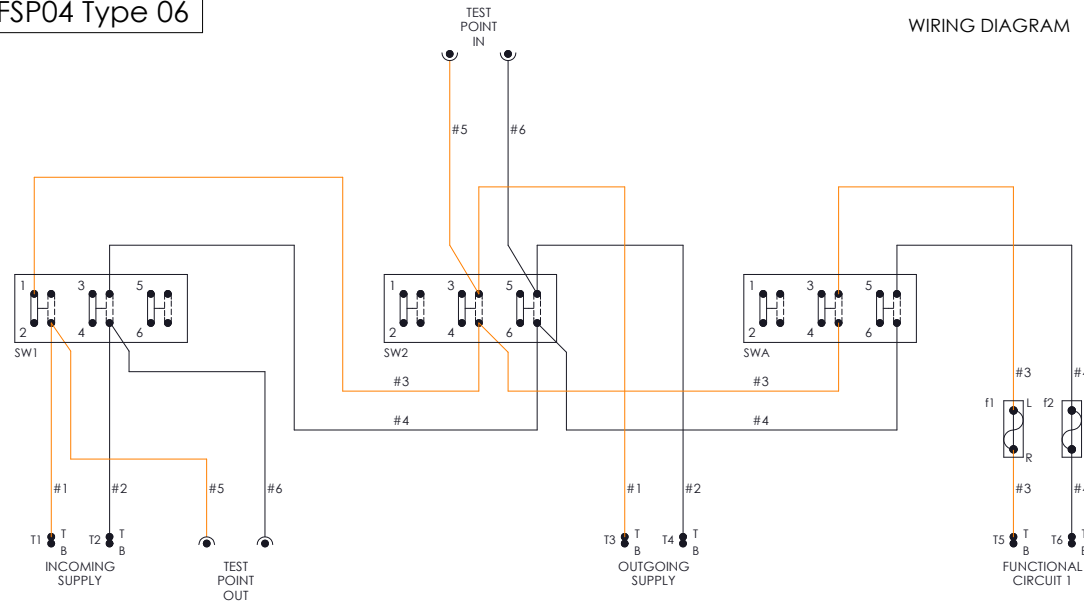
Alternately you can fill out *our online form*



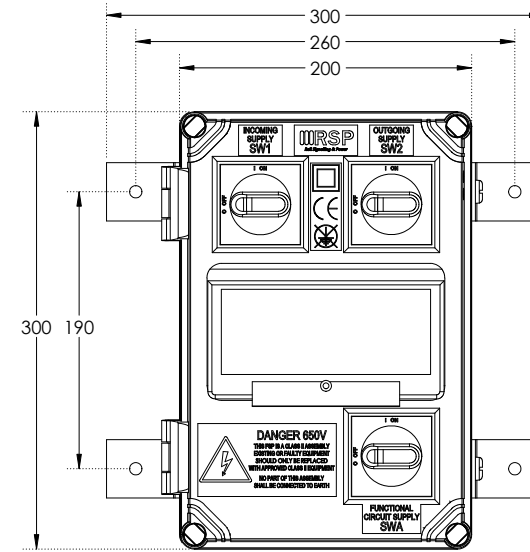
FSP04 - Type 06

FSP04 Type 06

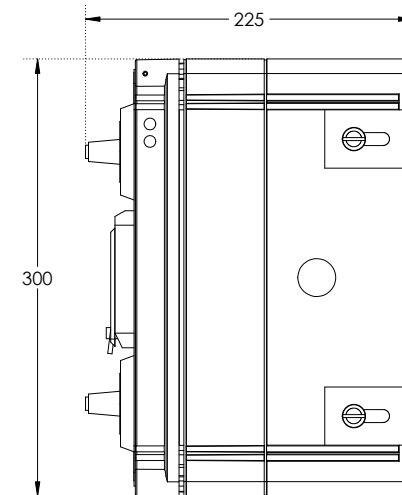
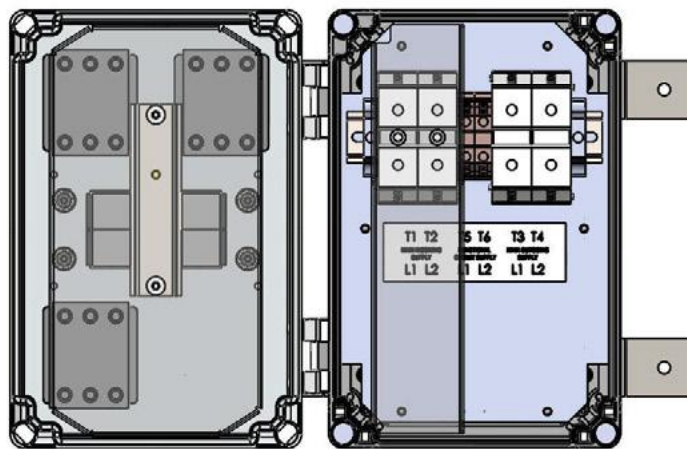
WIRING DIAGRAM



DIMENSIONING



INTERNAL VIEW



FSP04 - Type 07

FSP04 Switchgear Assembly - Type 07

- Railway Cat No. 092/002330.
- RSP Part No. DLLF4P07.
- Class II Distribution Enclosure for 650V Signalling Systems.

Key Features:

- Combined Ring Power IN/OUT Isolator.
- Compatible with Copper (Cu) or Aluminium (Al) Feeder Cables from 16-120mm².
- Two Switched & Fused Output Functional Supplies.
- Functional Supply Fuse Carriers IEC60269 (ABB 10x38mm).
- Compliant to Network Rail specification NR/L2/ELP/27409 Issue 2.
- Dimensions W=400mm x H=300mm x D=221mm.
- Weight = 7.5Kg.

Support

All products come with a standard 12 month warranty with an option to extend if required and a minimum 35 year life expectancy. RSP has an experienced team on hand to provide ongoing support pre, during and after sales.



Contact us to order or get more info

Call us on **01752 969321**

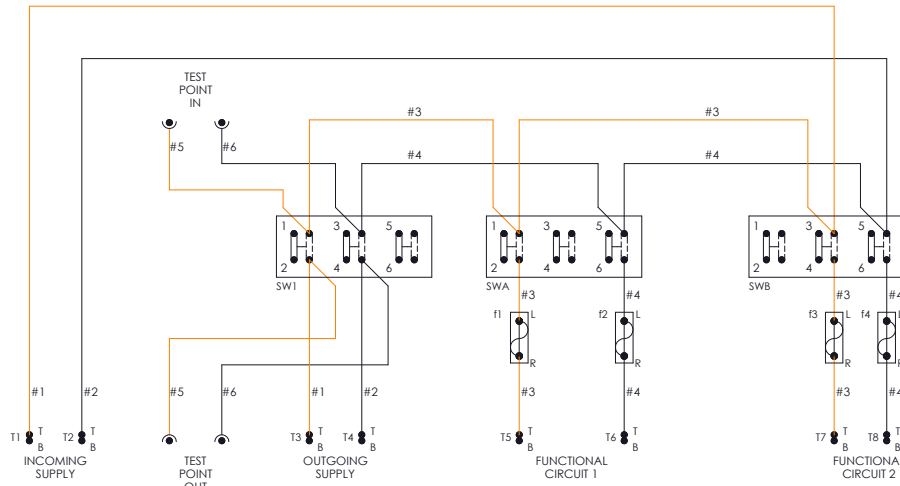
Alternately you can fill out *our online form*



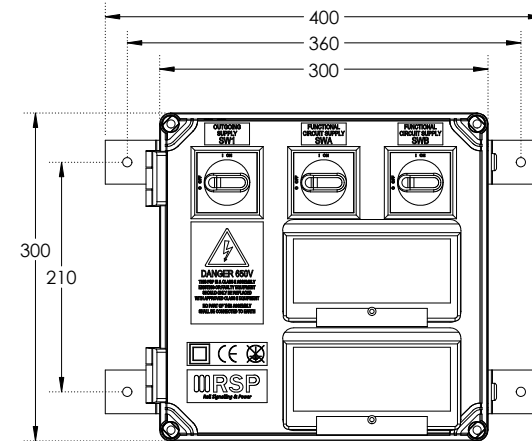
FSP04 - Type 07

FSP04 Type 07

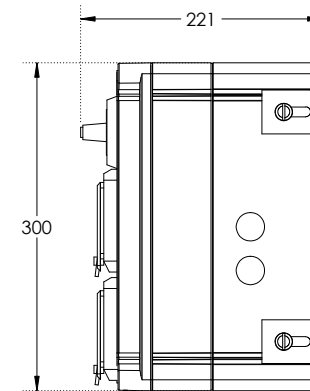
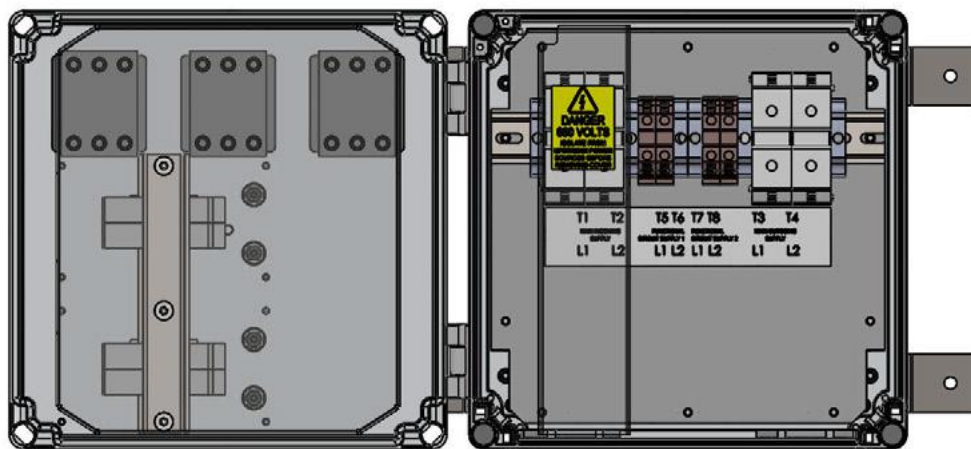
WIRING DIAGRAM



DIMENSIONING



INTERNAL VIEW



FSP04 - Type 08

FSP04 Switchgear Assembly - Type 08

- ❑ Railway Cat No. 092/002331.
- ❑ RSP Part No. DLLF4P0.
- ❑ Class II Distribution Enclosure for 650V Signalling Systems.

Key Features:

- ❑ Combined Ring Power IN/OUT Isolator.
- ❑ Compatible with Copper (Cu) or Aluminium (Al) Feeder Cables from 16-120mm².
- ❑ Two Switched & Fused Output Functional Supplies.
- ❑ Functional Supply Fuse Carriers BS88.
- ❑ Compliant to Network Rail specification NR/L2/ELP/27409 Issue 2.
- ❑ Dimensions W=400mm x H=300mm x D=221mm.
- ❑ Weight = 7.5Kg.

Support

All products come with a standard 12 month warranty with an option to extend if required and a minimum 35 year life expectancy. RSP has an experienced team on hand to provide ongoing support pre, during and after sales.



Contact us to order or get more info

Call us on **01752 969321**

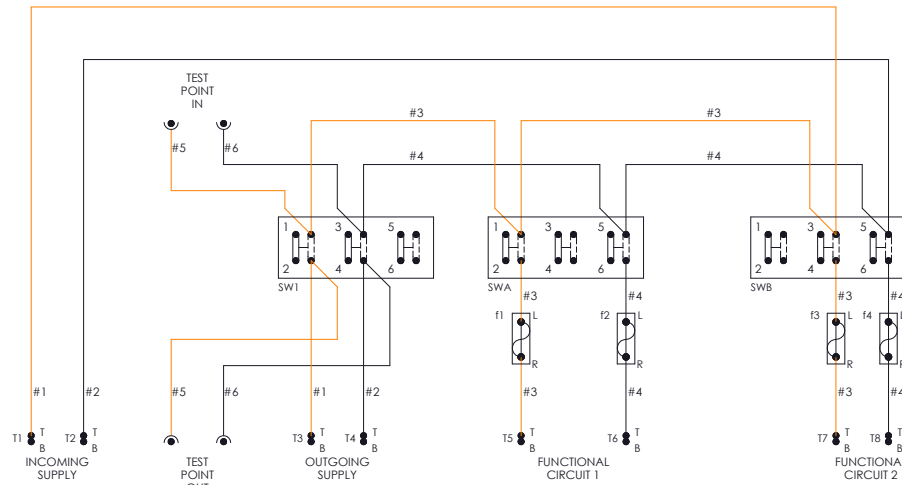
Alternately you can fill out *our online form*



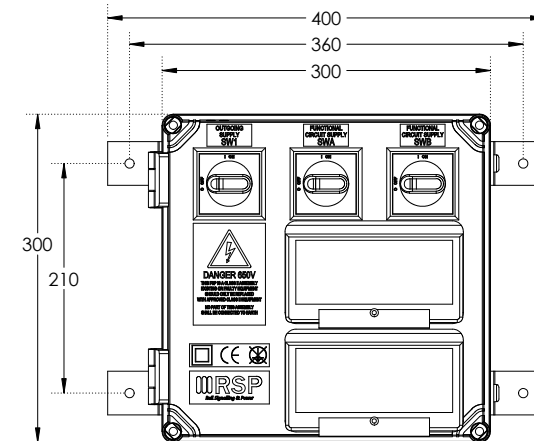
FSP04 - Type 08

FSP04 Type 08

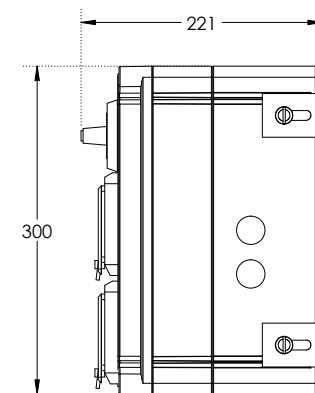
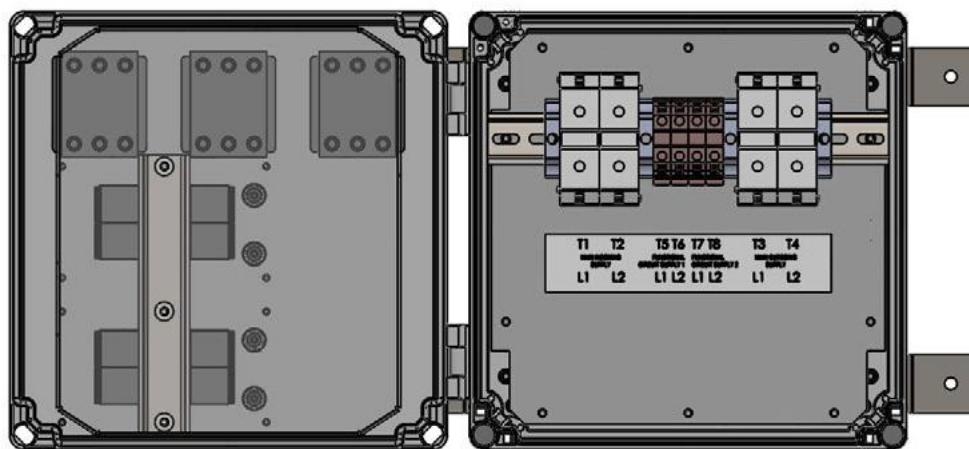
WIRING DIAGRAM



DIMENSIONING



INTERNAL VIEW





FSP04 - Type 09

FSP04 Switchgear Assembly - Type 09

- Railway Cat No. 092/002332.
- RSP Part No. DLLF4P09.
- Class II Distribution Enclosure for 650V Signalling Systems.
- Functional supplies share a common fuse.

Key Features:

- Dedicated Ring Power IN and OUT Isolators.
- Compatible with Copper (Cu) or Aluminium (Al) Feeder Cables from 16-120mm².
- Two Switched Output Functional Supplies sharing a common fuse.
- Functional Supply Fuse Carriers IEC60269 (ABB 10x38mm).
- Compliant to Network Rail specification NR/L2/ELP/27409 Issue 2.
- Dimensions W=400mm x H=300mm x D=221mm.
- Weight = 7.5Kg.

Support

All products come with a standard 12 month warranty with an option to extend if required and a minimum 35 year life expectancy. RSP has an experienced team on hand to provide ongoing support pre, during and after sales.



Contact us to order or get more info

Call us on **01752 969321**

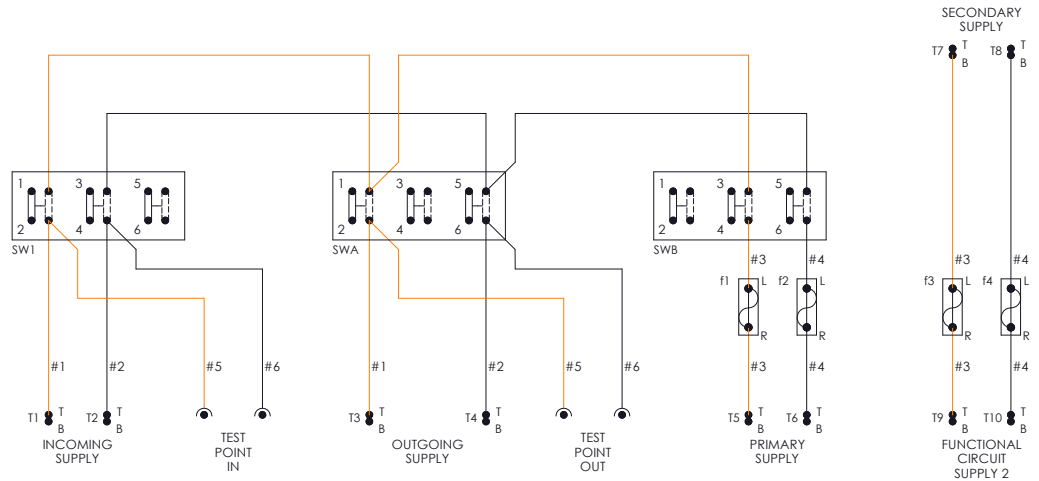
Alternately you can fill out *our online form*



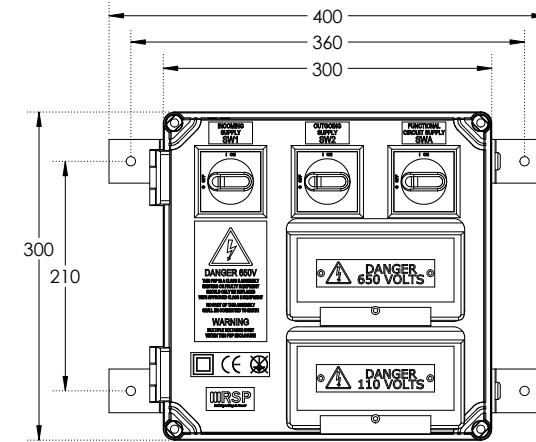
FSP04 - Type 09

FSP04 Type 09

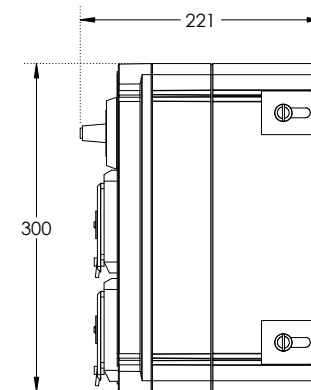
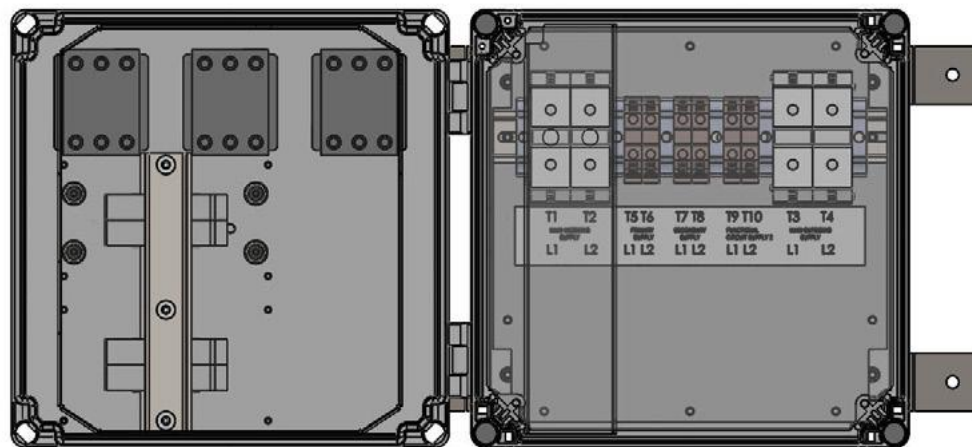
WIRING DIAGRAM



DIMENSIONING



INTERNAL VIEW



FSP04 - Type 10

FSP04 Switchgear Assembly - Type 10

- Railway Cat No. 092/002333.
- RSP Part No. DLLF4P10.
- Class II Distribution Enclosure for 650V Signalling Systems.
- Functional supplies share a common fuse.

Key Features:

- Dedicated Ring Power IN and OUT Isolators.
- Compatible with Copper (Cu) or Aluminium (Al) Feeder Cables from 16-120mm².
- Two Switched Output Functional Supplies sharing a common fuse.
- Functional Supply Fuse Carriers BS88.
- Compliant to Network Rail specification NR/L2/ELP/27409 Issue 2.
- Dimensions W=400mm x H=300mm x D=221mm.
- Weight = 7.5Kg.

Support

All products come with a standard 12 month warranty with an option to extend if required and a minimum 35 year life expectancy. RSP has an experienced team on hand to provide ongoing support pre, during and after sales.



Contact us to order or get more info

Call us on **01752 969321**

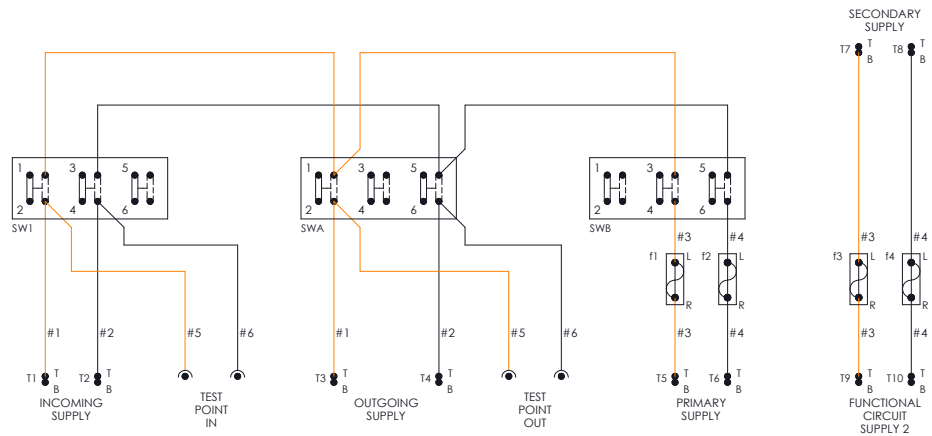
Alternately you can fill out *our online form*



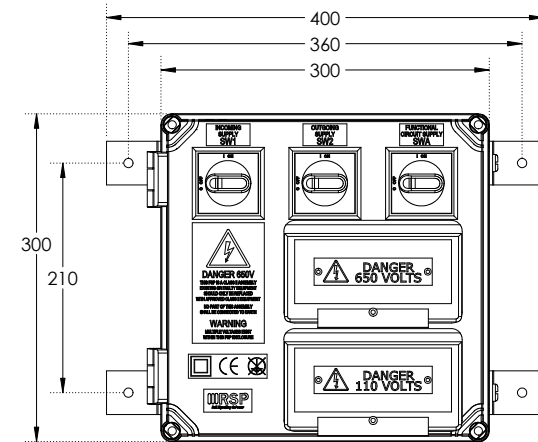
FSP04 - Type 10

FSP04 Type 10

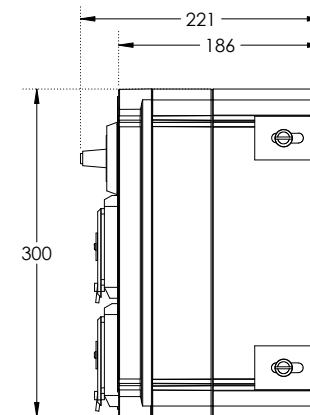
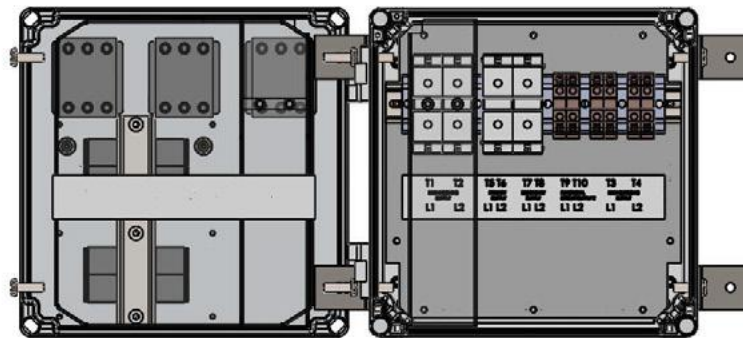
WIRING DIAGRAM



DIMENSIONING



INTERNAL VIEW





TC04



Terminal Chambers

- Network Rail Product Acceptance Certificate PA05/07058.
- Suitable for SIN119 Legacy Installation upgrades.

	2 Core Cable - Terminal Chambers						4 Core Cable - Terminal Chambers					
	TC04 Type 20 DLT4P20	TC04 Type 21 DLT4P21	TC04 Type 22 DLT4P21	TC04 Type 23 DLT4P23	TC04 Type 24 DLT4P24	TC04 Type 25 DLT4P25	TC04 Type 26 DLT4P26	TC04 Type 27 DLT4P27	TC04 Type 28 DLT4P28	TC04 Type 29 DLT4P29	TC04 Type 30 DLT4P30	TC04 Type 31 DLT4P31
Class	II	II	II	II	II	II	II	II	II	II	II	II
No of Terminals	2	2	2	2	2	2	4	4	4	4	4	4
Type of Terminals	Screw	Screw	Lug	Screw	Screw	Lug	Screw	Screw	Lug	Screw	Screw	Lug
Feeder Cable Size (Cu or Al)	6-50mm ²	16-120mm ²	16-120mm ²	6-50mm ²	16-120mm ²	16-120mm ²	6-50mm ²	16-120mm ²	16-120mm ²	6-50mm ²	16-120mm ²	16-120mm ²
Dimensions (mm)	W=300 H=200 D=132	W=300 H=200 D=187	W=300 H=200 D=132	W=300 H=300 D=133	W=300 H=300 D=188	W=300 H=300 D=133	W=300 H=200 D=132	W=300 H=200 D=187	W=300 H=200 D=132	W=300 H=300 D=133	W=300 H=300 D=188	W=300 H=300 D=133
Weight	4.5Kg	4.5Kg	4.5Kg	5.5Kg	5.5Kg	5.5Kg	4.5Kg	4.5Kg	4.5Kg	5.5Kg	5.5Kg	5.5Kg
Railway Cat No.	092/002334	092/002335	092/002336	092/002337	092/002338	092/002339	092/002340	092/002341	092/002342	092/002343	092/002344	092/002345
Additional Comments												



Terminal Chambers

	2 x 2 Core Cables - Segregated Terminal Chambers			2 x 2 Core Cables with Brass Plate for Terminating Shield/Earth	
	TC04 Type 32 DLLT4P32	TC04 Type 33 DLLT4P33	TC04 Type 34 DLLT4P34	TC04 Type 40 DLLT4P40	TC04 Type 41 DLLT4P41
Class	II	II	II	II	II
No of Terminals	4	4	4	1	2
Type of Terminals	Screw	Screw	Lug	Brass Plate	Brass Plates
Feeder Cable Size (Cu or Al)	6-50mm ²	16-120mm ²	16-120mm ²	50-120mm ²	50-120mm ²
Dimensions (mm)	W=300 H=300 D=133	W=300 H=300 D=188	W=300 H=300 D=133	W=300 H=200 D=132	W=500 H=200 D=132
Weight	5.5Kg	5.5Kg	5.5Kg	4.5Kg	9Kg
Railway Cat No.	092/002346	092/002347	092/002348	092/002349	092/002350
Additional Comments					

TC04 - Type 20

2 Core Cable Terminal Chambers - Type 20

- Railway Cat No. 092/002334.
- RSP Part No. DLLT4P20.
- Class II 650V Cable Terminal Chambers compatible with RSP Switchgear Assemblies.

Key Features:

- Two Screw Type Terminals.
- Compatible with Copper (Cu) or Aluminium (Al) Feeder Cables from 6-50mm².
- Compliant to Network Rail specification NR/L2/ELP/27409 Issue 1.
- Dimensions W=300mm x H=200mm x D=132mm.
- Weight = 4.5Kg.

Support

All products come with a standard 12 month warranty with an option to extend if required and a minimum 35 year life expectancy. RSP has an experienced team on hand to provide ongoing support pre, during and after sales.



Need a tailored design?

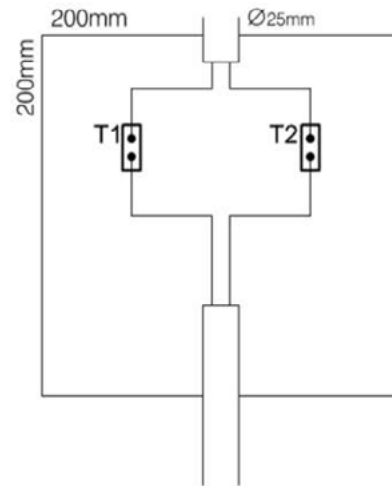
Our IRSE licensed designers can give you the bespoke solution you need. Call us on **01752 969321** or you can fill out **our online form**



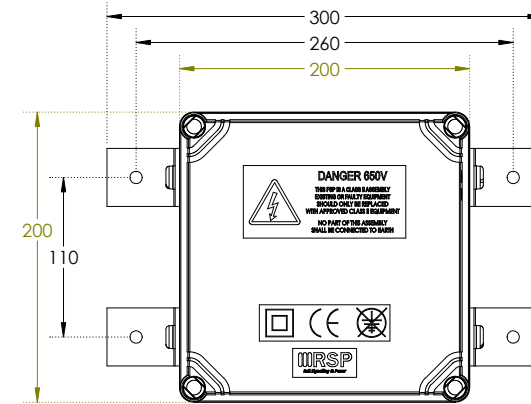
TC04 - Type 20

TC04 Type 20

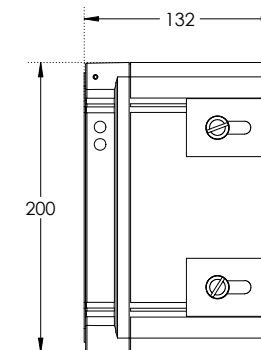
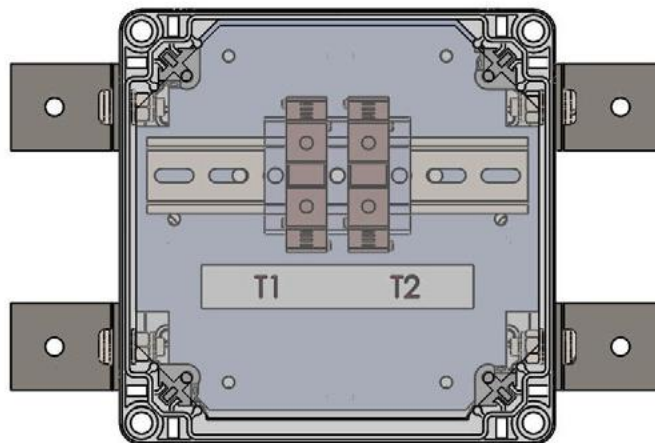
CONFIGURATION



DIMENSIONING



INTERNAL VIEW



TC04 - Type 21

2 Core Cable Terminal Chambers - Type 21

- Railway Cat No. 092/002335.
- RSP Part No. DLLT4P21.
- Class II 650V Cable Terminal Chambers compatible with RSP Switchgear Assemblies.

Key Features:

- Two Screw Type Terminals.
- Compatible with Copper (Cu) or Aluminium (Al) Feeder Cables from 16-120mm².
- Compliant to Network Rail specification NR/L2/ELP/27409 Issue 1.
- Dimensions W=300mm x H=200mm x D=187mm.
- Weight = 4.5Kg.

Support

All products come with a standard 12 month warranty with an option to extend if required and a minimum 35 year life expectancy. RSP has an experienced team on hand to provide ongoing support pre, during and after sales.



Contact us to order or get more info

Call us on **01752 969321**

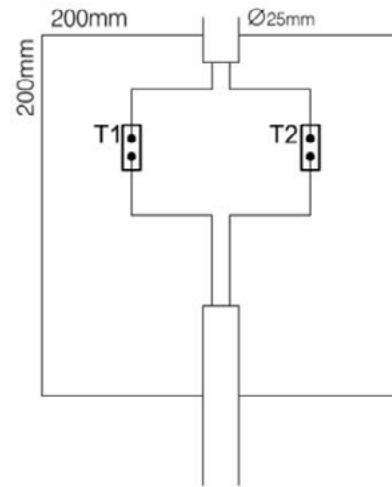
Alternately you can fill out *our online form*



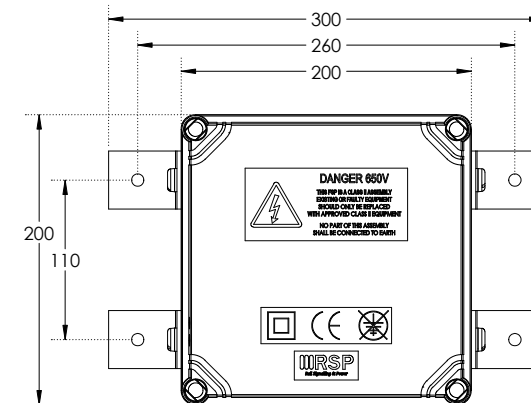
TC04 - Type 21

TC04 Type 21

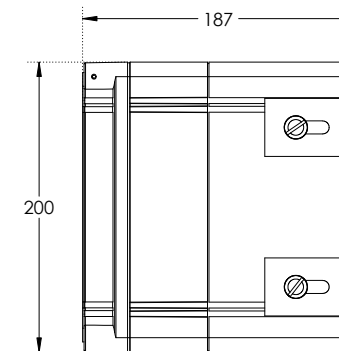
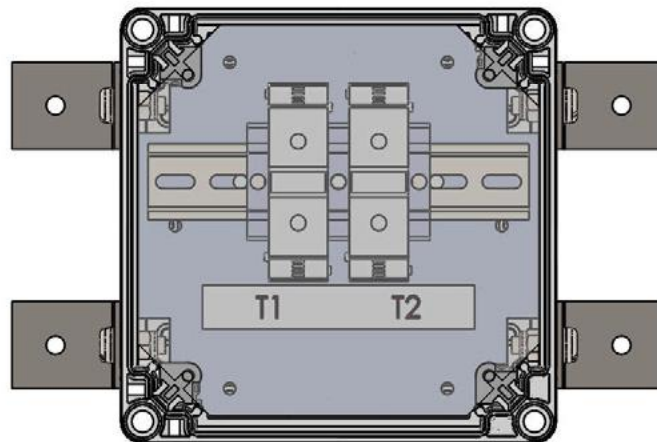
CONFIGURATION



DIMENSIONING



INTERNAL VIEW





TC04 - Type 22

2 Core Cable Terminal Chambers - Type 22

- Railway Cat No. 092/002336.
- RSP Part No. DLLT4P22.
- Class II 650V Cable Terminal Chambers compatible with RSP Switchgear Assemblies.

Key Features:

- Two Lug Type Terminals.
- Compatible with Copper (Cu) or Aluminium (Al) Feeder Cables from 16-120mm².
- Compliant to Network Rail specification NR/L2/ELP/27409 Issue 1.
- Dimensions W=300mm x H=200mm x D=132mm.
- Weight = 4.5Kg.

Support

All products come with a standard 12 month warranty with an option to extend if required and a minimum 35 year life expectancy. RSP has an experienced team on hand to provide ongoing support pre, during and after sales.



Contact us to order or get more info

Call us on **01752 969321**

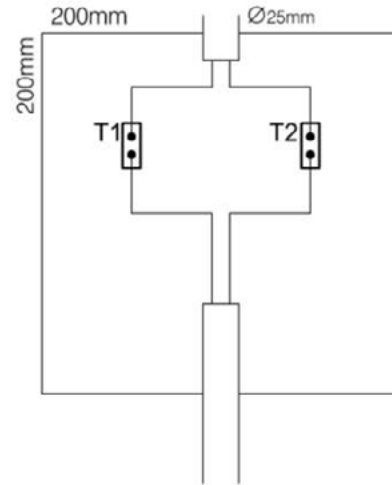
Alternately you can fill out *our online form*



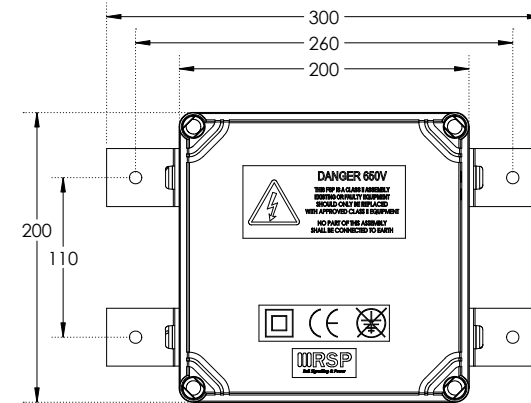
TC04 - Type 22

TC04 Type 22

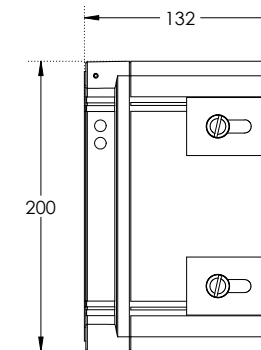
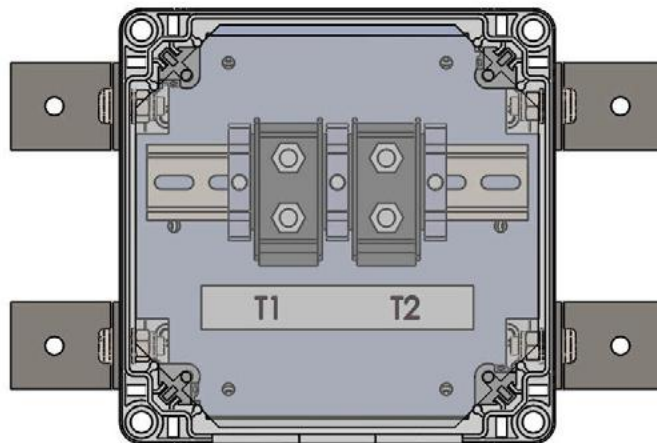
CONFIGURATION



DIMENSIONING



INTERNAL VIEW



TC04 - Type 23

2 Core Cable Terminal Chambers - Type 23

- Railway Cat No. 092/002337.
- RSP Part No. DLLT4P23.
- Class II 650V Cable Terminal Chambers compatible with RSP Switchgear Assemblies.

Key Features:

- Two Screw Type Terminals.
- Compatible with Copper (Cu) or Aluminium (Al) Feeder Cables from 6-50mm².
- Compliant to Network Rail specification NR/L2/ELP/27409 Issue 1.
- Dimensions W=300mm x H=300mm x D=133mm.
- Weight = 5.5Kg.

Support

All products come with a standard 12 month warranty with an option to extend if required and a minimum 35 year life expectancy. RSP has an experienced team on hand to provide ongoing support pre, during and after sales.



Contact us to order or get more info

Call us on **01752 969321**

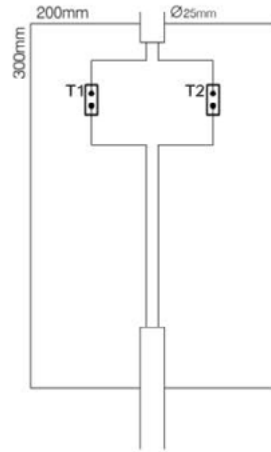
Alternately you can fill out *our online form*



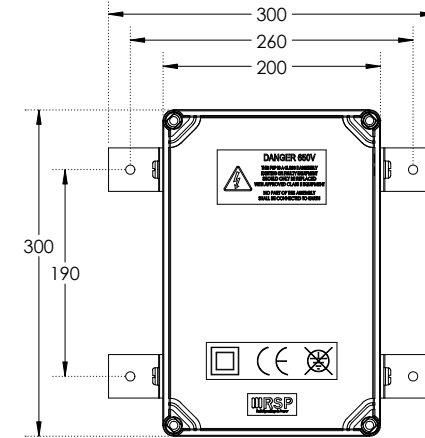
TC04 - Type 23

TC04 Type 23

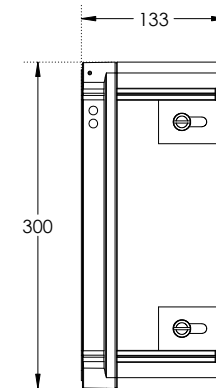
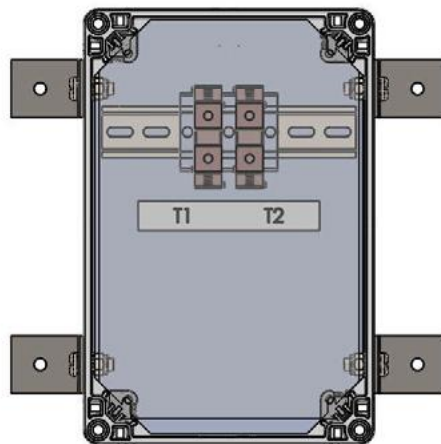
CONFIGURATION



DIMENSIONING



INTERNAL VIEW



TC04 - Type 24

2 Core Cable Terminal Chambers - Type 24

- ❑ Railway Cat No. 092/002338.
- ❑ RSP Part No. DLLT4P24.
- ❑ Class II 650V Cable Terminal Chambers compatible with RSP Switchgear Assemblies.

Key Features:

- ❑ Two Screw Type Terminals.
- ❑ Compatible with Copper (Cu) or Aluminium (Al) Feeder Cables from 16-120mm².
- ❑ Compliant to Network Rail specification NR/L2/ELP/27409 Issue 1.
- ❑ Dimensions W=300mm x H=300mm x D=188mm.
- ❑ Weight = 5.5Kg.

Support

All products come with a standard 12 month warranty with an option to extend if required and a minimum 35 year life expectancy. RSP has an experienced team on hand to provide ongoing support pre, during and after sales.



Contact us to order or get more info

Call us on **01752 969321**

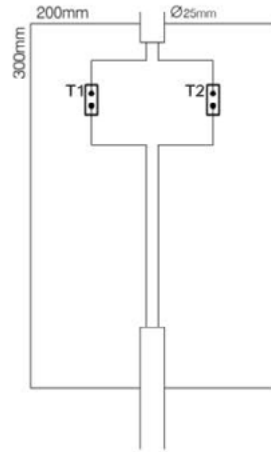
Alternately you can fill out *our online form*



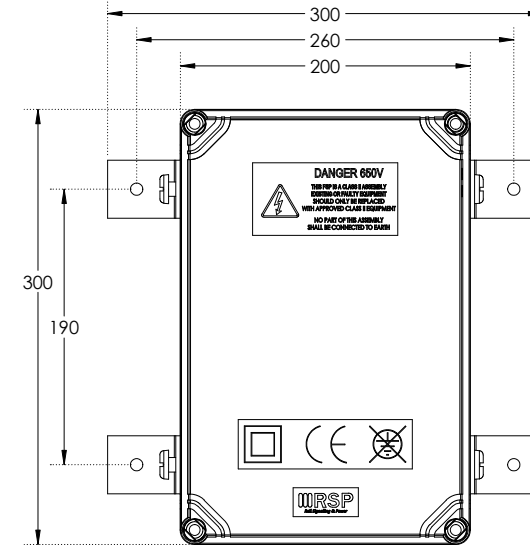
TC04 - Type 24

TC04 Type 24

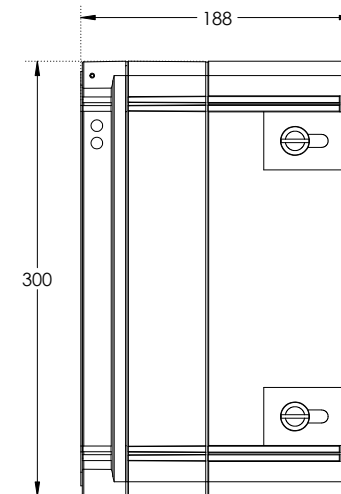
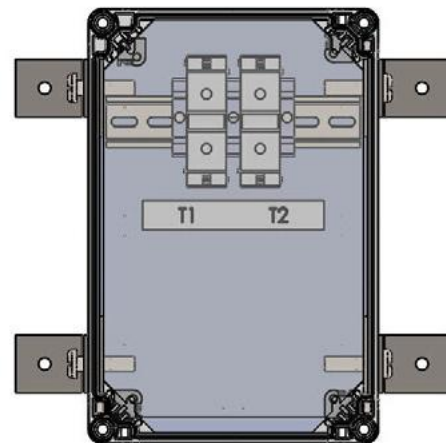
CONFIGURATION



DIMENSIONING



INTERNAL VIEW



TC04 - Type 25

2 Core Cable Terminal Chambers - Type 25

- Railway Cat No. 092/002339.
- RSP Part No. DLLT4P25.
- Class II 650V Cable Terminal Chambers compatible with RSP Switchgear Assemblies.

Key Features:

- Two Lugs Type Terminals.
- Compatible with Copper (Cu) or Aluminium (Al) Feeder Cables from 16-120mm².
- Compliant to Network Rail specification NR/L2/ELP/27409 Issue 1.
- Dimensions W=300mm x H=300mm x D=133mm.
- Weight = 5.5Kg.

Support

All products come with a standard 12 month warranty with an option to extend if required and a minimum 35 year life expectancy. RSP has an experienced team on hand to provide ongoing support pre, during and after sales.



Contact us to order or get more info

Call us on **01752 969321**

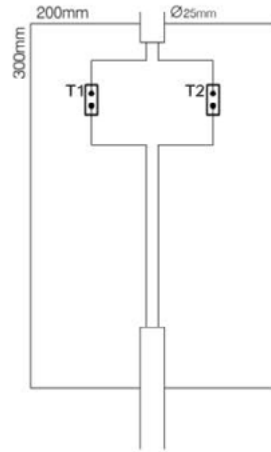
Alternately you can fill out *our online form*



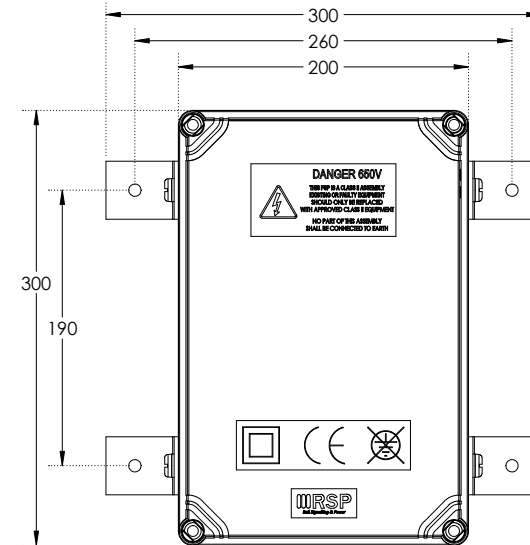
TC04 - Type 25

TC04 Type 25

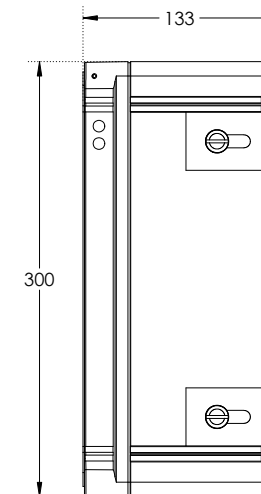
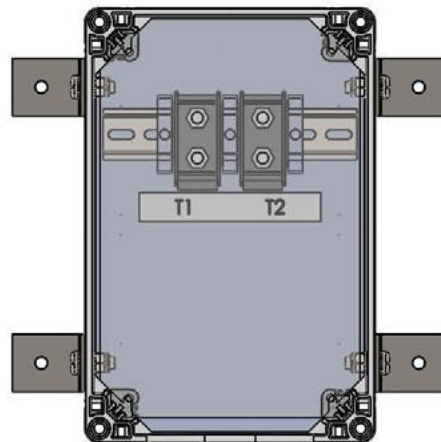
CONFIGURATION



DIMENSIONING



INTERNAL VIEW





TC04 - Type 26

2 Core Cable Terminal Chambers - Type 26

- Railway Cat No. 092/002340.
- RSP Part No. DLLT4P26.
- Class II 650V Cable Terminal Chambers compatible with RSP Switchgear Assemblies.

Key Features:

- Four Screw Type Terminals.
- Compatible with Copper (Cu) or Aluminium (Al) Feeder Cables from 6-50mm².
- Compliant to Network Rail specification NR/L2/ELP/27409 Issue 1.
- Dimensions W=300mm x H=200mm x D=132mm.
- Weight = 4.5Kg.

Support

All products come with a standard 12 month warranty with an option to extend if required and a minimum 35 year life expectancy. RSP has an experienced team on hand to provide ongoing support pre, during and after sales.



Contact us to order or get more info

Call us on **01752 969321**

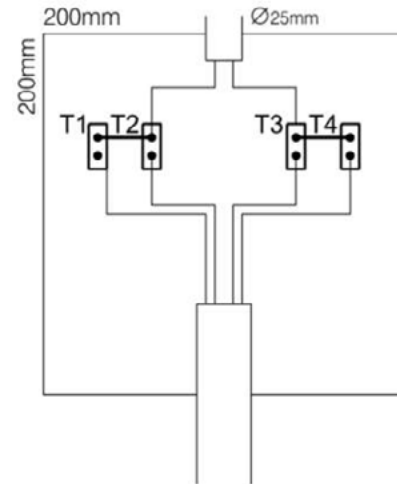
Alternately you can fill out *our online form*



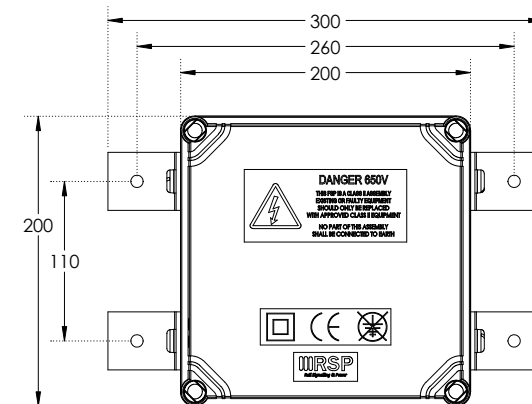
TC04 - Type 26

TC04 Type 26

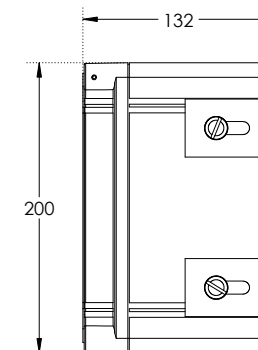
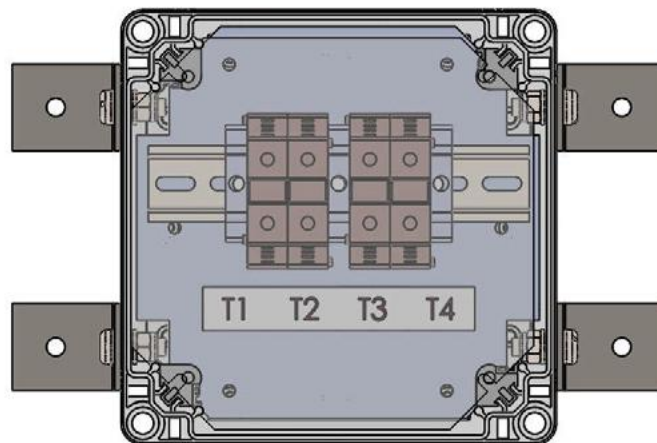
CONFIGURATION



DIMENSIONING



INTERNAL VIEW





TC04 - Type 27

2 Core Cable Terminal Chambers - Type 27

- ❑ Railway Cat No. 092/002341.
- ❑ RSP Part No. DLLT4P27.
- ❑ Class II 650V Cable Terminal Chambers compatible with RSP Switchgear Assemblies.

Key Features:

- ❑ Four Screw Type Terminals.
- ❑ Compatible with Copper (Cu) or Aluminium (Al) Feeder Cables from 16-120mm².
- ❑ Compliant to Network Rail specification NR/L2/ELP/27409 Issue 1.
- ❑ Dimensions W=300mm x H=200mm x D=187mm.
- ❑ Weight = 4.5Kg.

Support

All products come with a standard 12 month warranty with an option to extend if required and a minimum 35 year life expectancy. RSP has an experienced team on hand to provide ongoing support pre, during and after sales.



Contact us to order or get more info

Call us on **01752 969321**

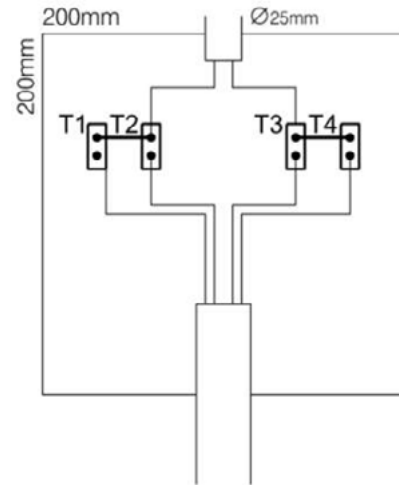
Alternately you can fill out *our online form*



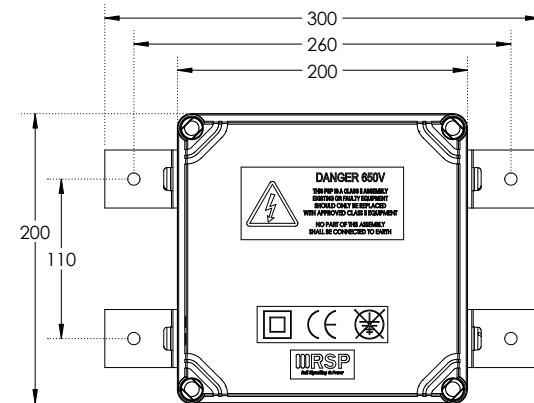
TC04 - Type 27

TC04 Type 27

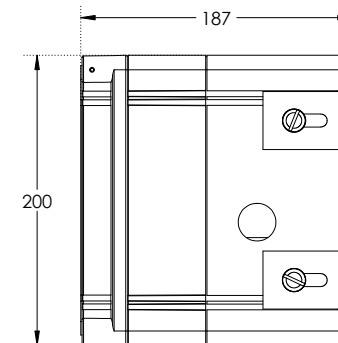
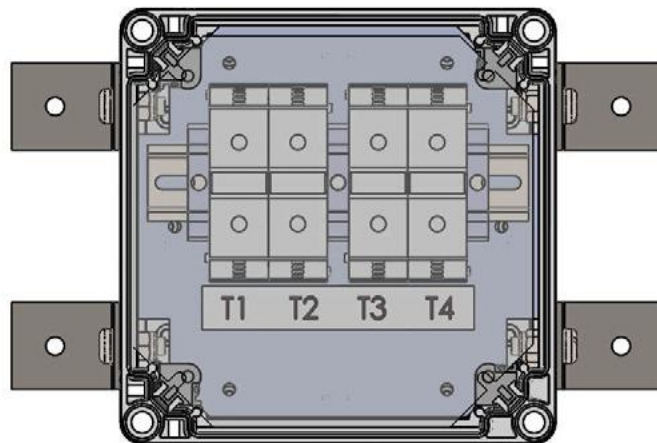
CONFIGURATION



DIMENSIONING



INTERNAL VIEW



TC04 - Type 28

2 Core Cable Terminal Chambers - Type 28

- ❑ Railway Cat No. 092/002342.
- ❑ RSP Part No. DLLT4P28.
- ❑ Class II 650V Cable Terminal Chambers compatible with RSP Switchgear Assemblies.

Key Features:

- ❑ Four Lug Type Terminals.
- ❑ Compatible with Copper (Cu) or Aluminium (Al) Feeder Cables from 16-120mm².
- ❑ Compliant to Network Rail specification NR/L2/ELP/27409 Issue 1.
- ❑ Dimensions W=300mm x H=200mm x D=132mm.
- ❑ Weight = 4.5Kg.

Support

All products come with a standard 12 month warranty with an option to extend if required and a minimum 35 year life expectancy. RSP has an experienced team on hand to provide ongoing support pre, during and after sales.



Contact us to order or get more info

Call us on **01752 969321**

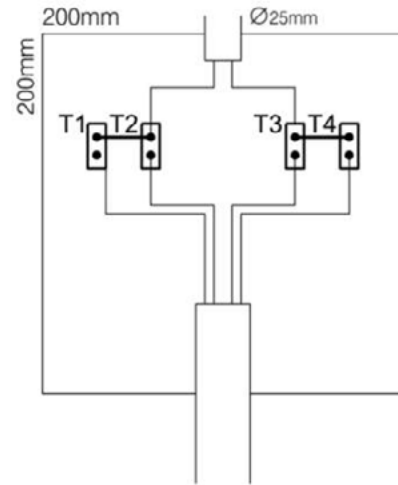
Alternately you can fill out *our online form*



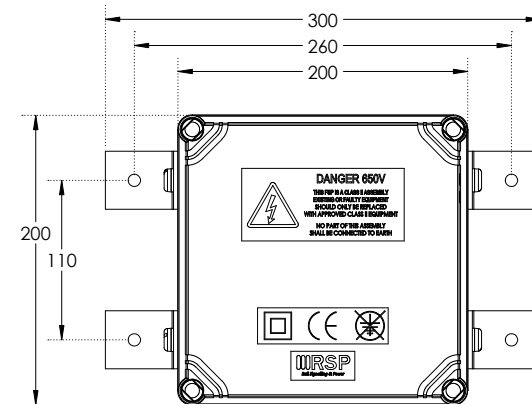
TC04 - Type 28

TC04 Type 28

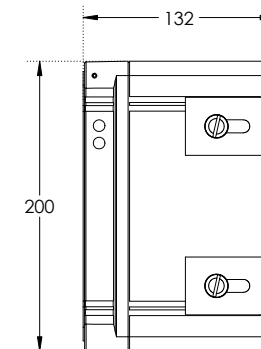
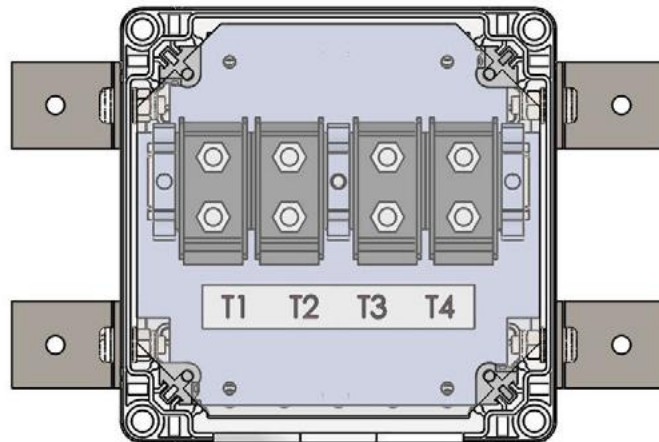
CONFIGURATION



DIMENSIONING



INTERNAL VIEW



TC04 - Type 29

2 Core Cable Terminal Chambers - Type 29

- Railway Cat No. 092/002343.
- RSP Part No. DLLT4P29.
- Class II 650V Cable Terminal Chambers compatible with RSP Switchgear Assemblies.

Key Features:

- Four Screw Type Terminals.
- Compatible with Copper (Cu) or Aluminium (Al) Feeder Cables from 6-50mm².
- Compliant to Network Rail specification NR/L2/ELP/27409 Issue 1.
- Dimensions W=300mm x H=300mm x D=133mm.
- Weight = 5.5Kg.

Support

All products come with a standard 12 month warranty with an option to extend if required and a minimum 35 year life expectancy. RSP has an experienced team on hand to provide ongoing support pre, during and after sales.



Contact us to order or get more info

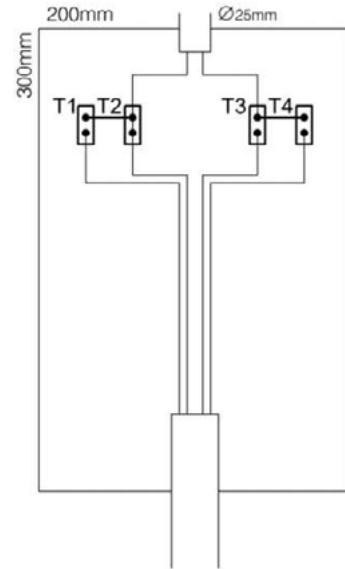
Call us on **01752 969321**

Alternately you can fill out *our online form*



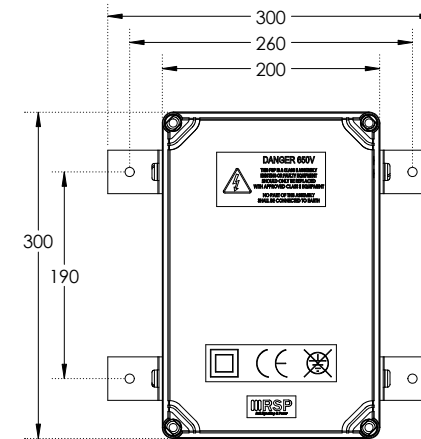
TC04 - Type 29

TC04 Type 29

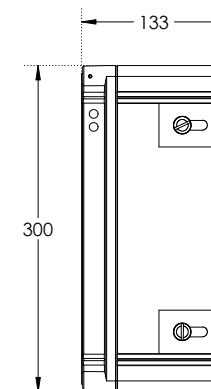
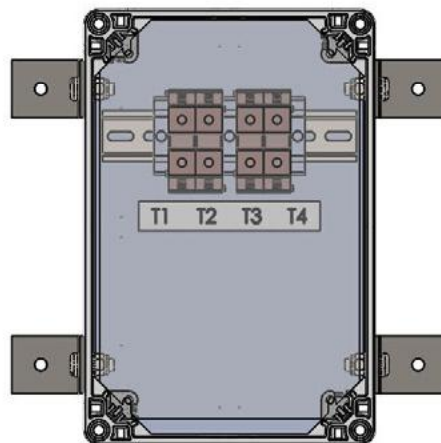


CONFIGURATION

DIMENSIONING



INTERNAL VIEW



TC04 - Type 30

2 Core Cable Terminal Chambers - Type 30

- Railway Cat No. 092/002344.
- RSP Part No. DLLT4P30.
- Class II 650V Cable Terminal Chambers compatible with RSP Switchgear Assemblies.

Key Features:

- Four Screw Type Terminals.
- Compatible with Copper (Cu) or Aluminium (Al) Feeder Cables from 16-120mm².
- Compliant to Network Rail specification NR/L2/ELP/27409 Issue 1.
- Dimensions W=300mm x H=300mm x D=188mm.
- Weight = 5.5Kg.

Support

All products come with a standard 12 month warranty with an option to extend if required and a minimum 35 year life expectancy. RSP has an experienced team on hand to provide ongoing support pre, during and after sales.



Contact us to order or get more info

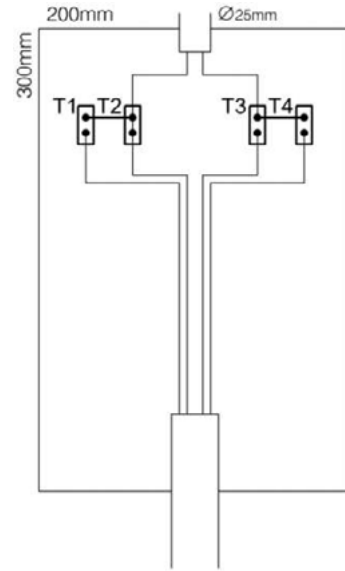
Call us on **01752 969321**

Alternately you can fill out *our online form*



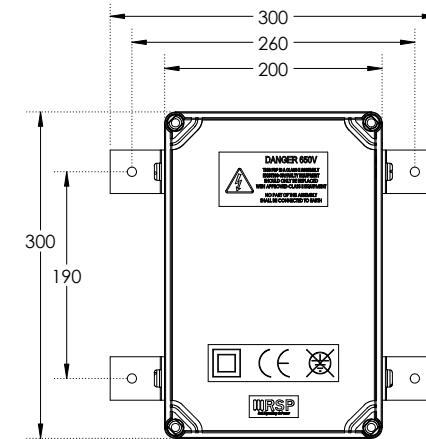
TC04 - Type 30

TC04 Type 30

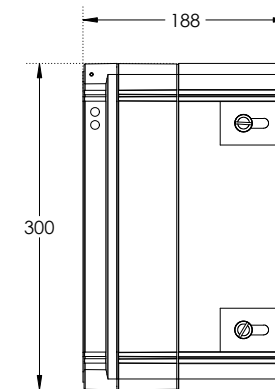
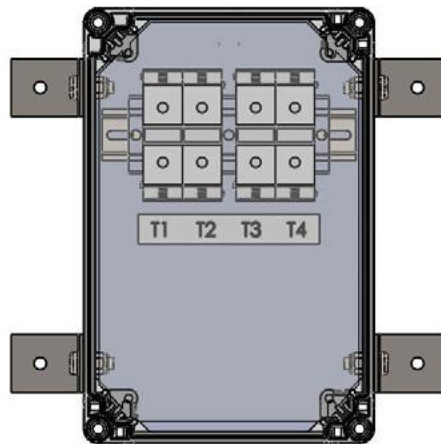


CONFIGURATION

DIMENSIONING



INTERNAL VIEW



TC04 - Type 31

2 Core Cable Terminal Chambers - Type 31

- Railway Cat No. 092/002345.
- RSP Part No. DLLT4P31.
- Class II 650V Cable Terminal Chambers compatible with RSP Switchgear Assemblies.

Key Features:

- Four Lug Type Terminals.
- Compatible with Copper (Cu) or Aluminium (Al) Feeder Cables from 16-120mm².
- Compliant to Network Rail specification NR/L2/ELP/27409 Issue 1.
- Dimensions W=300mm x H=300mm x D=133mm.
- Weight = 5.5Kg.

Support

All products come with a standard 12 month warranty with an option to extend if required and a minimum 35 year life expectancy. RSP has an experienced team on hand to provide ongoing support pre, during and after sales.



Contact us to order or get more info

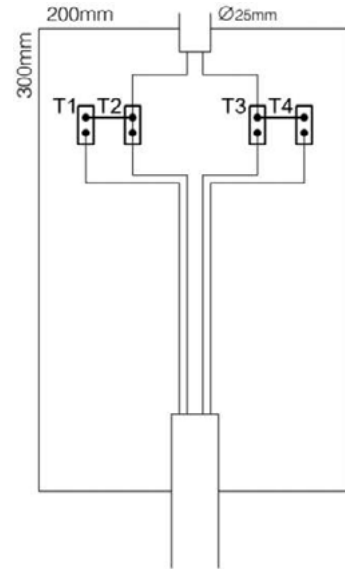
Call us on **01752 969321**

Alternately you can fill out *our online form*



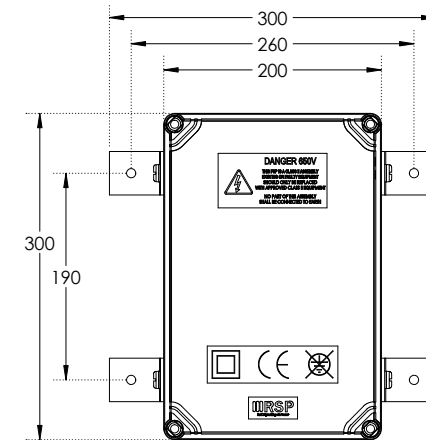
TC04 - Type 31

TC04 Type 31

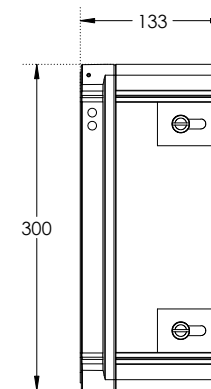
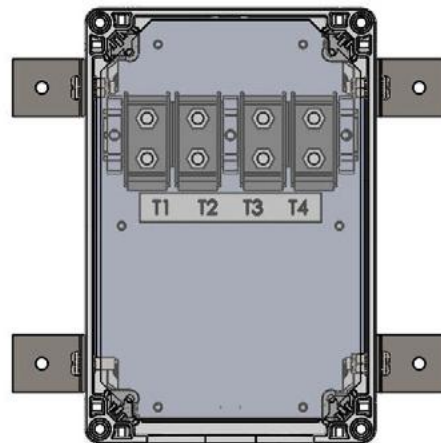


CONFIGURATION

DIMENSIONING



INTERNAL VIEW



TC04 - Type 32

2 Core Cable Terminal Chambers - Type 32

- ❑ Railway Cat No. 092/002346.
- ❑ RSP Part No. DLLT4P32.
- ❑ Class II 650V Cable Terminal Chambers compatible with RSP Switchgear Assemblies.

Key Features:

- ❑ Four Screw Type Terminals.
- ❑ Compatible with Copper (Cu) or Aluminium (Al) Feeder Cables from 6-50mm².
- ❑ Compliant to Network Rail specification NR/L2/ELP/27409 Issue 1.
- ❑ Dimensions W=300mm x H=300mm x D=133mm.
- ❑ Weight = 5.5Kg.

Support

All products come with a standard 12 month warranty with an option to extend if required and a minimum 35 year life expectancy. RSP has an experienced team on hand to provide ongoing support pre, during and after sales.



Contact us to order or get more info

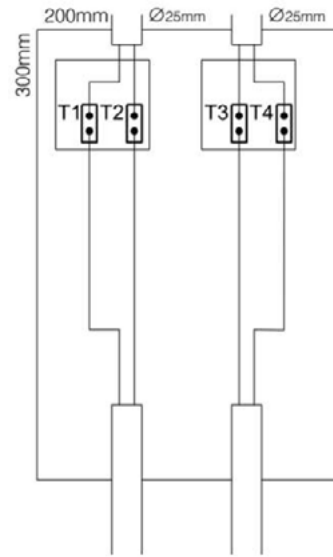
Call us on **01752 969321**

Alternately you can fill out *our online form*



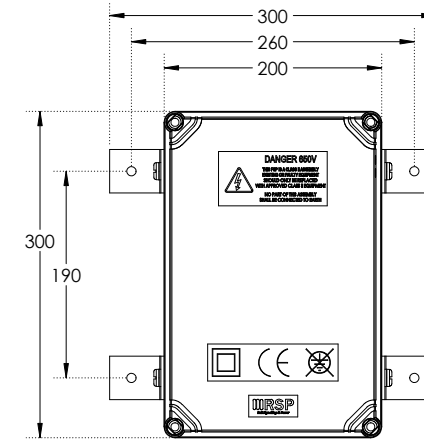
TC04 - Type 32

TC04 Type 32

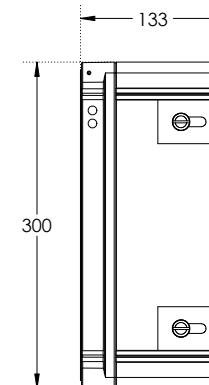
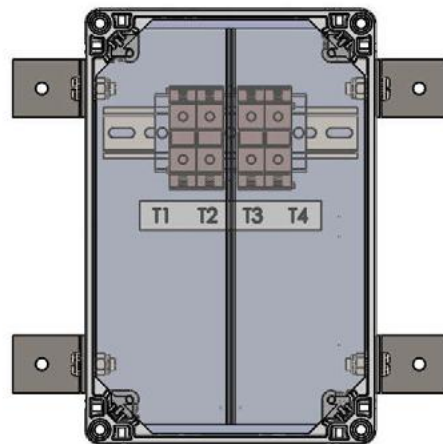


CONFIGURATION

DIMENSIONING



INTERNAL VIEW





TC04 - Type 33

2 Core Cable Terminal Chambers - Type 33

- Railway Cat No. 092/002347.
- RSP Part No. DLLT4P33.
- Class II 650V Cable Terminal Chambers compatible with RSP Switchgear Assemblies.

Key Features:

- Four Screw Type Terminals.
- Compatible with Copper (Cu) or Aluminium (Al) Feeder Cables from 16-120mm².
- Compliant to Network Rail specification NR/L2/ELP/27409 Issue 1.
- Dimensions W=300mm x H=300mm x D=188mm.
- Weight = 5.5Kg.

Support

All products come with a standard 12 month warranty with an option to extend if required and a minimum 35 year life expectancy. RSP has an experienced team on hand to provide ongoing support pre, during and after sales.



Contact us to order or get more info

Call us on **01752 969321**

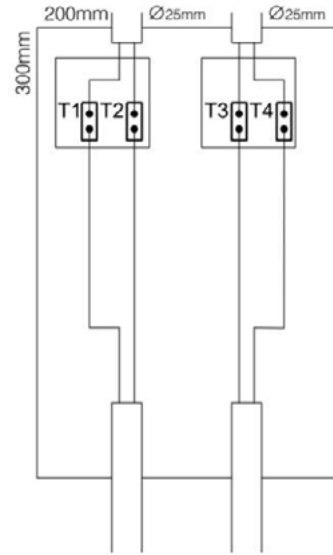
Alternately you can fill out *our online form*



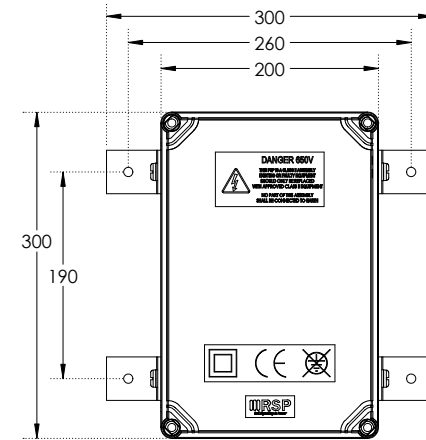
TC04 - Type 33

TC04 Type 33

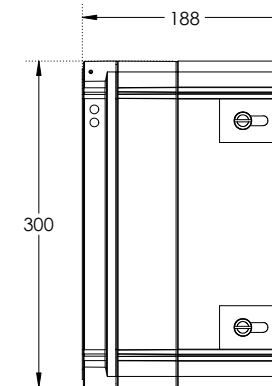
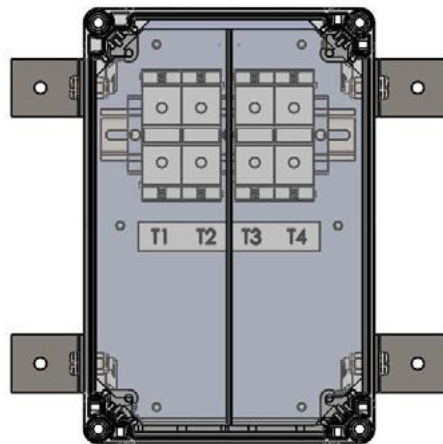
CONFIGURATION



DIMENSIONING



INTERNAL VIEW



TC04 - Type 34

2 Core Cable Terminal Chambers - Type 34

- Railway Cat No. 092/002348.
- RSP Part No. DLLT4P34.
- Class II 650V Cable Terminal Chambers compatible with RSP Switchgear Assemblies.

Key Features:

- Four Lug Type Terminals.
- Compatible with Copper (Cu) or Aluminium (Al) Feeder Cables from 16-120mm².
- Compliant to Network Rail specification NR/L2/ELP/27409 Issue 1.
- Dimensions W=300mm x H=300mm x D=133mm.
- Weight = 5.5Kg.

Support

All products come with a standard 12 month warranty with an option to extend if required and a minimum 35 year life expectancy. RSP has an experienced team on hand to provide ongoing support pre, during and after sales.



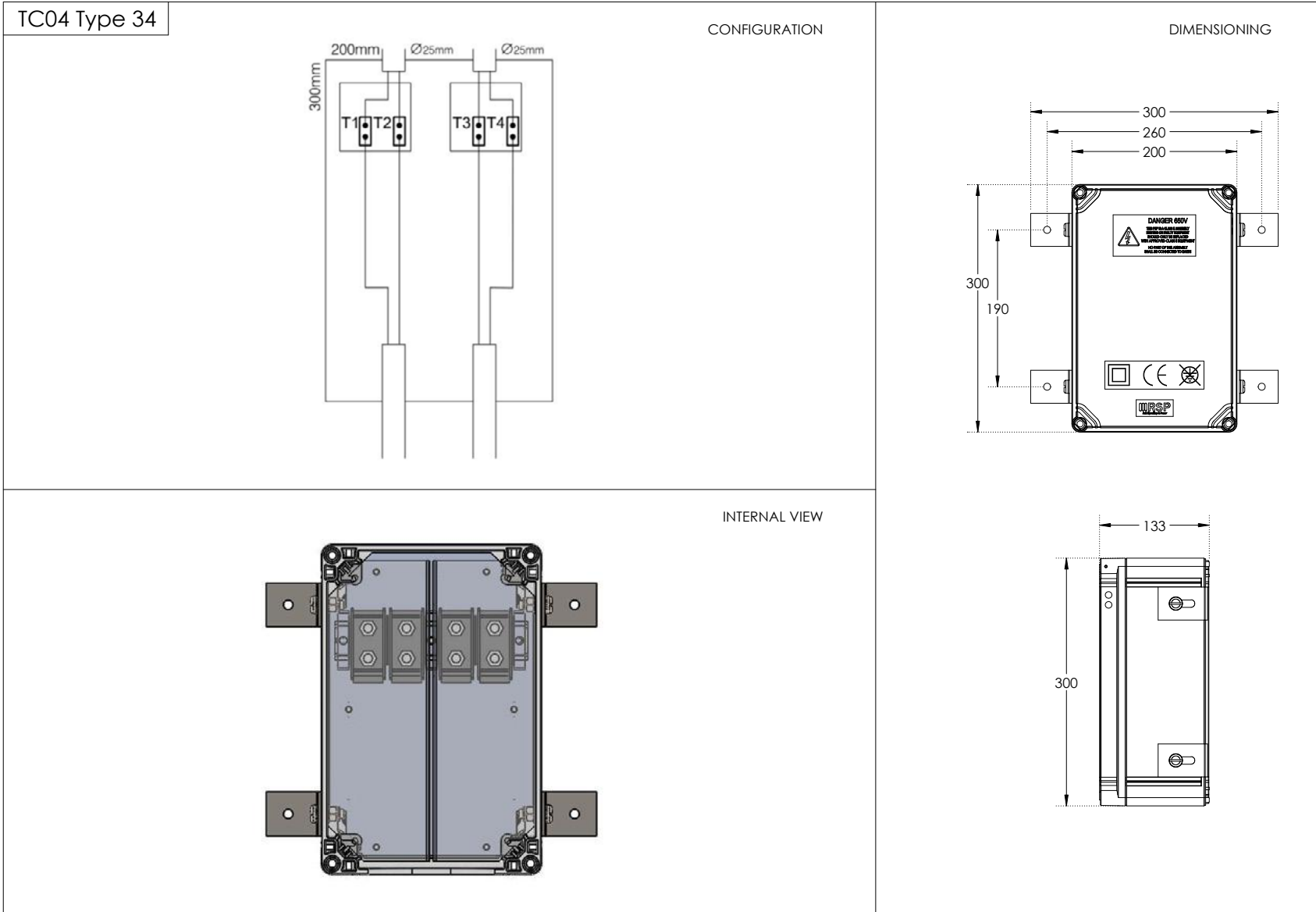
Contact us to order or get more info

Call us on **01752 969321**

Alternately you can fill out *our online form*



TC04 - Type 34



TC04 - Type 40

2 Core Cable Terminal Chambers - Type 40

- ❑ Railway Cat No. 092/002349.
- ❑ RSP Part No. DLLT4P40.
- ❑ Class II 650V Cable Terminal Chambers compatible with RSP Switchgear Assemblies.

Key Features:

- ❑ One Brass Plate Type Terminal.
- ❑ Compatible with Copper (Cu) or Aluminium (Al) Feeder Cables from 50-120mm².
- ❑ Compliant to Network Rail specification NR/L2/ELP/27409 Issue 1.
- ❑ Dimensions W=300mm x H=200mm x D=132mm.
- ❑ Weight = 4.5Kg.

Support

All products come with a standard 12 month warranty with an option to extend if required and a minimum 35 year life expectancy. RSP has an experienced team on hand to provide ongoing support pre, during and after sales.



Contact us to order or get more info

Call us on **01752 969321**

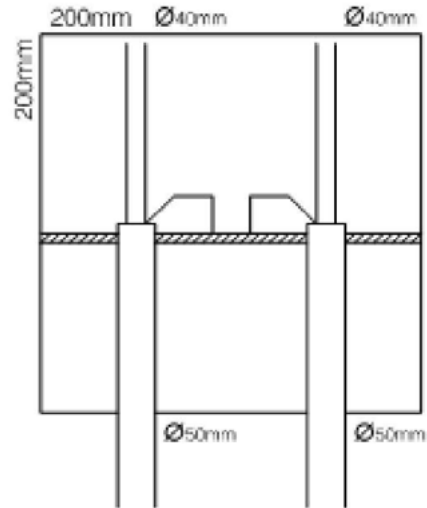
Alternately you can fill out *our online form*



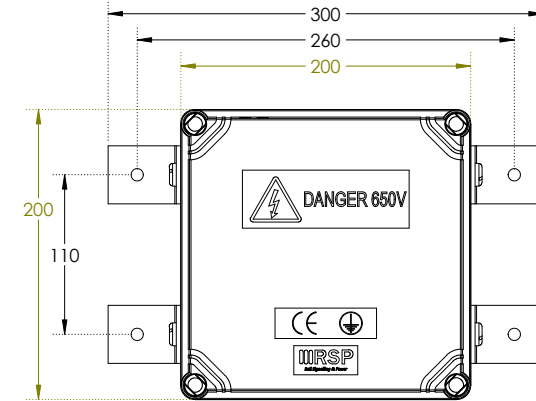
TC04 - Type 40

TC04 Type 40

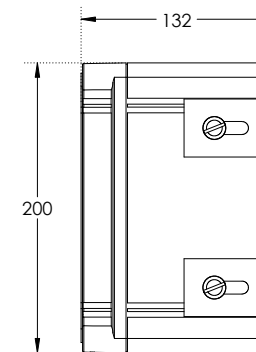
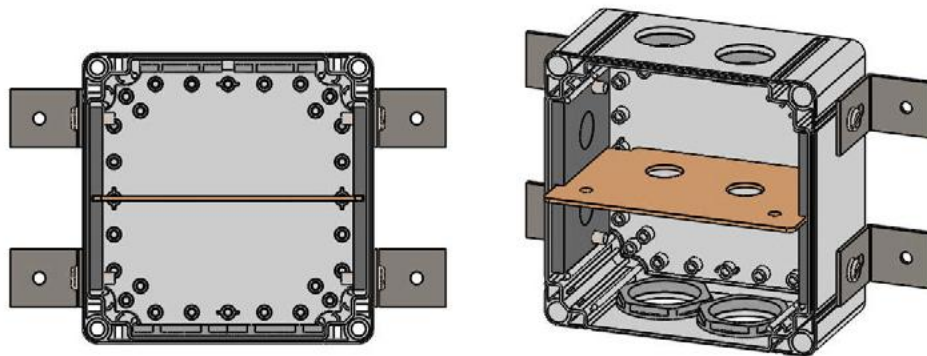
CONFIGURATION



DIMENSIONING



INTERNAL VIEW



TC04 - Type 41

2 Core Cable Terminal Chambers - Type 41

- ❑ Railway Cat No. 092/002350.
- ❑ RSP Part No. DLLT4P41.
- ❑ Class II 650V Cable Terminal Chambers compatible with RSP Switchgear Assemblies.

Key Features:

- ❑ Two Brass Plate Type Terminals.
- ❑ Compatible with Copper (Cu) or Aluminium (Al) Feeder Cables from 50-120mm².
- ❑ Compliant to Network Rail specification NR/L2/ELP/27409 Issue 1.
- ❑ Dimensions W=500mm x H=200mm x D=132mm.
- ❑ Weight = 9Kg.

Support

All products come with a standard 12 month warranty with an option to extend if required and a minimum 35 year life expectancy. RSP has an experienced team on hand to provide ongoing support pre, during and after sales.



Contact us to order or get more info

Call us on **01752 969321**

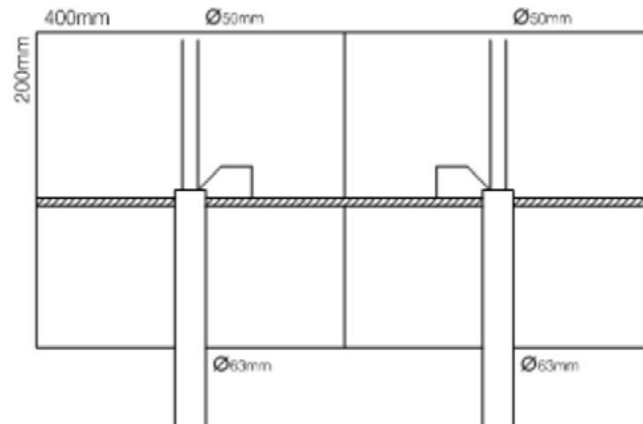
Alternately you can fill out *our online form*



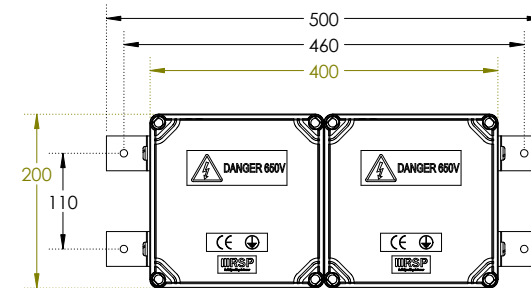
TC04 - Type 41

TC04 Type 41

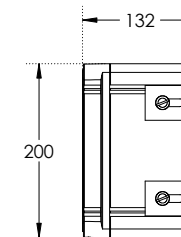
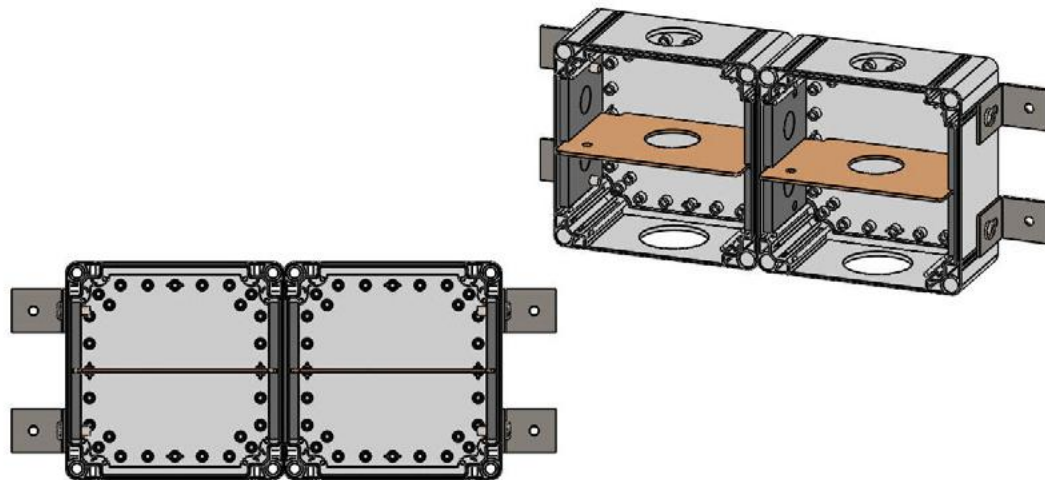
CONFIGURATION



DIMENSIONING



INTERNAL VIEW





RSP Principal and Auxiliary Supply Points



Available in standard Network Rail sizes from type 1 to 9 or made to your bespoke dimensions. RSP can provide REB style buildings to create modular, compact and mini PSP/ASP solutions to meet any requirements.

Key Features:

- ❑ Built to either your own design or allow us to produce detailed design using our unique RSP standardised approach to provide; greater consistency, improved lead times and cost savings.
- ❑ Available in a range of RAL colours including standard Green and Grey railway options.
- ❑ Built and tested to BS EN61439 and BS7671 using industry leading materials and switchgear and with a fully documented client focussed Factory Acceptance Test.
- ❑ Available with re-enforced flooring to enable both generator and UPS installation.
- ❑ Full range of options available including: additional internal walls, removable side walls, floor re-enforcement, bespoke lighting arrangements, forced air ventilation or air conditioning as required, intruder and fire alarms.



Contact us to order or get more info

Call us on **01752 969321**

Alternately you can fill out *our online form*



DNO Cubicles



DNO Cubicles

Choose from one of our standard size and layout solutions or allow us to design and build a bespoke solution to suit your needs. Our DNO cubicles come in both single phase 230V and 3 Phase 400V versions.

Key Features:

- ❑ Supplied complete with full detailed design and O&M manuals in accordance with NR/L2/SIG/ELP/27417 for ease of handover and entry into service.
- ❑ Fully built and tested in accordance with BS EN 61439 with a fully documented client focussed Factory Acceptance Test.
- ❑ Available in either GRP, mild or stainless steel enclosures.
- ❑ Using industry leading materials and switchgear.



Contact us to order or get more info

Call us on **01752 969321**

Alternately you can fill out *our online form*



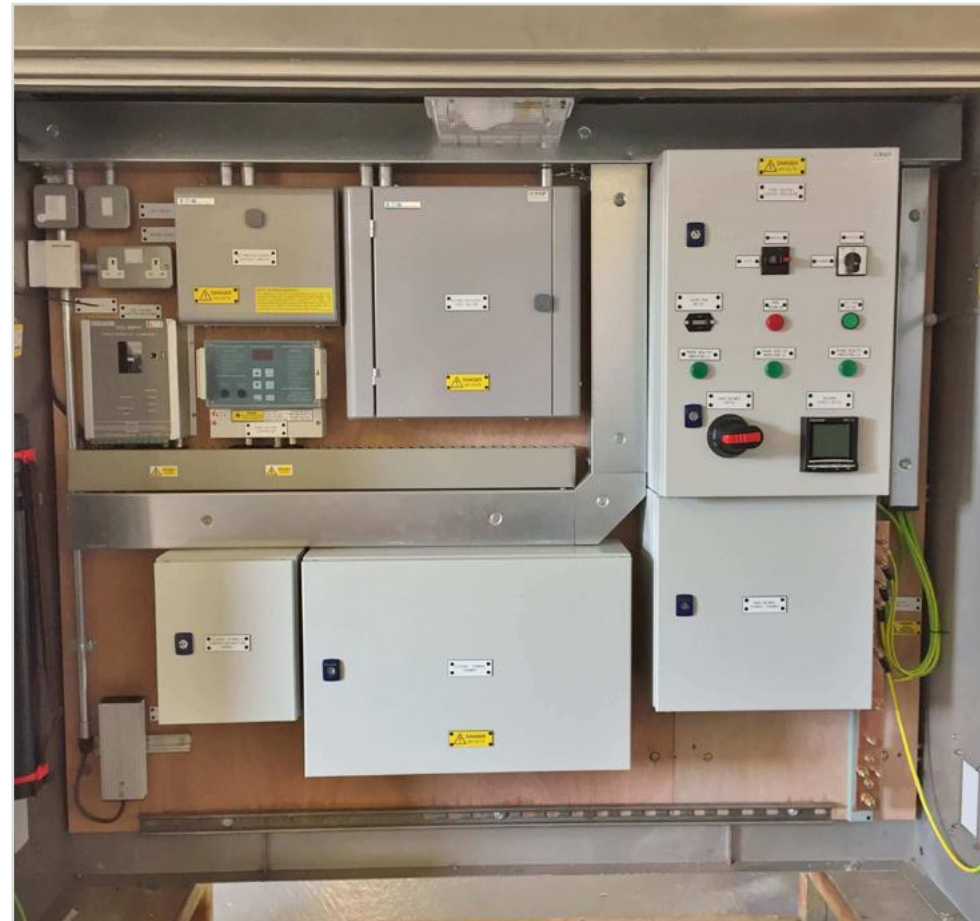
Points Heating Control Cubicles

Points Heating Control Cubicles

Choose from one of our standard size and layout solutions or allow us to design and build a bespoke solution to suit your needs. Our Points Heating Control Cubicles are available in Single or 3 Phase versions capable of feeding up to 8 Point ends.

Key Features:

- ❑ Supplied complete with full detailed design and O&M manuals in accordance with NR/L2/SIG/ELP/27417 for ease of handover and entry into service.
- ❑ Fully built and tested in accordance with BS EN 61439 with a fully documented client led Factory Acceptance Test provided.
- ❑ Available in either GRP, mild or stainless steel enclosures.
- ❑ Using industry leading materials and switchgear.



Contact us to order or get more info

Call us on **01752 969321**

Alternately you can fill out *our online form*



Level Crossing Lighting Control Unit / Cubicles (LCU / LCC)

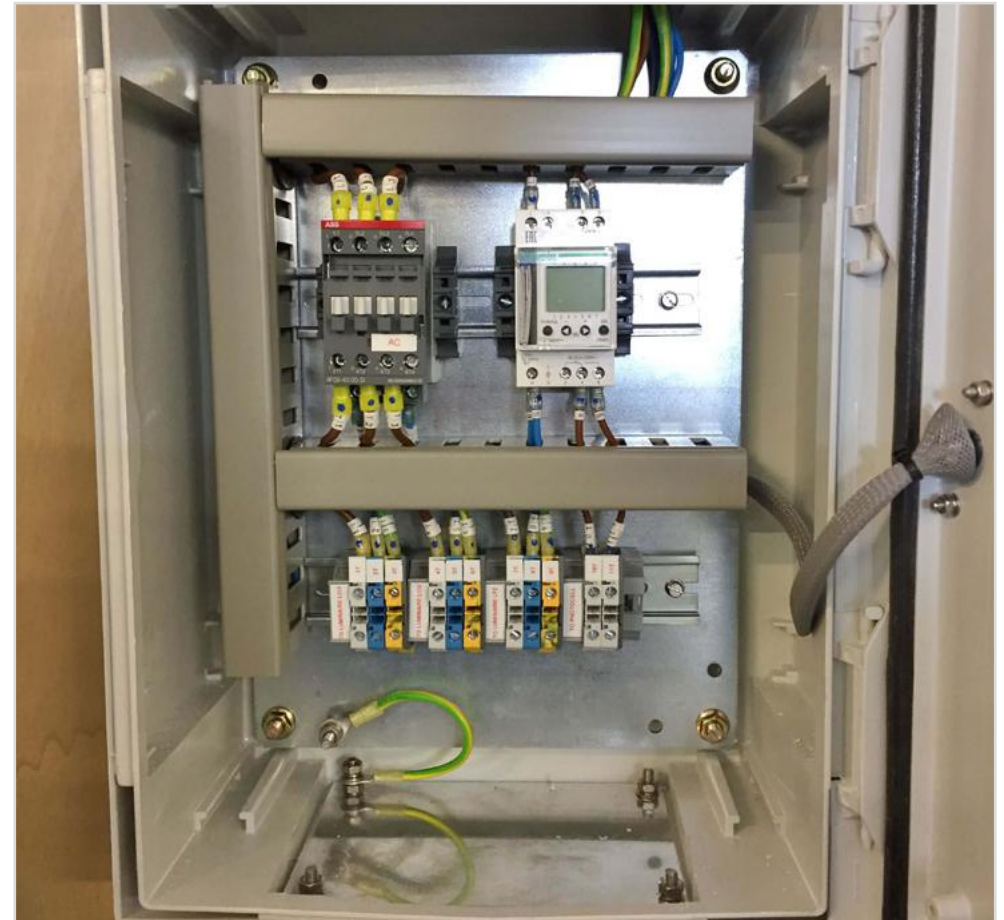


Choose from one of our standard size and layout solutions for Lighting Control Cubicles (LCC) or allow us to design and build a bespoke solution to suit your needs.

Don't need an entire cubicle? RSP can also supply a factory built and fully tested Lighting Control and Override Unit (LCU) to retrofit inside an existing housing at a fraction of the cost of an entire cubicle - quote RSP Part Number DLLLCU01.

Key Features:

- ❑ Supplied complete with full detailed design and O&M manuals in accordance with NR/L2/SIG/ELP/27417 for ease of handover and entry into service.
- ❑ Fully built and tested in accordance with BS EN 61439 with a fully documented client led Factory Acceptance Test provided.
- ❑ Available in either GRP, mild or stainless steel enclosures.
- ❑ Using industry leading materials and switchgear.



Contact us to order or get more info

Call us on **01752 969321**

Alternately you can fill out *our online form*



Call: 01752 969321

Email: enquiries@rsprail.co.uk

Visit: www.rsprail.co.uk

17 Moorlands Lane
Saltash, Cornwall PL12 4HJ

