



Functional Supply Point (FSP)

Range Overview

Overview

A Functional Supply Point (FSP) is the equipment tasked with power distribution throughout the rail infrastructure. RSP's range of products cover all installation requirements - from a legacy changeover of a single piece of switchgear to a full FSP equipment housing, offering multiple power supplies and auto reconfiguration facility.

Range

RSP produce a range of FSP products in both class I and class II for use in signalling power distribution systems as defined in NR/L2/ELP/27410. The range conforms to NR/L2/SIGELP/27409 Issue 2.

RSP's FSP01/02 switchgear assemblies is suitable for single and dual end fed systems with manual reconfiguration. Available in both 240V and 650V configurations.

The FSP 03 can be installed within dual end fed, auto reconfiguration systems and can be installed with all approved ARS systems currently in the market place. Switching can be provided for 110V through to 650V installations, both ac and dc.

The FSP04 range is designed specifically for SIN119 solutions to replace legacy installations. Supporting this is the range of TC04 Terminal Chambers which can be used for cable termination to support the whole FSP range.

In House Manufacture And Testing

All our products are built at our manufacturing facilities in Plymouth. Our manufacturing and test staff have a wealth of experience in this field and also hold IRSE licences appropriate to their role. This gives our clients peace of mind that we will deliver a high standard of workmanship and quality which is then verified by our in house testing team, who carry out full 3A testing of each product.

Innovation

The RSP range offers a number of unique advantages to the industry and our customers. We can install up to four 1500VA transformers or up to four 10A T/J's within a single FSP. Alternatively we could provide an FSP that houses a 25Ah point battery system, inclusive of charger. Feeder cables up to 120mm² in both copper and aluminium can also be installed easily, using our sliding gland plates.

Support

All products come with a standard 12 month warranty with an option to extend if required and a minimum 35 year life expectancy. RSP has an experienced team on hand to provide ongoing support pre, during and after sales.



Contact us to order or get more info

Call us on **01752 969321**

Alternately you can fill out *our online form*



Power Product Selector

Use the table below to find your ideal product

FSP Type	Distribution Topology		Architecture Configuration		Installation	
	Single End Fed	Dual End Fed	Manual	Auto	New	Legacy
FSP01						
FSP02						
FSP03						
FSP04						



FSP01 and 02

- Network Rail Product Acceptance Certificate PA05/07055 (Class I) and PA05/07053 (Class II).
- Compliant to NR/L2/SIGELP27409 Issue 2.
- All FSP01 and 02 products come fitted with RSP's unique removable and split-able gland plates.

	FSP Type 20 DLLF2S20	FSP Type 21 DLLF2S21	FSP Type 20 DLLF2P20-02	FSP Type 21 DLLF2P21-02	FSP Type 22 DLLF2P22-02
Class	I	I	II	II	II
Feeder Switches	2	2	2	2	2
Functional Supplies	2	3	2	3	3
Feeder Cable Size (Cu or Al)	16-120mm ²	16-120mm ²	16-120mm ²	16-120mm ²	16-120mm ²
Type of Fuses	BS88	BS88	IEC	IEC	IEC
Dimensions (mm)	W=498 H=346 D=259	W=498 H=346 D=259	W=506 H=400 D=233	W=506 H=400 D=233	W=506 H=400 D=233
Weight	18Kg	18Kg	13.5Kg	13.5Kg	13.5Kg
Railway Cat No.	092/000296	092/000297	054/213902	054/213903	054/213904
Additional Comments	Surge Arrestor Protection provided		Surge Arrestor Protection provided		Labelled for use in 240V systems.



FSP01/02 - Type 20 Class 1

FSP01/02 Switchgear Assembly - Type 20 Class 1

- ❑ Railway Cat No - 092/000296.
- ❑ RSP Part No. DLLF2S20.
- ❑ Class I Distribution Enclosure for 650V Signalling Systems.
- ❑ Surge Arrestor Protection provided.
- ❑ Robust stainless steel enclosure.

Key Features:

- ❑ Dedicated Ring Power IN and OUT Isolators.
- ❑ Compatible with Copper (Cu) or Aluminium (Al) 2c Feeder Cables up to 120mm².
- ❑ Easy cable installation with Magplate sliding split-able Gland Plate.
- ❑ Two Switched and Fused Output Functional Supplies.
- ❑ Functional Supply Fuse Carriers BS88.
- ❑ Compliant to Network Rail specification NR/L2/ELP/27409 Issue 2.
- ❑ Dimensions W=498mm x H=346mm x D=259mm.
- ❑ Weight = 18Kg.



Contact us to order or get more info

Call us on **01752 969321**

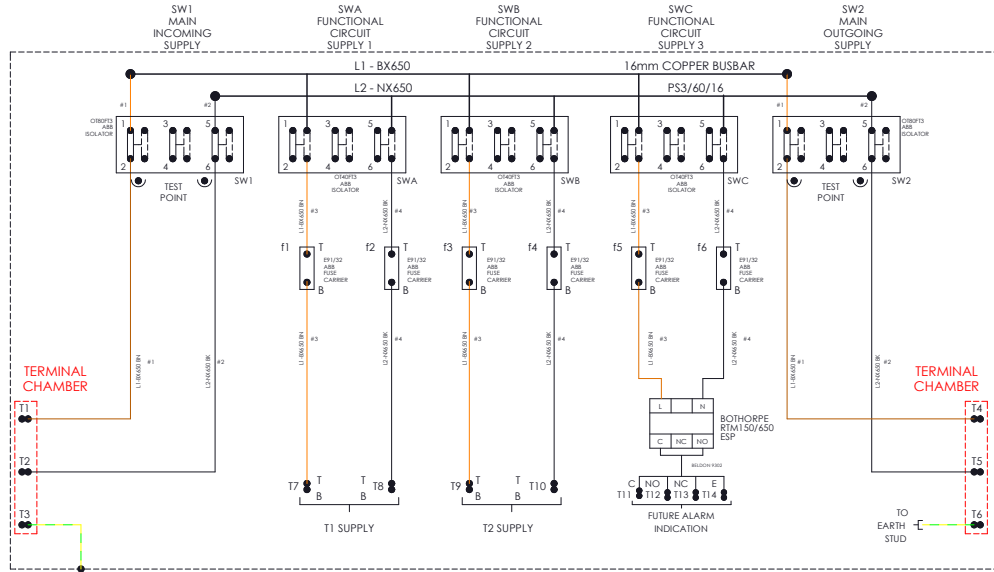
Alternately you can fill out *our online form*



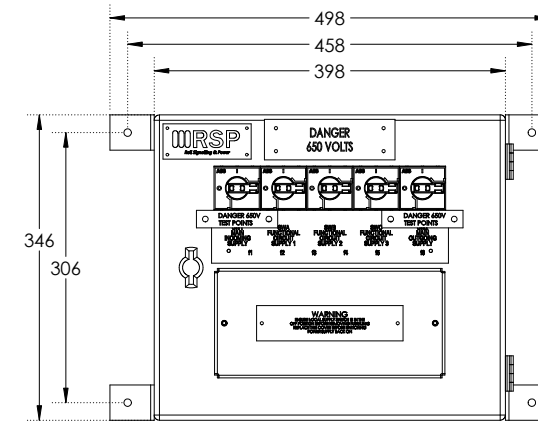
FSP01/02 - Type 20 Class 1

FSP02 Type 20SS

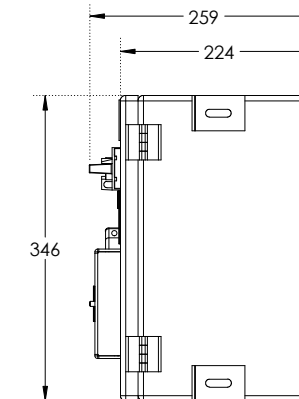
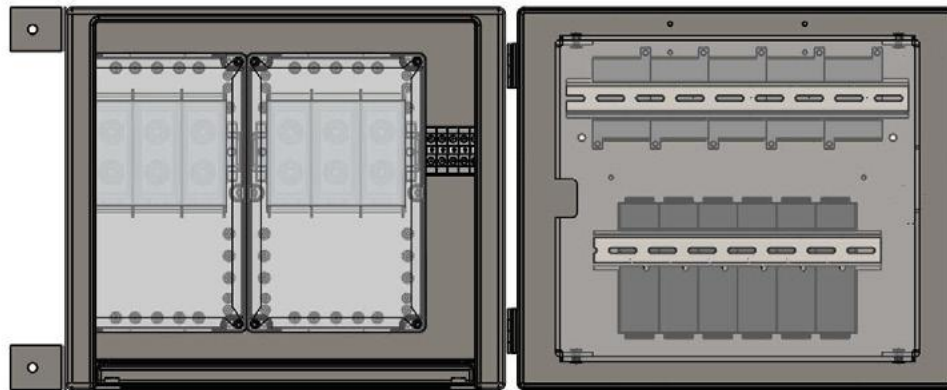
WIRING DIAGRAM



DIMENSIONING



INTERNAL VIEW





FSP01/02 - Type 21 Class 1

FSP01/02 Switchgear Assembly - Type 21 Class 1

- ❑ Railway Cat No. 092/000297.
- ❑ RSP Part No. DLLF2S21.
- ❑ Class I Distribution Enclosure for 650V Signalling Systems.
- ❑ Robust stainless steel enclosure.
- ❑ Surge Arrestor Protection provided.

Key Features:

- ❑ Dedicated Ring Power IN and OUT Isolators.
- ❑ Compatible with Copper (Cu) or Aluminium (Al) 2c Feeder Cables up to 120mm².
- ❑ Easy cable installation with Magplate sliding split-able Gland Plate.
- ❑ Three Switched & Fused Output Functional Supplies.
- ❑ Functional Supply Fuse Carriers BS88.
- ❑ Compliant to Network Rail specification NR/L2/ELP/27409 Issue 2.
- ❑ Dimensions W=498mm x H=346mm x D=259mm.
- ❑ Weight = 18Kg.



Contact us to order or get more info

Call us on **01752 969321**

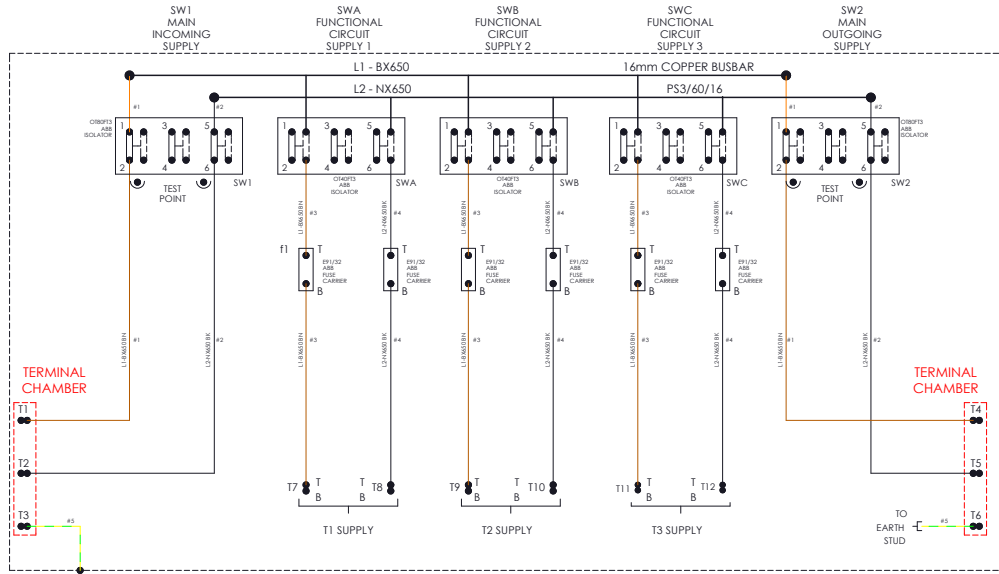
Alternately you can fill out *our online form*



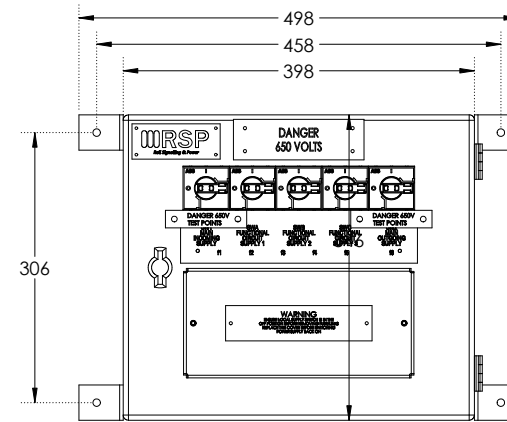
FSP01/02 - Type 21 Class 1

FSP02 Type 21SS

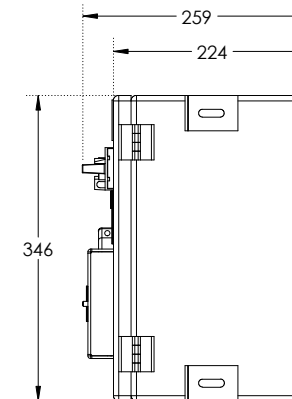
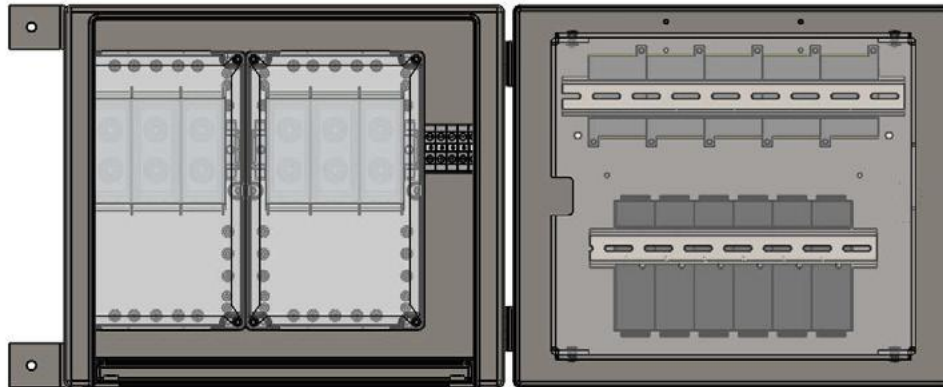
WIRING DIAGRAM



DIMENSIONING



INTERNAL VIEW



FSP01/02 - Type 20

FSP01/02 Switchgear Assembly - Type 20

- Railway Cat No. 054/213902.
- RSP Part No. DLLF2P20-02.
- Class II Distribution Enclosure for 650V Signalling Systems.
- Surge Arrestor Protection provided.

Key Features:

- Dedicated Ring Power IN and OUT Isolators.
- Compatible with Copper (Cu) or Aluminium (Al) 2c Feeder Cables up to 120mm².
- Easy cable installation with Magplate sliding split-able Gland Plate.
- Two Switched and Fused Output Functional Supplies.
- Functional Supply Fuse Carriers IEC60269 (ABB 10x38mm).
- Compliant to Network Rail specification NR/L2/ELP/27409 Issue 2.
- Dimensions W=506mm x H=400mm x D=233mm.
- Weight = 13.5Kg.



Contact us to order or get more info

Call us on **01752 969321**

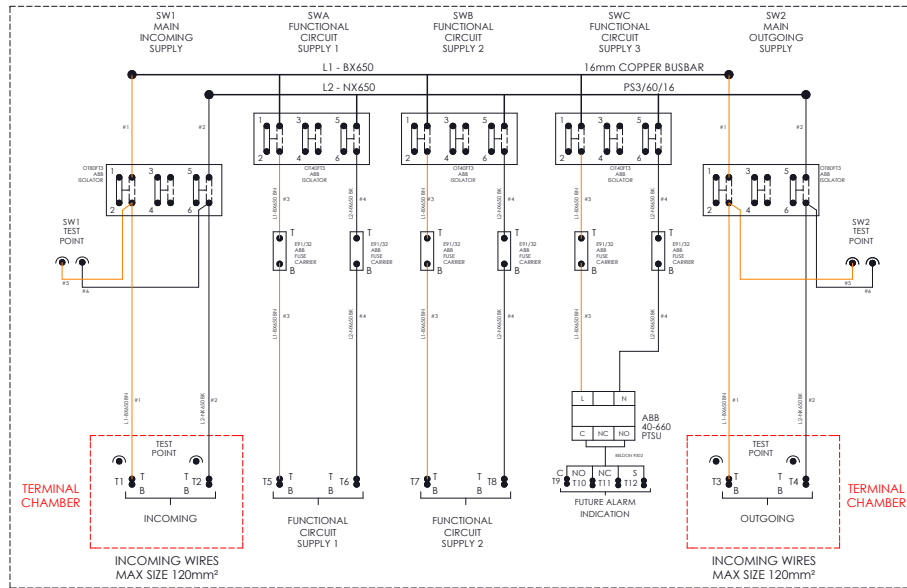
Alternately you can fill out *our online form*



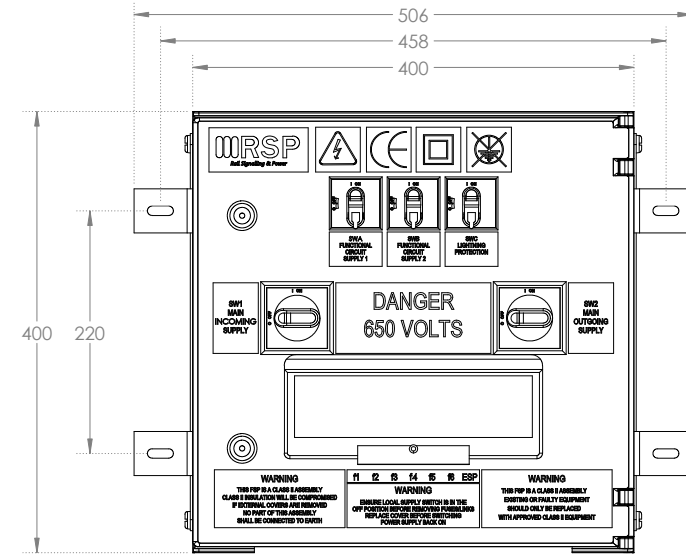
FSP01/02 - Type 20

FSP02 TYPE 20

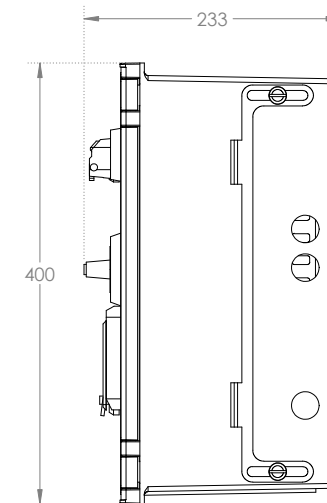
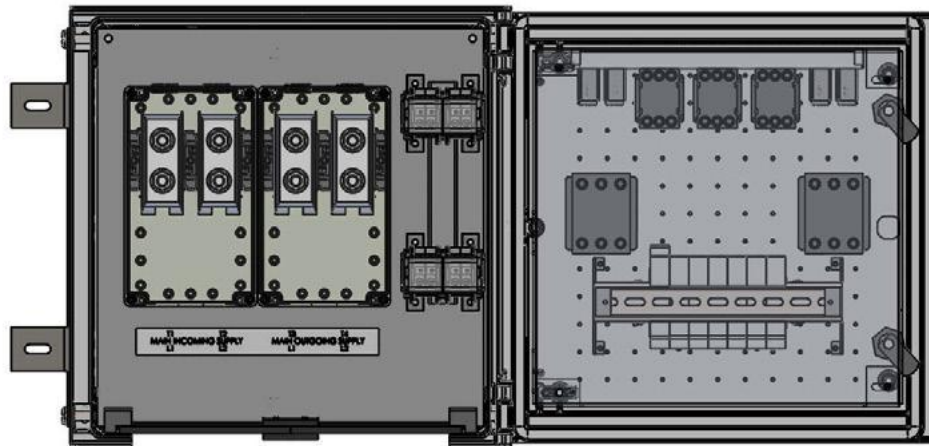
WIRING DIAGRAM



DIMENSIONING



INTERNAL VIEW



FSP01/02 - Type 21

FSP01/02 Switchgear Assembly - Type 21

- Railway Cat No. 054/213903.
- RSP Part No. DLLF2P21-02.
- Class II Distribution Enclosure for 650V Signalling Systems.

Key Features:

- Dedicated Ring Power IN and OUT Isolators.
- Compatible with Copper (Cu) or Aluminium (Al) 2c Feeder Cables up to 120mm².
- Easy cable installation with Magplate sliding split-able Gland Plate.
- Three Switched & Fused Output Functional Supplies.
- Functional Supply Fuse Carriers IEC60269 (ABB 10x38mm).
- Compliant to Network Rail specification NR/L2/ELP/27409 Issue 2.
- Dimensions W=506mm x H=400mm x D=233mm.
- Weight = 13.5Kg.



Contact us to order or get more info

Call us on **01752 969321**

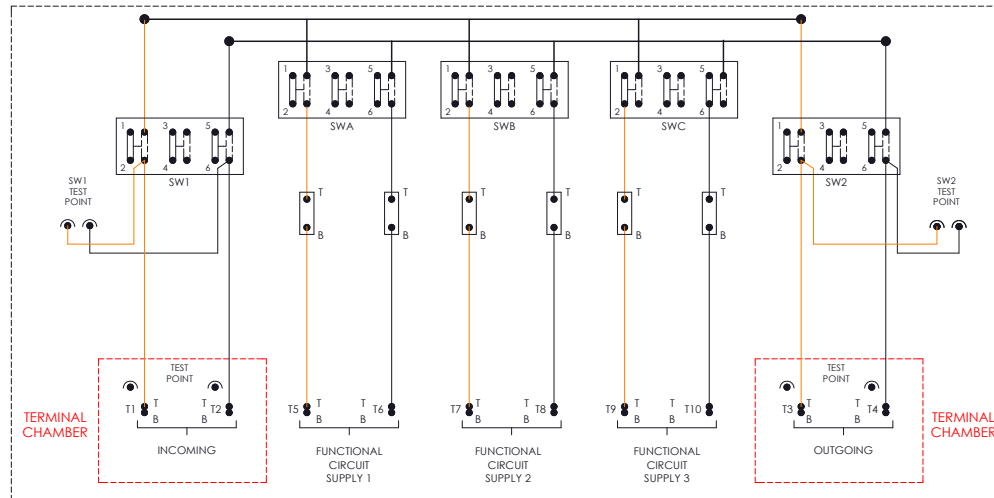
Alternately you can fill out *our online form*



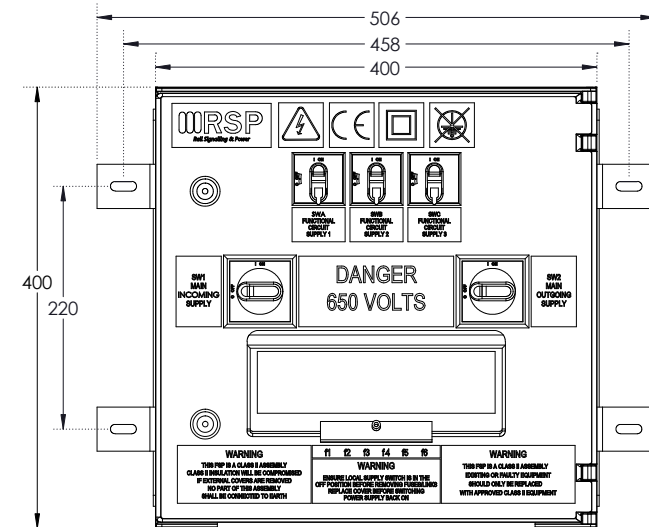
FSP01/02 - Type 21

FSP02 Type 21

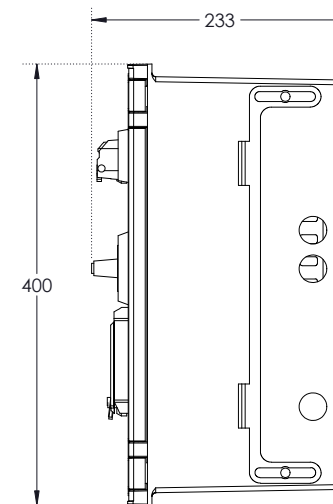
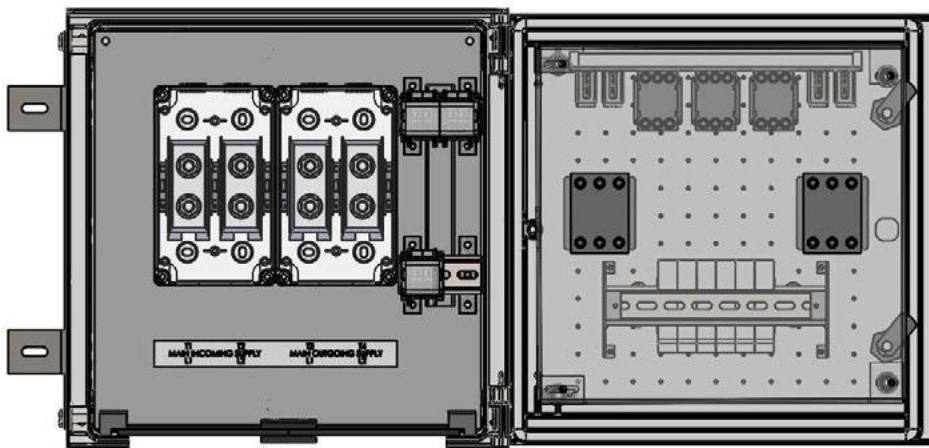
WIRING DIAGRAM



DIMENSIONING



INTERNAL VIEW



FSP01/02 - Type 22

FSP01/02 Switchgear Assembly - Type 22

- Railway Cat No. 054/213904.
- RSP Part No. DLLF2P22-02.
- Class II Distribution Enclosure for 650V Signalling Systems.
- Labelled for use in 240V systems.

Key Features:

- Dedicated Ring Power IN and OUT Isolators.
- Compatible with Copper (Cu) or Aluminium (Al) 2c Feeder Cables up to 120mm².
- Easy cable installation with Magplate sliding split-able Gland Plate.
- Three Switched & Fused Output Functional Supplies.
- Functional Supply Fuse Carriers IEC60269 (ABB 10x38mm).
- Compliant to Network Rail specification NR/L2/ELP/27409 Issue 2.
- Dimensions W=506mm x H=400mm x D=233mm.
- Weight = 13.5Kg.



Contact us to order or get more info

Call us on **01752 969321**

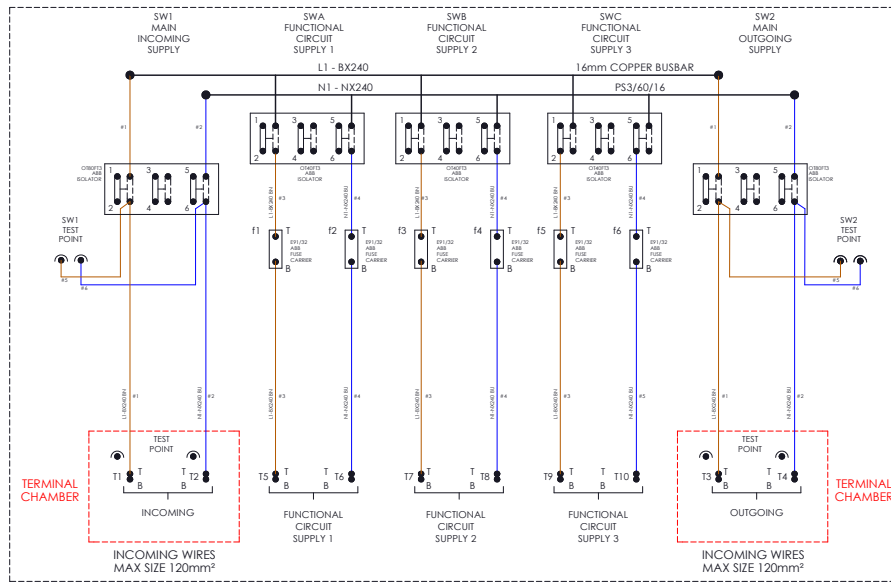
Alternately you can fill out *our online form*



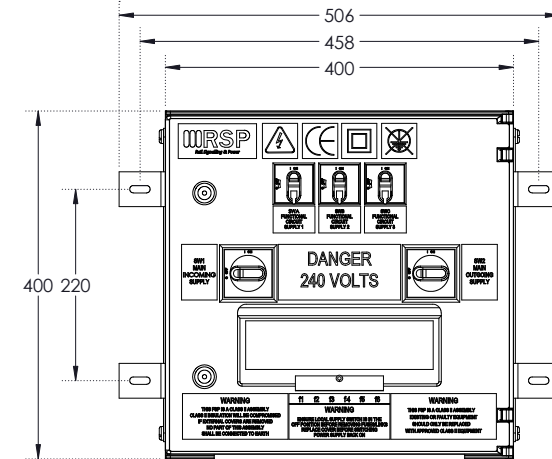
FSP01/02 - Type 22

FSP02 TYPE 22

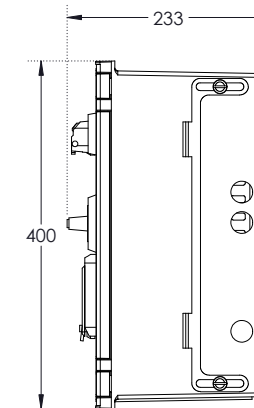
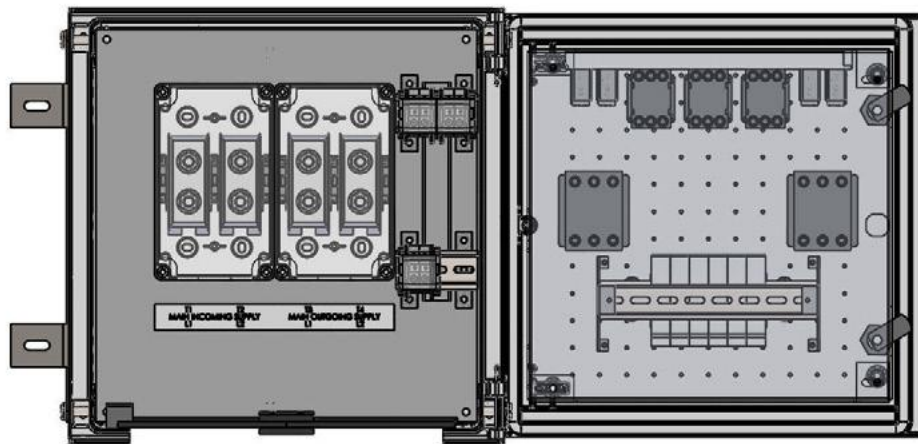
WIRING DIAGRAM



DIMENSIONING



INTERNAL VIEW





FSP03

- Network Rail Product Acceptance Certificate PA05/07053.
- Compliant to NR/L2/SIG/ELP/27409 Issue 2.
- All FSP03s come fitted with RSP's unique removable and split-able gland plates.
- All FSP03 cases are fully compatible with all NWR Product Accepted Automatic Reconfiguration Systems and can be supplied in yellow banded cases made from mild or stainless steel.

	FSP03 Assemblies		FSP03 PRODUCTS							
	FSP03 Type 32 DLF3P32-02	FSP03 Type 32C DLF3P32C	FSP03 Type 30 DLF3P30-02	FSP03 Type 31 DLF3P31-02	FSP03 Type 33 DLF3P33-02	FSP03 Type 34 DLF3P34-02	FSP03 Type 35 DLF3P35-02	FSP03 Type 36 DLF3P36-02	FSP03 Type 37 DLF3P37-02	FSP03 Type 32 Surge Suppressor Module DLF3P32SM
Class	II	II	II	II	II	II	II	II	II	II
Feeder Switches	2 - Mains 3 - ARS	2 - Mains 3 - ARS	2 - Mains 3 - ARS	N/A	N/A	N/A	N/A	N/A	N/A	N/A
Functional Supplies	Dependant on functional FSP03 Module selected		2	4	4	2	2	2	4	N/A
Feeder Cable Size (Cu or Al)	16-120mm ²	16-120mm ²	16-120mm ²	N/A	N/A	N/A	N/A	N/A	N/A	N/A
Type of Fuses	IEC	IEC	IEC	IEC	IEC	IEC	IEC	IEC	IEC	IEC
Dimensions (mm)	Full Width Case	Half Width Case	W=506 H=800 D=233	W=506 H=800 D=228	W=506 H=800 D=228	W=506 H=800 D=228	W=506 H=800 D=228	W=506 H=400 D=233	W=506 H=400 D=228	W=100 H=150 D=99
Weight			18.75Kg	18.75Kg	18.75Kg	18.75Kg	18.75Kg	13.50Kg	13.50Kg	1Kg
Railway Cat No.	054/213905	054/213906	054/213907	054/213908	054/213909	054/213910	054/213911	054/213912	054/213913	054/213914
Additional Comments	Optional Heater and Light available	Optional Heater and Light available		Primary and Secondary fuses		Primary and Secondary fuses		Including termination facility for one spur supply		A single surge suppressor in its own housing



FSP03 - Type 30

FSP03 Switchgear Assembly - Type 30

- Railway Cat No. 054/213907.
- RSP Part No. DLLF3P30-02.
- Class II Distribution Enclosure for 650V Signalling Systems.
- FSP03 Main Distribution Module.

Key Features:

- Dedicated Ring Power IN and OUT Isolators.
- Compatible with Copper (Cu) or Aluminium (Al) 2c Feeder Cables up to 120mm².
- Easy cable installation with Magplate sliding split-able Gland Plate.
- Functional Supply Fuse Carriers IEC60269 (ABB 10x38mm).
- Compliant to Network Rail specification NR/L2/ELP/27409 Issue 2.
- Dimensions W=506mm x H=800mm x D=233mm.
- Weight = 18.75Kg.

Support

All products come with a standard 12 month warranty with an option to extend if required and a minimum 35 year life expectancy. RSP has an experienced team on hand to provide ongoing support pre, during and after sales.



Contact us to order or get more info

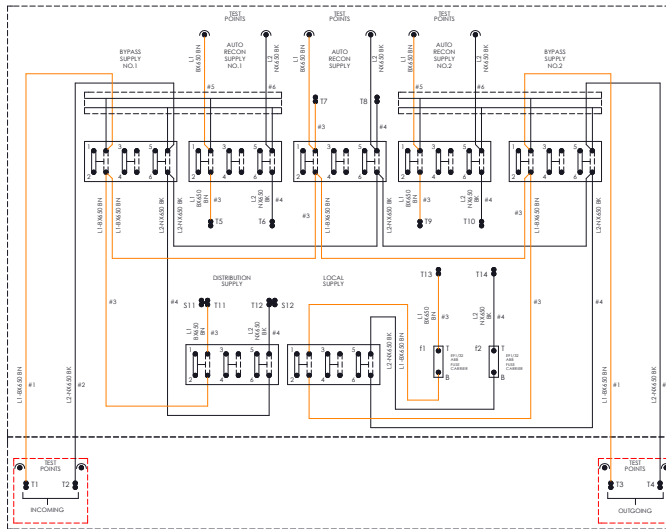
Call us on **01752 969321**

Alternately you can fill out *our online form*



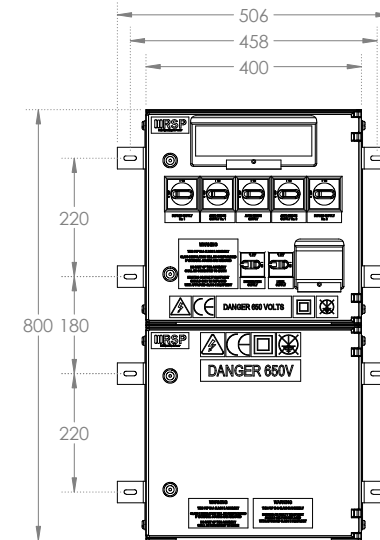
FSP03 - Type 30

FSP03 TYPE 30

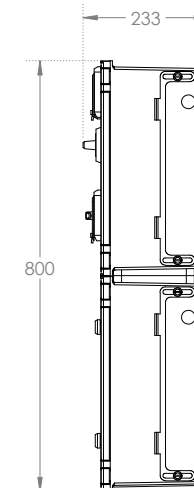
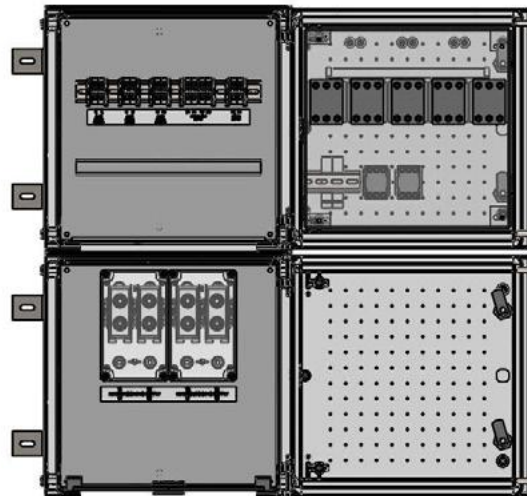


WIRING DIAGRAM

DIMENSIONING



INTERNAL VIEW



FSP03 - Type 31

FSP03 Switchgear Assembly - Type 31

- Railway Cat - No. 054/213908.
- RSP Part - No. DLLF3P31-02.
- Class II Distribution Enclosure for 650V Signalling Systems.
- FSP03 Functional Supply Module with Primary and Secondary fuses.

Key Features:

- Four Switched & Fused Output Functional Supplies.
- Easy cable installation with Magplate sliding split-able Gland Plate.
- Functional Supply Fuse Carriers IEC60269 (ABB 10x38mm).
- Compliant to Network Rail specification NR/L2/ELP/27409 Issue 2.
- Dimensions W=506mm x H=800mm x D=228mm.
- Weight = 18.75Kg.

Support

All products come with a standard 12 month warranty with an option to extend if required and a minimum 35 year life expectancy. RSP has an experienced team on hand to provide ongoing support pre, during and after sales.



Contact us to order or get more info

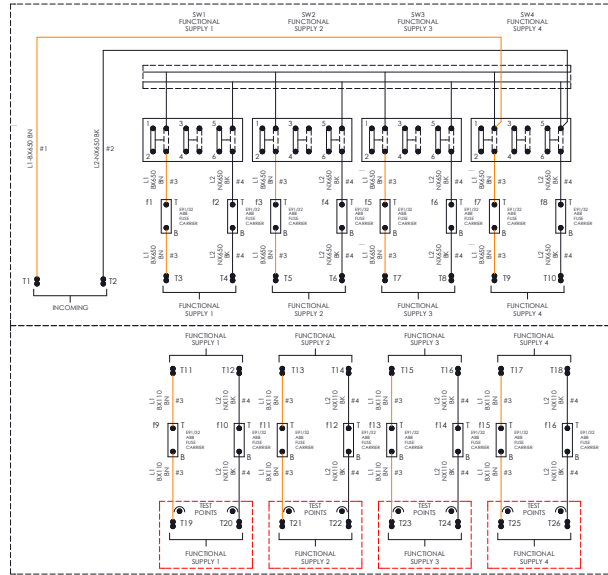
Call us on **01752 969321**

Alternately you can fill out *our online form*



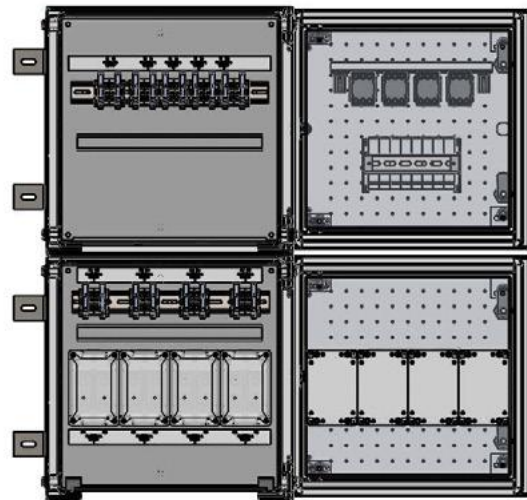
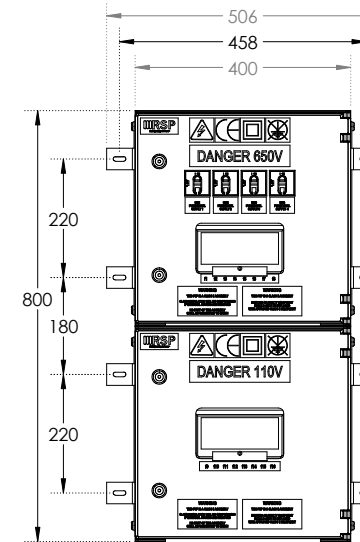
FSP03 - Type 31

FSP03 Type 31

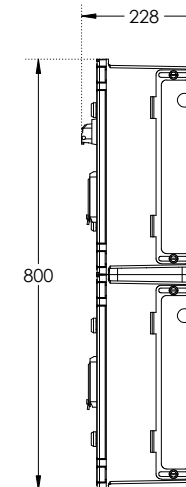


WIRING DIAGRAM

DIMENSIONS



INTERNAL VIEW



FSP03 - Type 32

FSP03 Full Width Location Case Assembly

- ❑ Railway Cat No. 054/213905.
- ❑ RSP Part No. DLLF3P32-02.
- ❑ Class II Distribution Enclosure for 650V Signalling Systems.
- ❑ Full Width Case - Optional Heater and Light available.

When ordering a complete case a **Type 30 Distribution Module** is supplied as standard as well as one other **FSP03 Functional Supply Module** which is to be specified by the client.

Key Features:

- ❑ Dedicated Ring Power IN and OUT Isolators.
- ❑ Compatible with Copper (Cu) or Aluminium (Al) 2c Feeder Cables up to 120mm².
- ❑ Easy cable installation with Magplate sliding split-able Gland Plate.
- ❑ Functional Supply Fuse Carriers IEC60269 (ABB 10x38mm).
- ❑ Compliant to Network Rail specification NR/L2/ELP/27409 Issue 2.
- ❑ Dimensions W=1022mm x H=1861mm x D=558mm.
- ❑ Weight = Dependant on final design.



Need a tailored design?

Our IRSE licensed designers can give you the bespoke solution you need. Call us on **01752 969321** or you can fill out *our online form*

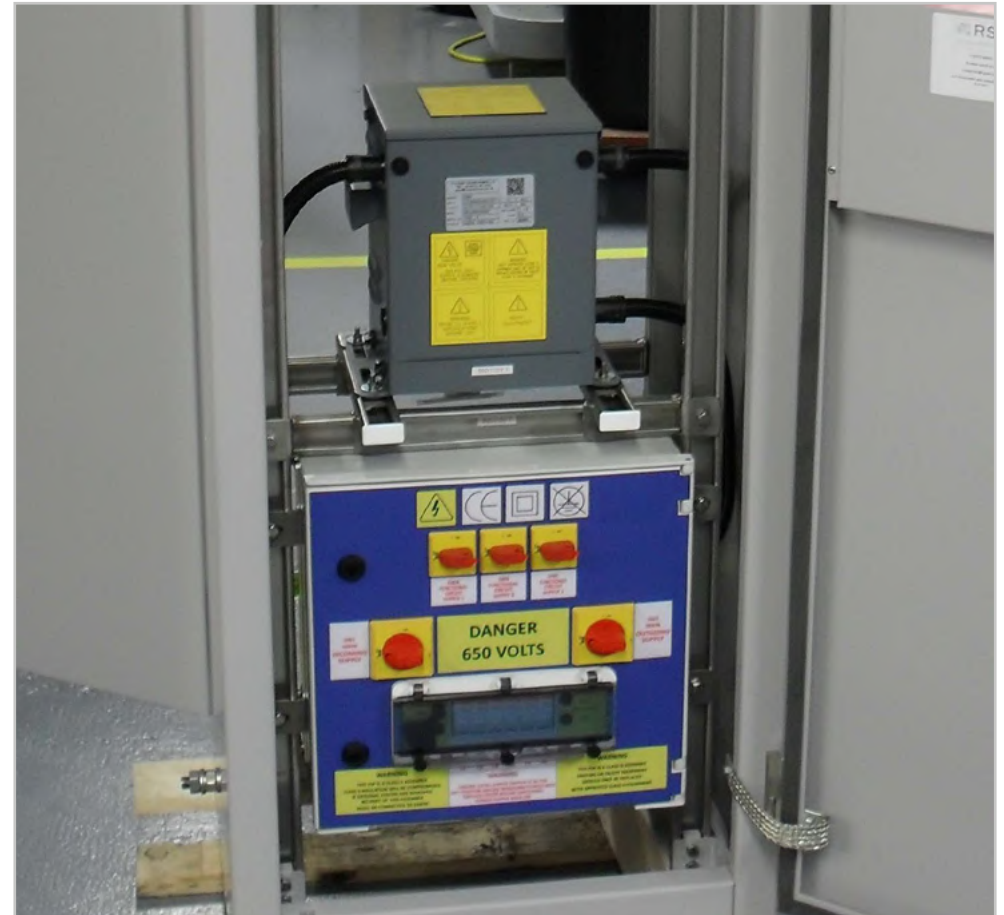
FSP03 Half Width Location Case Assembly

- ❑ Railway Cat No. 054/213906.
- ❑ RSP Part No. DLLF3P32C.
- ❑ Class II Distribution Enclosure for 650V Signalling Systems.
- ❑ Half Width Case - Optional Heater and Light available.

When ordering a complete case a Type 30 Distribution Module is supplied as standard as well as one other FSP03 Functional Supply Module which is to be specified by the client.

Key Features:

- ❑ Dedicated Ring Power IN and OUT Isolators.
- ❑ Compatible with Copper (Cu) or Aluminium (Al) 2c Feeder Cables up to 120mm².
- ❑ Easy cable installation with Magplate sliding split-able Gland Plate.
- ❑ Functional Supply Fuse Carriers IEC60269 (ABB 10x38mm).
- ❑ Compliant to Network Rail specification NR/L2/ELP/27409 Issue 2.
- ❑ Dimensions W=588mm x H=1861mm x D=558mm.
- ❑ Weight = Dependant on final design.



Need a tailored design?

Our IRSE licensed designers can give you the bespoke solution you need. Call us on **01752 969321** or you can fill out *our online form*

FSP03 - Type 33

FSP03 Switchgear Assembly - Type 33

- ❑ Railway Cat - No. 054/213909.
- ❑ RSP Part - No. DLLF3P33-02.
- ❑ Class II Distribution Enclosure for 650V Signalling Systems.
- ❑ FSP03 Functional Supply Module.

Key Features:

- ❑ Four Switched & Fused Output Functional Supplies.
- ❑ Easy cable installation with Magplate sliding split-able Gland Plate.
- ❑ Functional Supply Fuse Carriers IEC60269 (ABB 10x38mm).
- ❑ Compliant to Network Rail specification NR/L2/ELP/27409 Issue 2.
- ❑ Dimensions W=506mm x H=800mm x D=228mm.
- ❑ Weight = 18.75Kg.

Support

All products come with a standard 12 month warranty with an option to extend if required and a minimum 35 year life expectancy. RSP has an experienced team on hand to provide ongoing support pre, during and after sales.



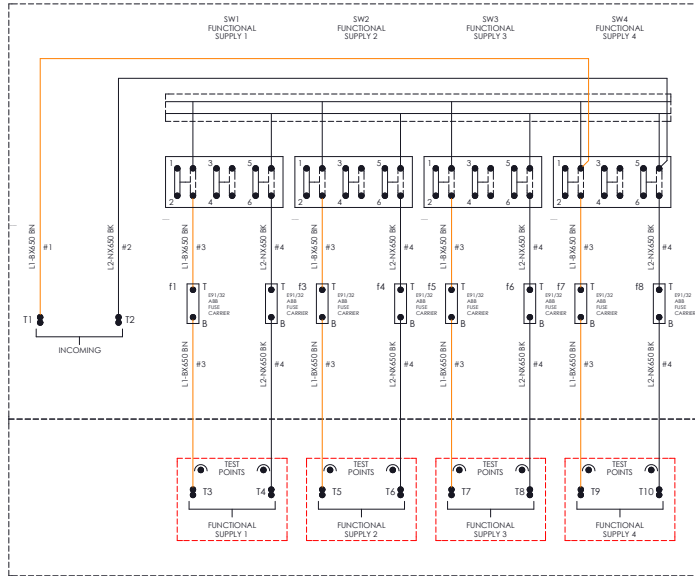
Need a tailored design?

Our IRSE licensed designers can give you the bespoke solution you need. Call us on **01752 969321** or you can fill out *our online form*

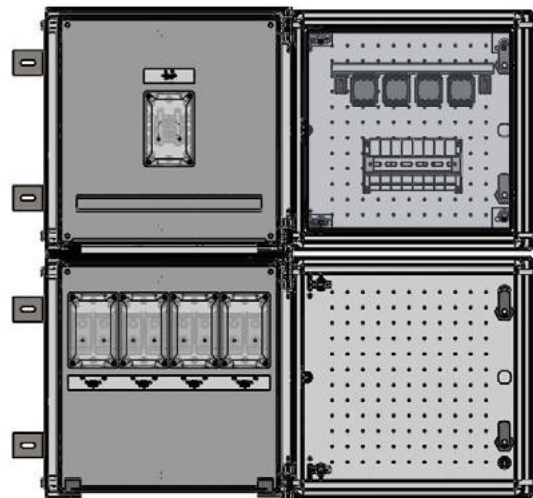
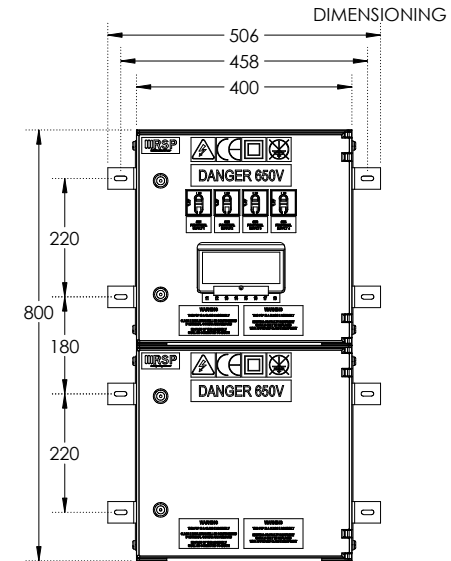


FSP03 - Type 33

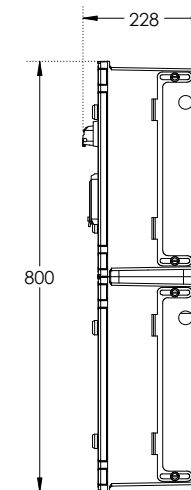
FSP03 Type 33



WIRING DIAGRAM



INTERNAL VIEW





FSP03 - Type 34

FSP03 Switchgear Assembly - Type 34

- Railway Cat - No. 054/213910.
- RSP Part - No. DLLF3P34-02.
- Class II Distribution Enclosure for 650V Signalling Systems.
- FSP03 Functional Supply Module with Primary and Secondary fuses.

Key Features:

- Two Switched and Fused Output Functional Supplies.
- Easy cable installation with Magplate sliding split-able Gland Plate.
- Functional Supply Fuse Carriers IEC60269 (ABB 10x38mm).
- Compliant to Network Rail specification NR/L2/ELP/27409 Issue 2.
- Dimensions W=506mm x H=800mm x D=228mm.
- Weight = 18.75Kg.

Support

All products come with a standard 12 month warranty with an option to extend if required and a minimum 35 year life expectancy. RSP has an experienced team on hand to provide ongoing support pre, during and after sales.



Contact us to order or get more info

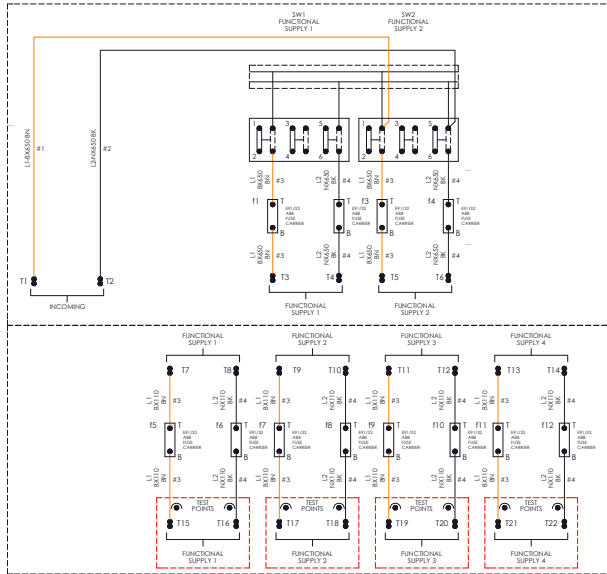
Call us on **01752 969321**

Alternately you can fill out *our online form*



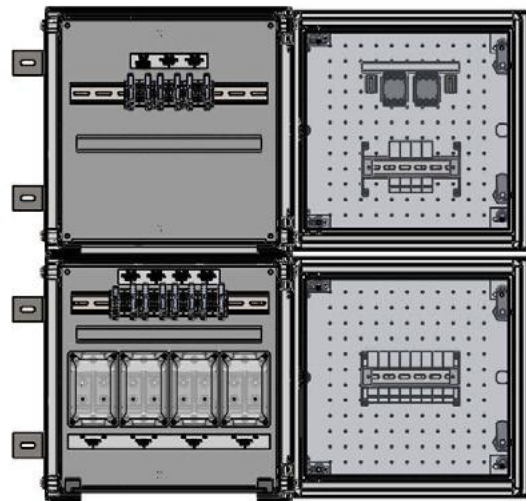
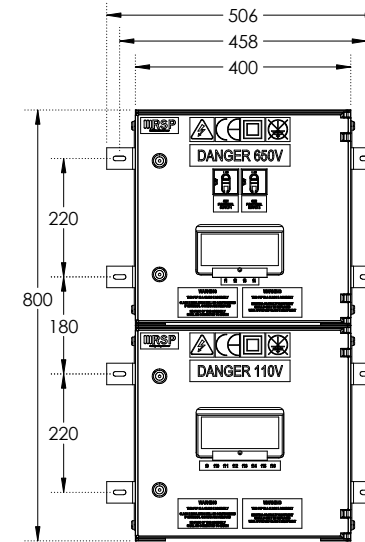
FSP03 - Type 34

FSP03 TYPE 34

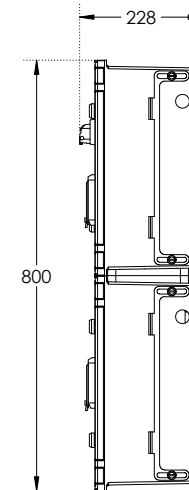


WIRING DIAGRAM

DIMENSIONING



INTERNAL VIEW





FSP03 - Type 35

FSP03 Switchgear Assembly - Type 35

- Railway Cat - No. 054/213911.
- RSP Part - No. DLLF3P35-02.
- Class II Distribution Enclosure for 650V Signalling Systems.
- FSP03 Functional Supply Module.

Key Features:

- Two Switched and Fused Output Functional Supplies.
- Easy cable installation with Magplate sliding split-able Gland Plate.
- Functional Supply Fuse Carriers IEC60269 (ABB 10x38mm).
- Compliant to Network Rail specification NR/L2/ELP/27409 Issue 2.
- Dimensions W=506mm x H=800mm x D=228mm.
- Weight = 18.75Kg.

Support

All products come with a standard 12 month warranty with an option to extend if required and a minimum 35 year life expectancy. RSP has an experienced team on hand to provide ongoing support pre, during and after sales.



Contact us to order or get more info

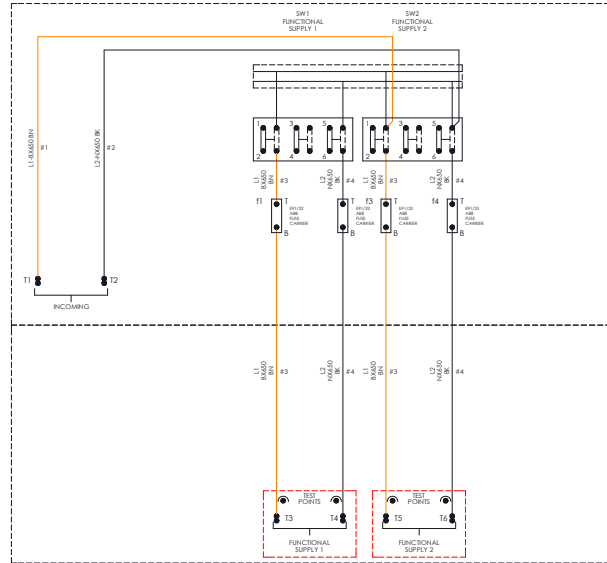
Call us on **01752 969321**

Alternately you can fill out *our online form*



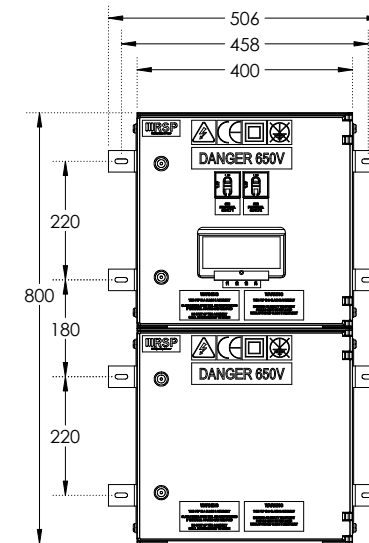
FSP03 - Type 35

FSP04 Type 35

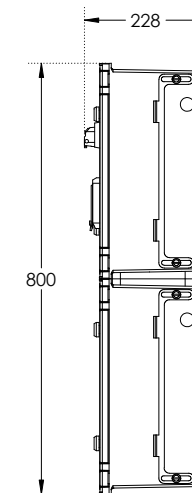
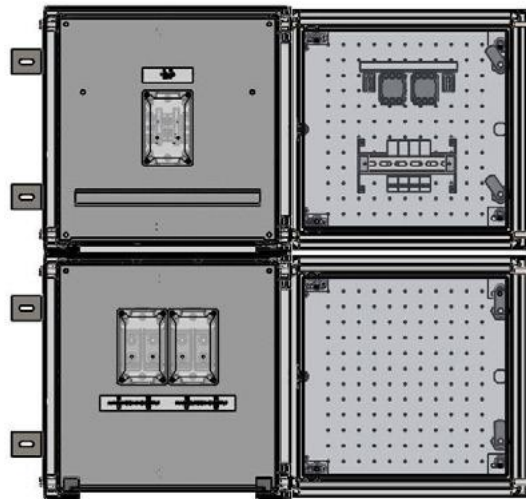


WIRING DIAGRAM

DIMENSIONING



INTERNAL VIEW





FSP03 - Type 36

FSP03 Switchgear Assembly - Type 36

- Railway Cat - No. 054/213912.
- RSP Part - No. DLLF3P36-02.
- Class II Distribution Enclosure for 650V Signalling Systems.
- FSP03 Functional Supply Module including termination facility for one spur supply.

Key Features:

- Two Switched and Fused Output Functional Supplies.
- Easy cable installation with Magplate sliding split-able Gland Plate.
- Functional Supply Fuse Carriers IEC60269 (ABB 10x38mm).
- Compliant to Network Rail specification NR/L2/ELP/27409 Issue 2.
- Dimensions W=506mm x H=400mm x D=233mm.
- Weight = 13.50Kg.

Support

All products come with a standard 12 month warranty with an option to extend if required and a minimum 35 year life expectancy. RSP has an experienced team on hand to provide ongoing support pre, during and after sales.



Contact us to order or get more info

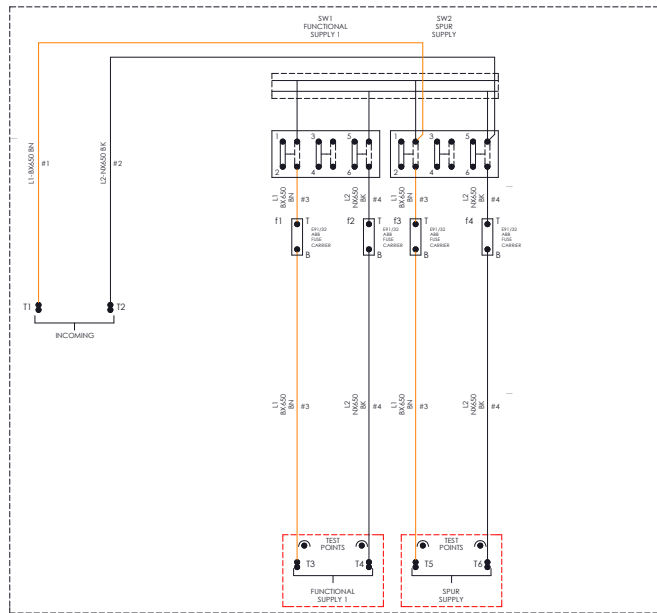
Call us on **01752 969321**

Alternately you can fill out *our online form*



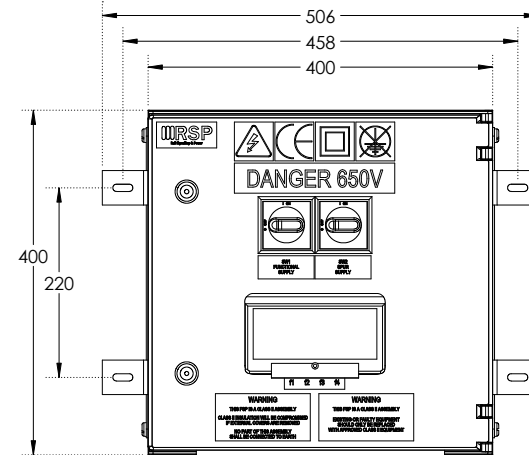
FSP03 - Type 36

FSP03 Type 36

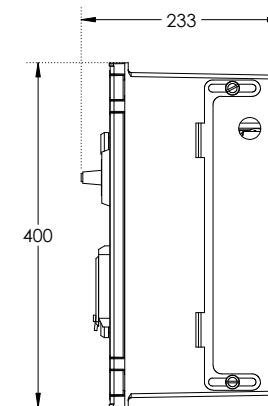
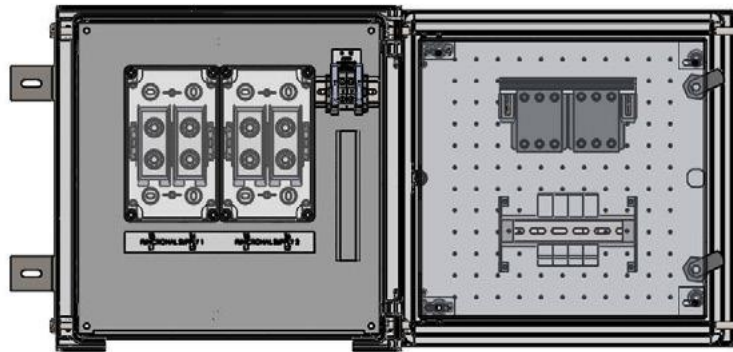


WIRING DIAGRAM

DIMENSIONING



INTERNAL VIEW



FSP03 - Type 37

FSP03 Switchgear Assembly - Type 37

- Railway Cat No. 054/213913.
- RSP Part No. DLLF3P37-02.
- Class II Distribution Enclosure for 650V Signalling Systems.
- FSP03 Functional Supply Module.

Key Features:

- Four Switched & Fused Output Functional Supplies.
- Easy cable installation with Magplate sliding split-able Gland Plate.
- Functional Supply Fuse Carriers IEC60269 (ABB 10x38mm).
- Compliant to Network Rail specification NR/L2/ELP/27409 Issue 2.
- Dimensions W=506mm x H=400mm x D=228mm.
- Weight = 13.50Kg.

Support

All products come with a standard 12 month warranty with an option to extend if required and a minimum 35 year life expectancy. RSP has an experienced team on hand to provide ongoing support pre, during and after sales.



Contact us to order or get more info

Call us on **01752 969321**

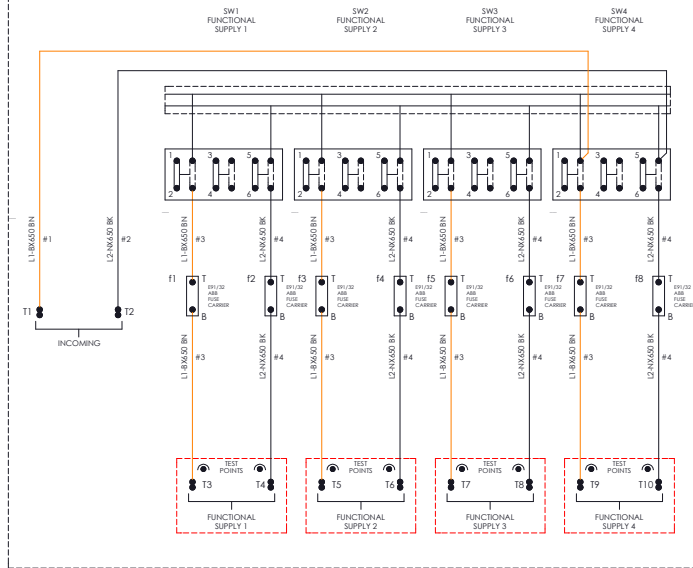
Alternately you can fill out *our online form*



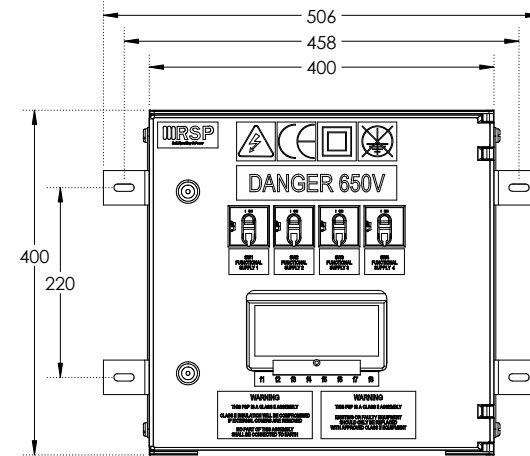
FSP03 - Type 37

FSP03 Type 37

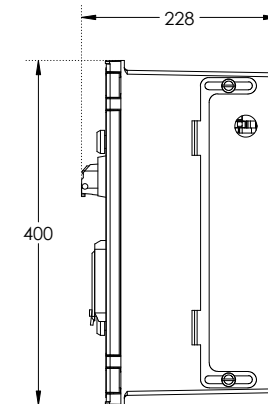
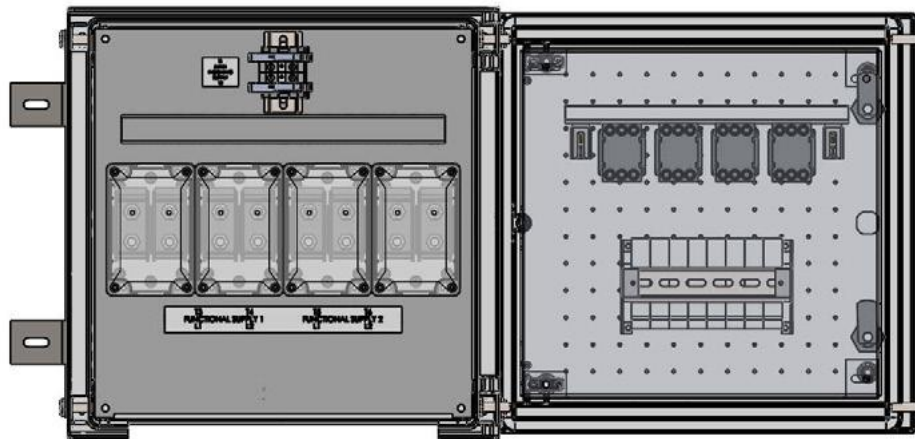
WIRING DIAGRAM



DIMENSIONING



INTERNAL VIEW



FSP03 - Type 32SM

FSP03 Switchgear Assembly - Type 32SM

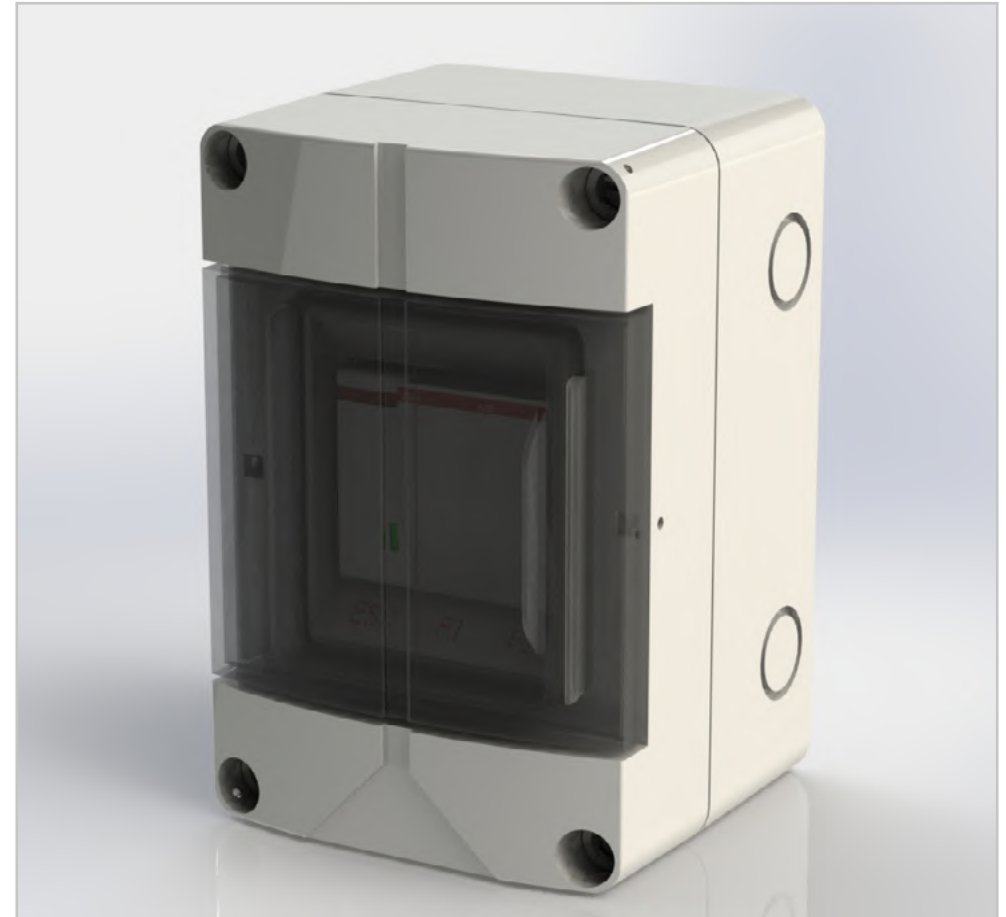
- ❑ Railway Cat No. 054/213914.
- ❑ RSP Part No. DLLF3P32SM.
- ❑ Class II Distribution Enclosure for 650V Signalling Systems.
- ❑ A single surge suppressor in its own housing.

Key Features:

- ❑ Dedicated Surge Arrestor Module.
- ❑ Functional Supply Fuse Carriers IEC60269 (ABB 10x38mm).
- ❑ Compliant to Network Rail specification NR/L2/ELP/27409 Issue 2.
- ❑ Dimensions W=100mm x H=150mm x D=99mm.
- ❑ Weight = 1Kg.

Support

All products come with a standard 12 month warranty with an option to extend if required and a minimum 35 year life expectancy. RSP has an experienced team on hand to provide ongoing support pre, during and after sales.



Contact us to order or get more info

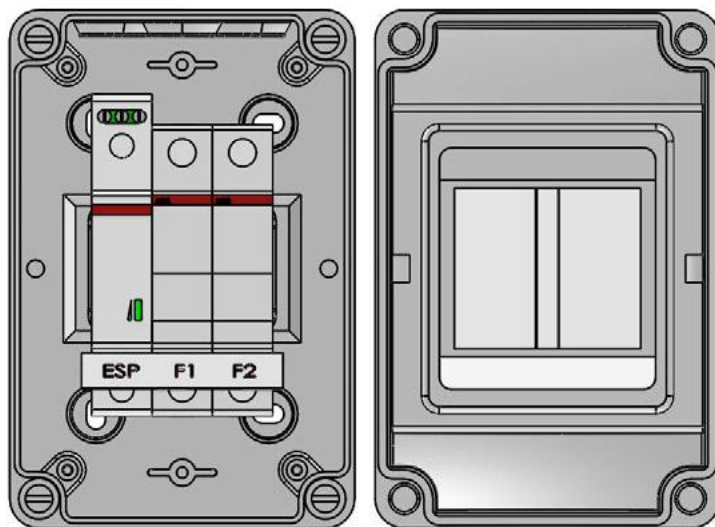
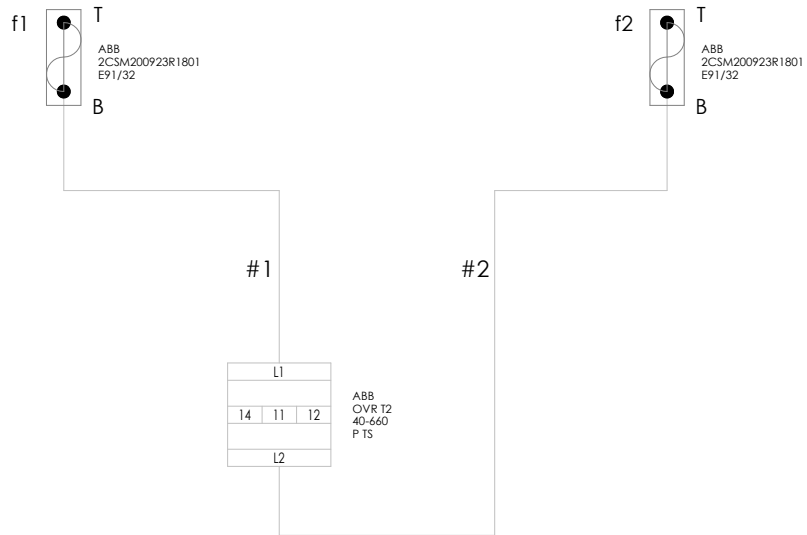
Call us on **01752 969321**

Alternately you can fill out *our online form*

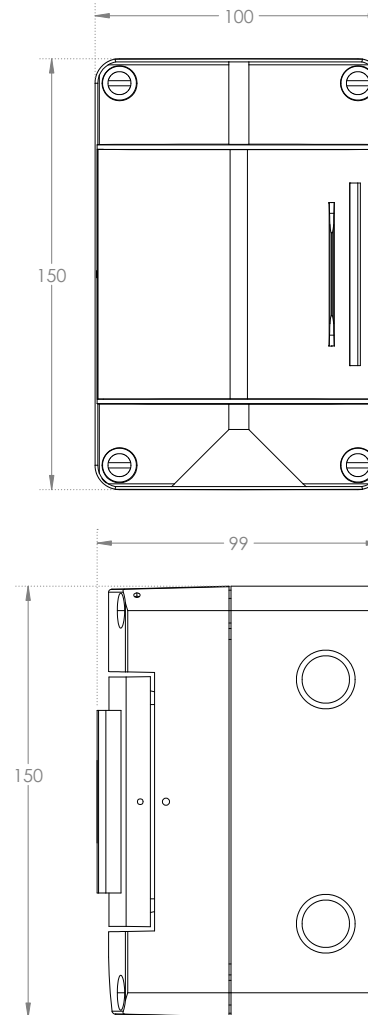


FSP03 - Type 32SM

FSP03 Type 32 SM



DIMENSIONING





FSP04

- Network Rail Product Acceptance Certificate PA05/07058.
- Compliant to NR/L2/SIGELP27409 Issue 2.
- All FSP04s come fitted with RSP's unique removable and split-able gland plates.
- Suitable for SIN119 Legacy Installation upgrades.

	FSP04 Type 01 DLLF4P01	FSP04 Type 02 DLLF4P02	FSP04 Type 03 DLLF4P03 DLLF2P20-02	FSP04 Type 04 DLLF4P04 DLLF2P21-02	FSP04 Type 05 DLLF4P05 DLLF2P22-02	FSP04 Type 06 DLLF4P06	FSP04 Type 07 DLLF4P07	FSP04 Type 08 DLLF4P08	FSP04 Type 09 DLLF4P09	FSP04 Type 10 DLLF4P10
Class	II	II	II	II	II	II	II	II	II	II
Feeder Switches	1	1	1	1	2	2	1	1	2	2
Functional Supplies	1	1	1	1	1	1	2	2	2	2
Feeder Cable Size (Cu or Al)	6-50mm ²	6-50mm ²	16-120mm ²	16-120mm ²	16-120mm ²	16-120mm ²	16-120mm ²	16-120mm ²	16-120mm ²	16-120mm ²
Type of Fuses	IEC	BS88	IEC	BS88	IEC	BS88	IEC	BS88	IEC	BS88
Dimensions (mm)	W=300 H=200 D=224	W=300 H=200 D=224	W=300 H=300 D=224	W=300 H=300 D=224	W=300 H=300 D=224	W=300 H=300 D=224	W=400 H=300 D=221	W=400 H=300 D=221	W=400 H=300 D=221	W=400 H=300 D=221
Weight	5Kg	5Kg	6Kg	6Kg	6Kg	6Kg	7.5Kg	7.5Kg	7.5Kg	7.5Kg
Railway Cat No.	092/002324	092/002325	092/002326	092/002327	092/002328	092/002329	092/002330	092/002331	092/002332	092/002333
Additional Comments									Functional supplies share a common fuse	Functional supplies share a common fuse

FSP04 - Type 01

FSP04 Switchgear Assembly - Type 01

- Railway Cat No. 092/002324.
- RSP Part No. DLLF4P01.
- Class II Distribution Enclosure for 650V Signalling Systems.

Key Features:

- Combined Ring Power IN/OUT Isolator.
- Compatible with Copper (Cu) or Aluminium (Al) Feeder Cables from 6-50mm².
- One Switched and Fused Output Functional Supply.
- Functional Supply Fuse Carriers IEC60269 (ABB 10x38mm).
- Compliant to Network Rail specification NR/L2/ELP/27409 Issue 2.
- Dimensions W=300mm x H=200mm x D=224mm.
- Weight = 5Kg.

Support

All products come with a standard 12 month warranty with an option to extend if required and a minimum 35 year life expectancy. RSP has an experienced team on hand to provide ongoing support pre, during and after sales.



Need a tailored design?

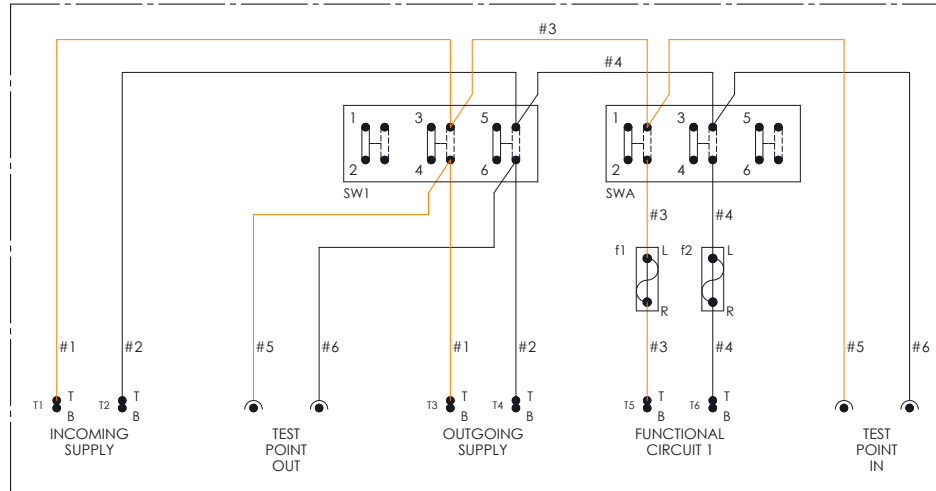
Our IRSE licensed designers can give you the bespoke solution you need. Call us on **01752 969321** or you can fill out *our online form*



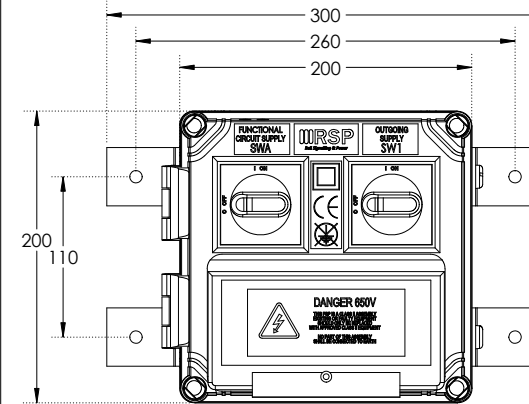
FSP04 - Type 01

FSP04 Type 01

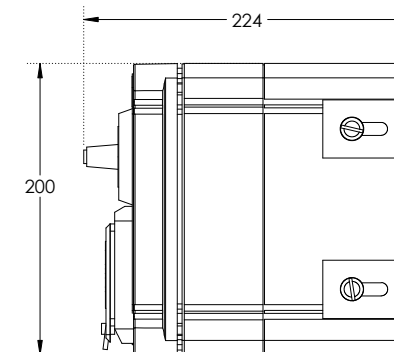
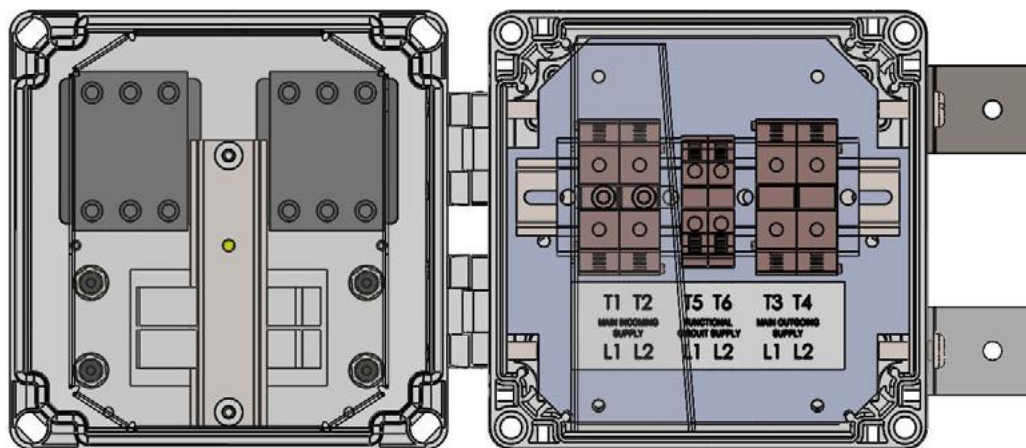
WIRING DIAGRAM



DIMENSIONING



INTERNAL VIEW



FSP04 - Type 02

FSP04 Switchgear Assembly - Type 02

- Railway Cat No. 092/002325.
- RSP Part No. DLLF4P02.
- Class II Distribution Enclosure for 650V Signalling Systems.

Key Features:

- Combined Ring Power IN/OUT Isolator.
- Compatible with Copper (Cu) or Aluminium (Al) Feeder Cables from 6-50mm².
- One Switched and Fused Output Functional Supply.
- Functional Supply Fuse Carriers BS88.
- Compliant to Network Rail specification NR/L2/ELP/27409 Issue 2.
- Dimensions W=300mm x H=200mm x D=224mm.
- Weight = 5Kg.

Support

All products come with a standard 12 month warranty with an option to extend if required and a minimum 35 year life expectancy. RSP has an experienced team on hand to provide ongoing support pre, during and after sales.



Contact us to order or get more info

Call us on **01752 969321**

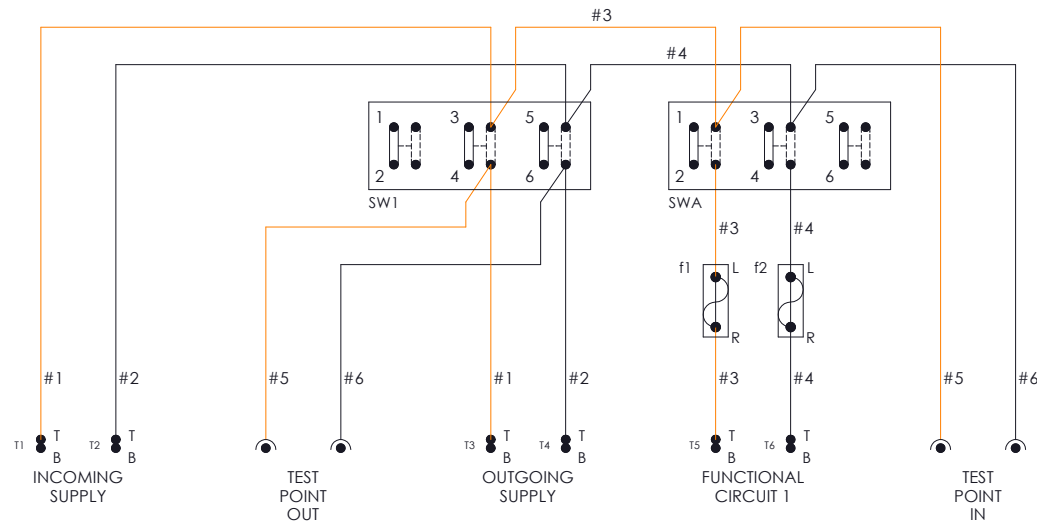
Alternately you can fill out *our online form*



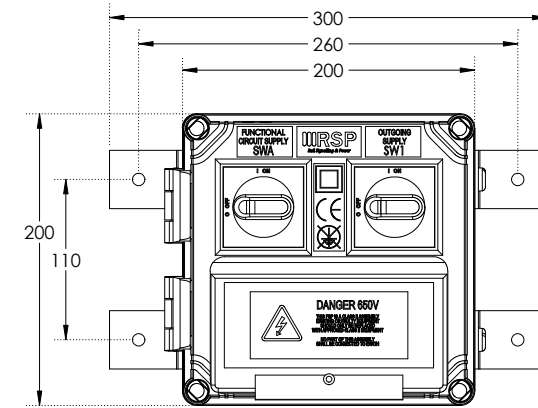
FSP04 - Type 02

FSP04 Type 02

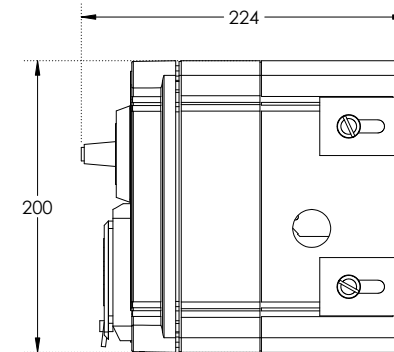
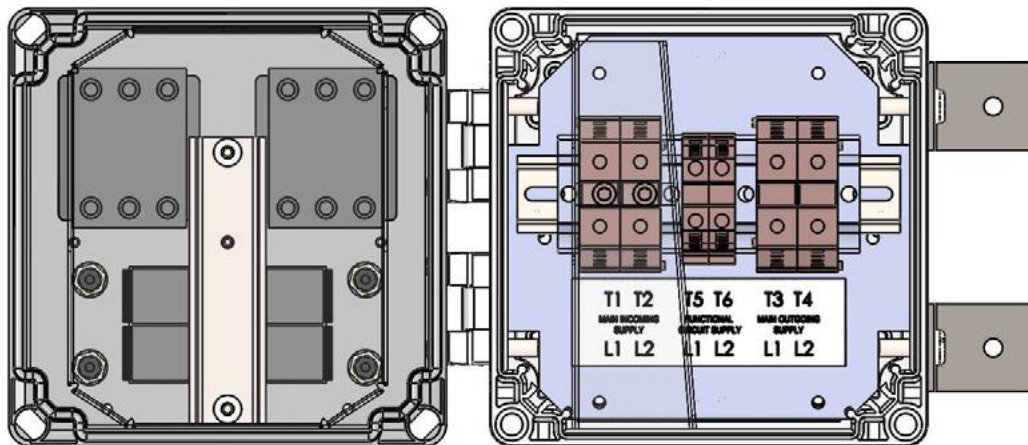
WIRING DIAGRAM



DIMENSIONING



INTERNAL VIEW



FSP04 - Type 03

FSP04 Switchgear Assembly - Type 03

- Railway Cat No. 092/002326.
- RSP Part No. DLLF4P03.
- Class II Distribution Enclosure for 650V Signalling Systems.

Key Features:

- Combined Ring Power IN/OUT Isolator.
- Compatible with Copper (Cu) or Aluminium (Al) Feeder Cables from 16-120mm².
- One Switched and Fused Output Functional Supply.
- Functional Supply Fuse Carriers IEC60269 (ABB 10x38mm).
- Compliant to Network Rail specification NR/L2/ELP/27409 Issue 2.
- Dimensions W=300mm x H=300mm x D=224mm.
- Weight = 6Kg.

Support

All products come with a standard 12 month warranty with an option to extend if required and a minimum 35 year life expectancy. RSP has an experienced team on hand to provide ongoing support pre, during and after sales.



Contact us to order or get more info

Call us on **01752 969321**

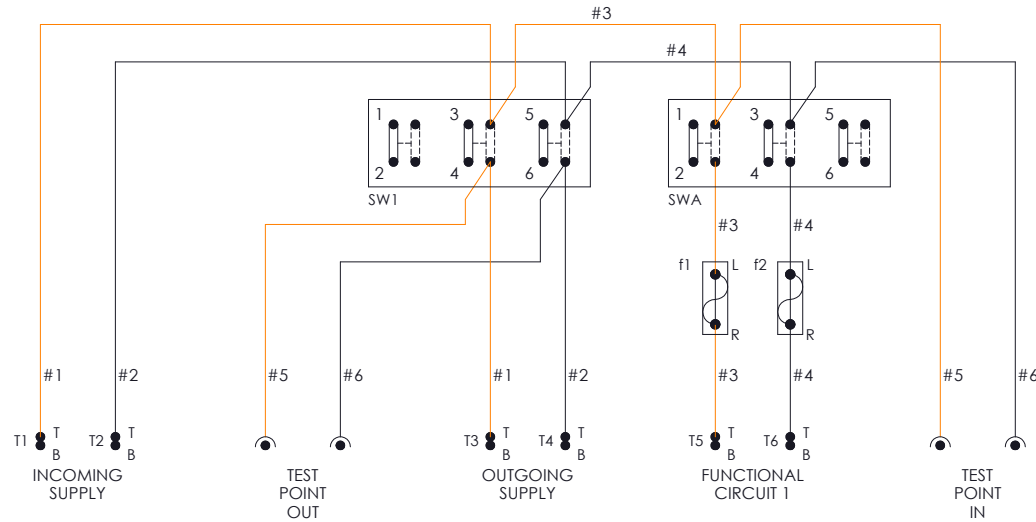
Alternately you can fill out *our online form*



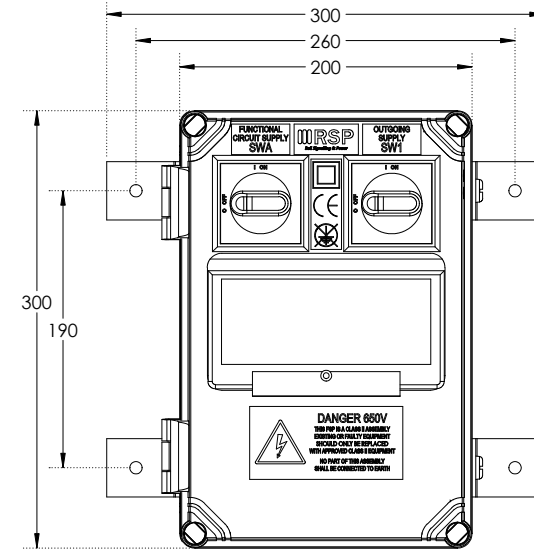
FSP04 - Type 03

FSP04 Type 03

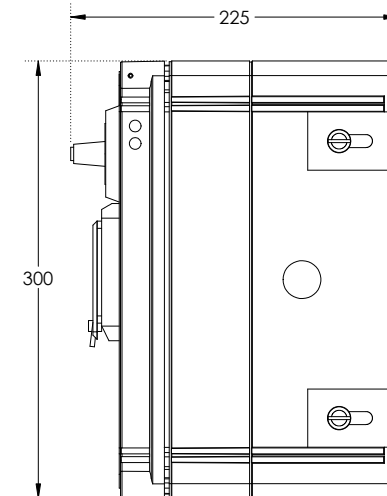
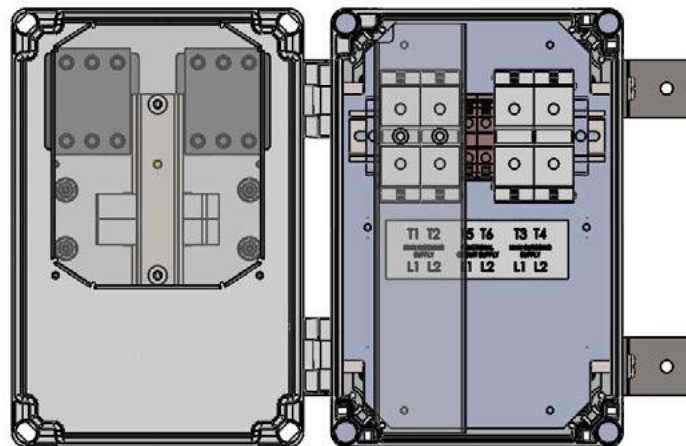
WIRING DIAGRAM



DIMENSIONING



INTERNAL VIEW



FSP04 - Type 04

FSP04 Switchgear Assembly - Type 04

- Railway Cat No. 092/002327.
- RSP Part No. DLLF4P04.
- Class II Distribution Enclosure for 650V Signalling Systems.

Key Features:

- Combined Ring Power IN/OUT Isolator.
- Compatible with Copper (Cu) or Aluminium (Al) Feeder Cables from 16-120mm².
- One Switched and Fused Output Functional Supply.
- Functional Supply Fuse Carriers BS88.
- Compliant to Network Rail specification NR/L2/ELP/27409 Issue 2.
- Dimensions W=300mm x H=300mm x D=224mm.
- Weight = 6Kg.

Support

All products come with a standard 12 month warranty with an option to extend if required and a minimum 35 year life expectancy. RSP has an experienced team on hand to provide ongoing support pre, during and after sales.



Contact us to order or get more info

Call us on **01752 969321**

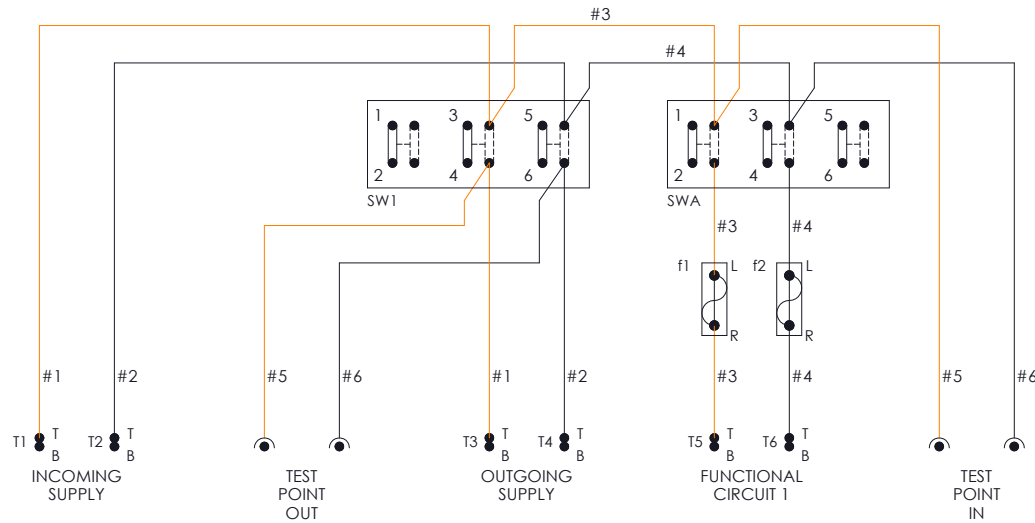
Alternately you can fill out *our online form*



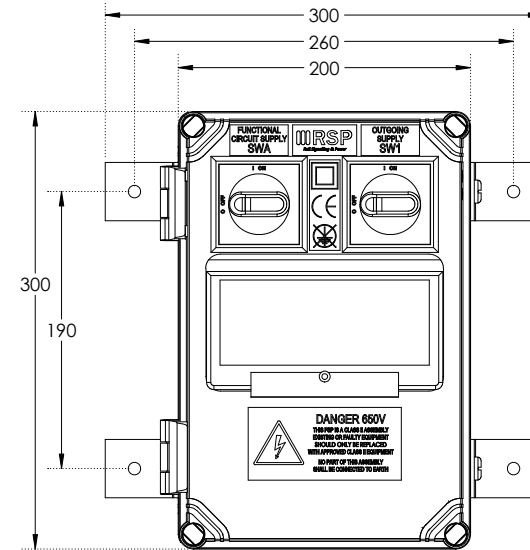
FSP04 - Type 04

FSP04 Type 04

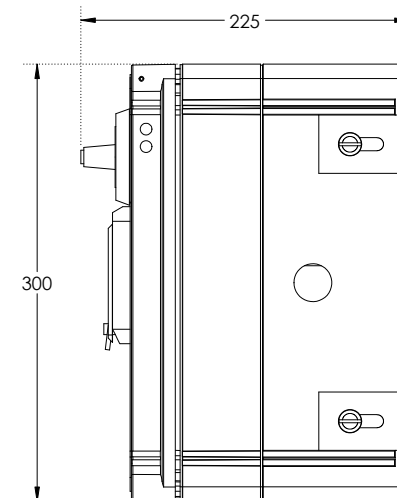
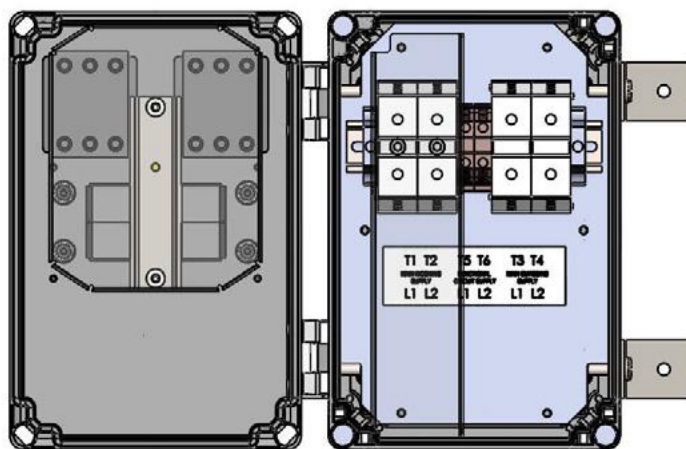
WIRING DIAGRAM



DIMENSIONING



INTERNAL VIEW



FSP04 - Type 05

FSP04 Switchgear Assembly - Type 05

- Railway Cat No. 092/002328.
- RSP Part No. DLLF4P05.
- Class II Distribution Enclosure for 650V Signalling Systems.

Key Features:

- Dedicated Ring Power IN and OUT Isolators.
- Compatible with Copper (Cu) or Aluminium (Al) Feeder Cables from 16-120mm².
- One Switched and Fused Output Functional Supply.
- Functional Supply Fuse Carriers IEC60269 (ABB 10x38mm).
- Compliant to Network Rail specification NR/L2/ELP/27409 Issue 2.
- Dimensions W=300mm x H=300mm x D=224mm.
- Weight = 6Kg.

Support

All products come with a standard 12 month warranty with an option to extend if required and a minimum 35 year life expectancy. RSP has an experienced team on hand to provide ongoing support pre, during and after sales.



Contact us to order or get more info

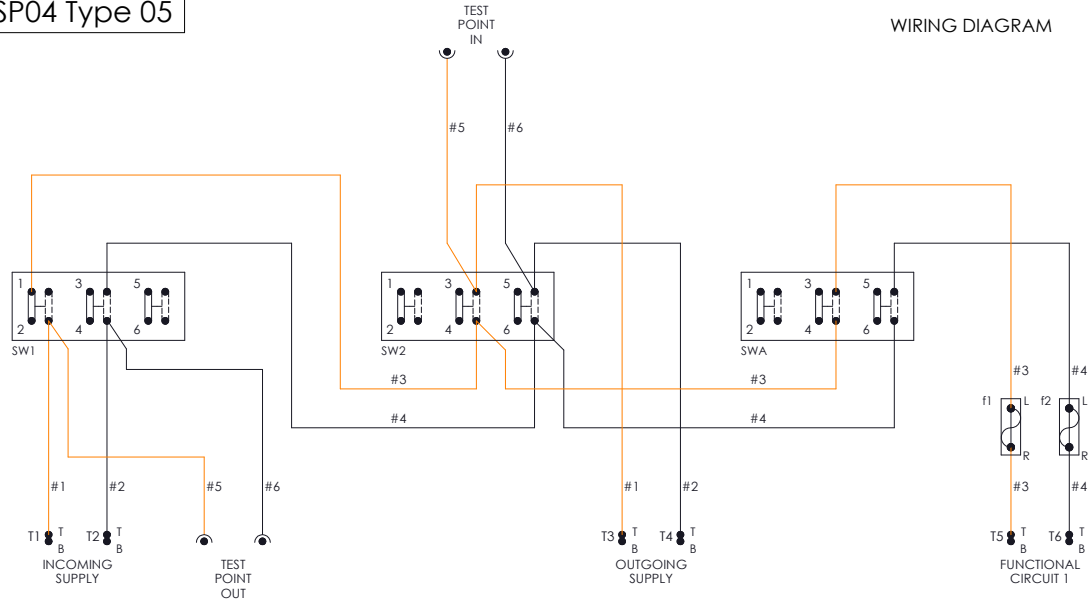
Call us on **01752 969321**

Alternately you can fill out *our online form*

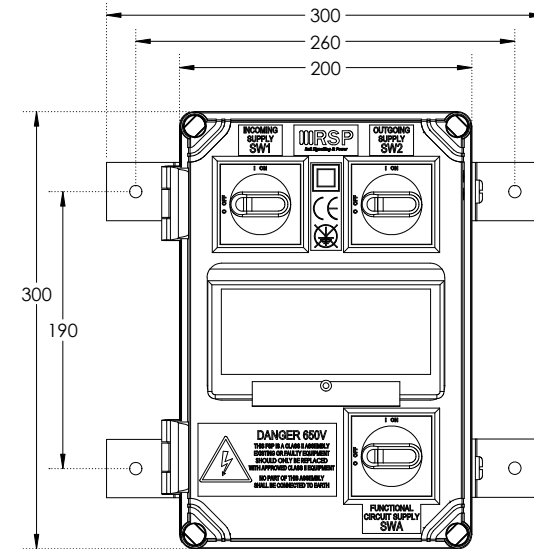


FSP04 - Type 05

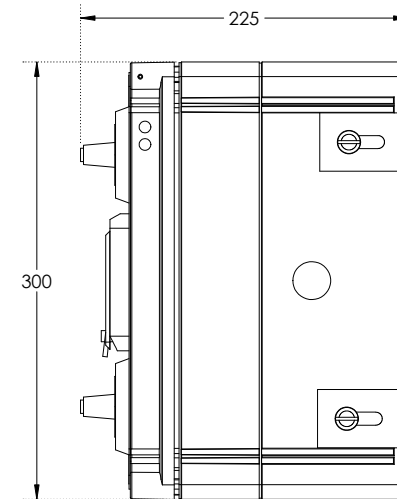
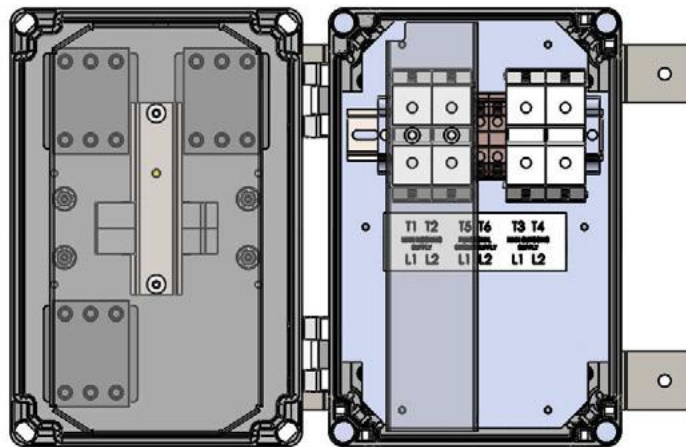
FSP04 Type 05



DIMENSIONING



INTERNAL VIEW



FSP04 - Type 06

FSP04 Switchgear Assembly - Type 06

- ❑ Railway Cat No. 092/002329.
- ❑ RSP Part No. DLLF4P06.
- ❑ Class II Distribution Enclosure for 650V Signalling Systems.

Key Features:

- ❑ Dedicated Ring Power IN and OUT Isolators.
- ❑ Compatible with Copper (Cu) or Aluminium (Al) Feeder Cables from 16-120mm².
- ❑ One Switched and Fused Output Functional Supply.
- ❑ Functional Supply Fuse Carriers BS88.
- ❑ Compliant to Network Rail specification NR/L2/ELP/27409 Issue 2.
- ❑ Dimensions W=300mm x H=300mm x D=224mm.
- ❑ Weight = 6Kg.

Support

All products come with a standard 12 month warranty with an option to extend if required and a minimum 35 year life expectancy. RSP has an experienced team on hand to provide ongoing support pre, during and after sales.



Contact us to order or get more info

Call us on **01752 969321**

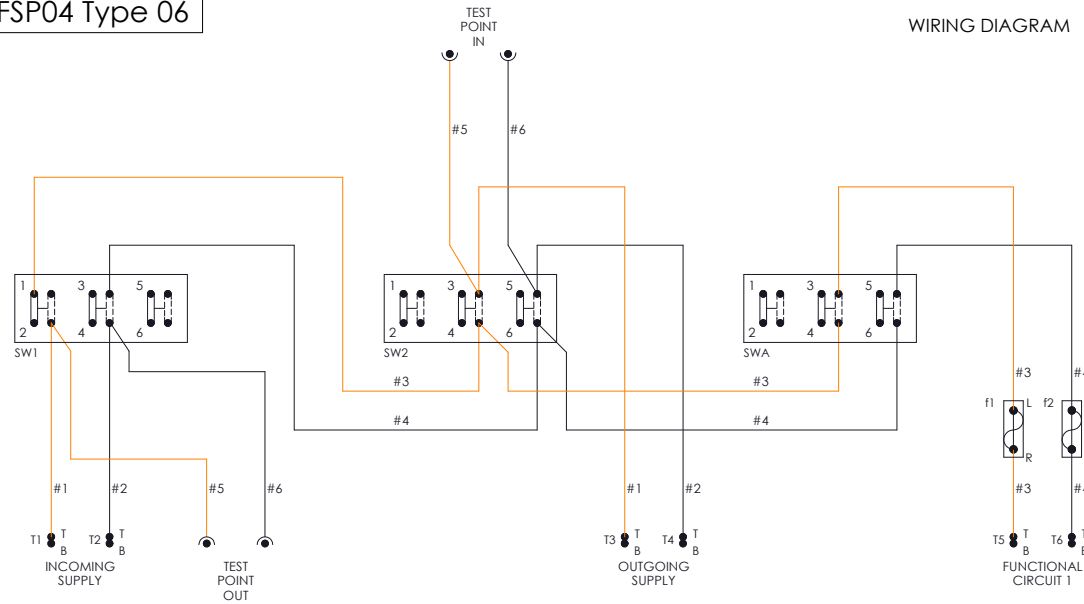
Alternately you can fill out *our online form*



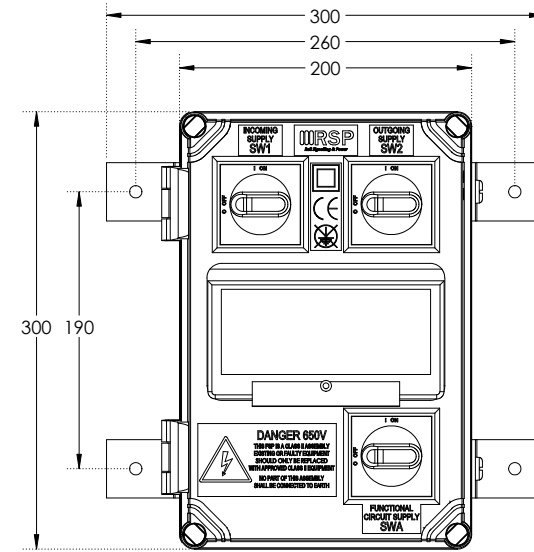
FSP04 - Type 06

FSP04 Type 06

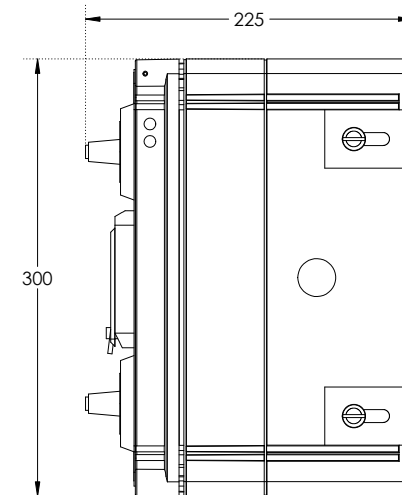
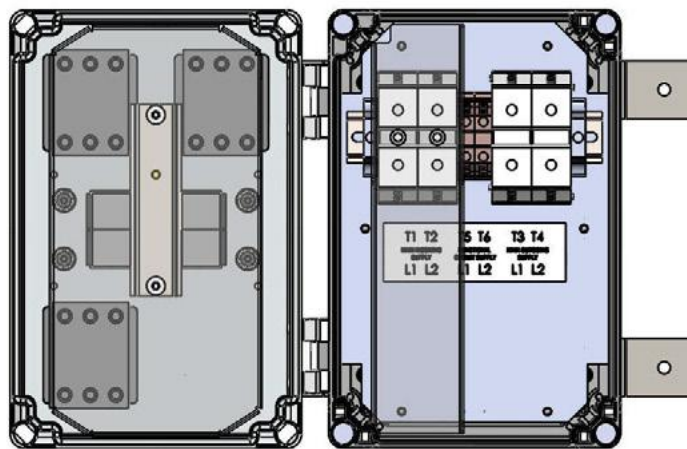
WIRING DIAGRAM



DIMENSIONING



INTERNAL VIEW



FSP04 - Type 07

FSP04 Switchgear Assembly - Type 07

- Railway Cat No. 092/002330.
- RSP Part No. DLLF4P07.
- Class II Distribution Enclosure for 650V Signalling Systems.

Key Features:

- Combined Ring Power IN/OUT Isolator.
- Compatible with Copper (Cu) or Aluminium (Al) Feeder Cables from 16-120mm².
- Two Switched & Fused Output Functional Supplies.
- Functional Supply Fuse Carriers IEC60269 (ABB 10x38mm).
- Compliant to Network Rail specification NR/L2/ELP/27409 Issue 2.
- Dimensions W=400mm x H=300mm x D=221mm.
- Weight = 7.5Kg.

Support

All products come with a standard 12 month warranty with an option to extend if required and a minimum 35 year life expectancy. RSP has an experienced team on hand to provide ongoing support pre, during and after sales.



Contact us to order or get more info

Call us on **01752 969321**

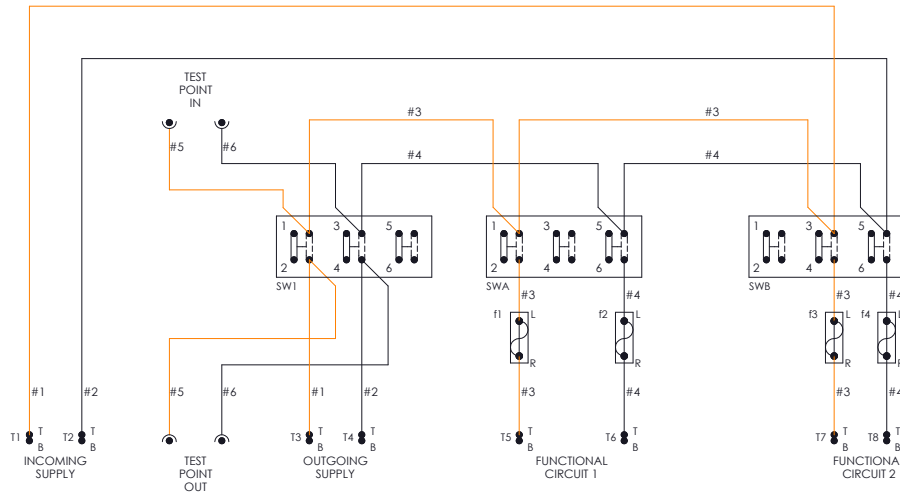
Alternately you can fill out *our online form*



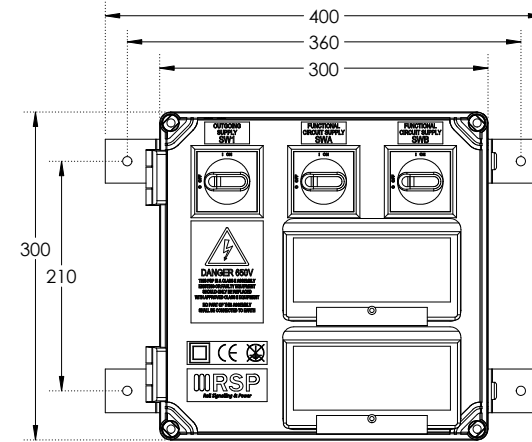
FSP04 - Type 07

FSP04 Type 07

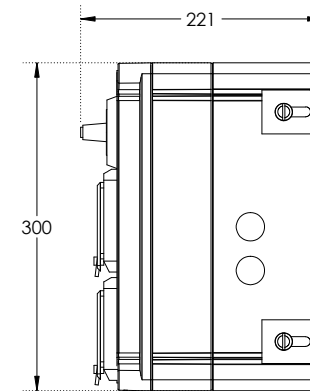
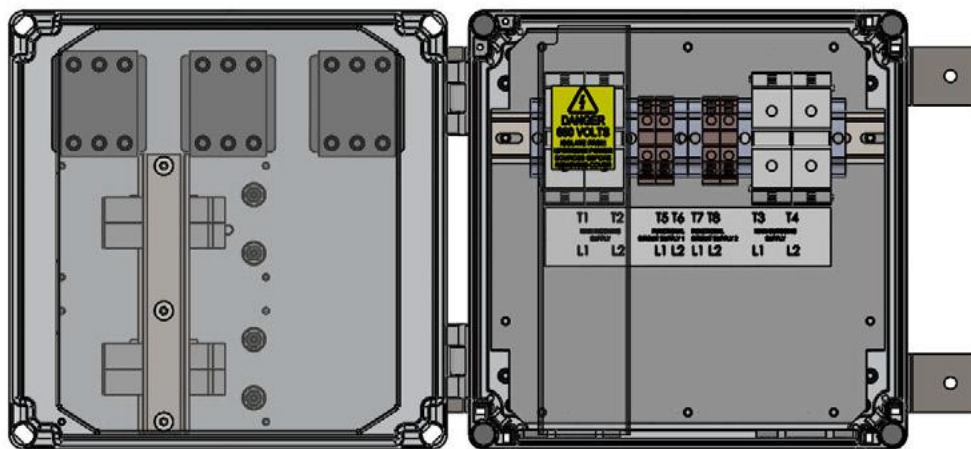
WIRING DIAGRAM



DIMENSIONING



INTERNAL VIEW



FSP04 - Type 08

FSP04 Switchgear Assembly - Type 08

- ❑ Railway Cat No. 092/002331.
- ❑ RSP Part No. DLLF4P0.
- ❑ Class II Distribution Enclosure for 650V Signalling Systems.

Key Features:

- ❑ Combined Ring Power IN/OUT Isolator.
- ❑ Compatible with Copper (Cu) or Aluminium (Al) Feeder Cables from 16-120mm².
- ❑ Two Switched & Fused Output Functional Supplies.
- ❑ Functional Supply Fuse Carriers BS88.
- ❑ Compliant to Network Rail specification NR/L2/ELP/27409 Issue 2.
- ❑ Dimensions W=400mm x H=300mm x D=221mm.
- ❑ Weight = 7.5Kg.

Support

All products come with a standard 12 month warranty with an option to extend if required and a minimum 35 year life expectancy. RSP has an experienced team on hand to provide ongoing support pre, during and after sales.



Contact us to order or get more info

Call us on **01752 969321**

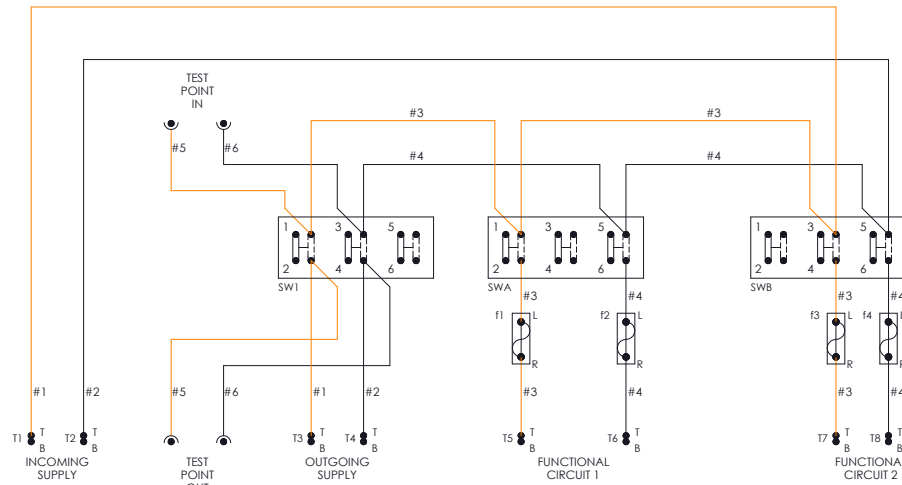
Alternately you can fill out *our online form*



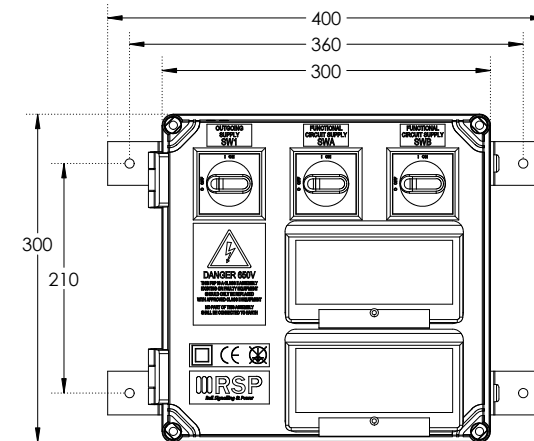
FSP04 - Type 08

FSP04 Type 08

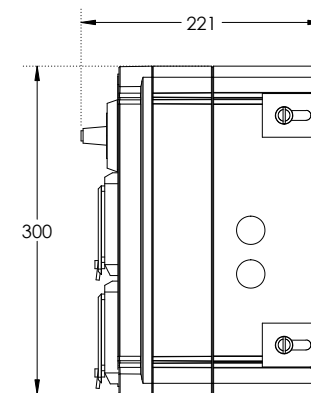
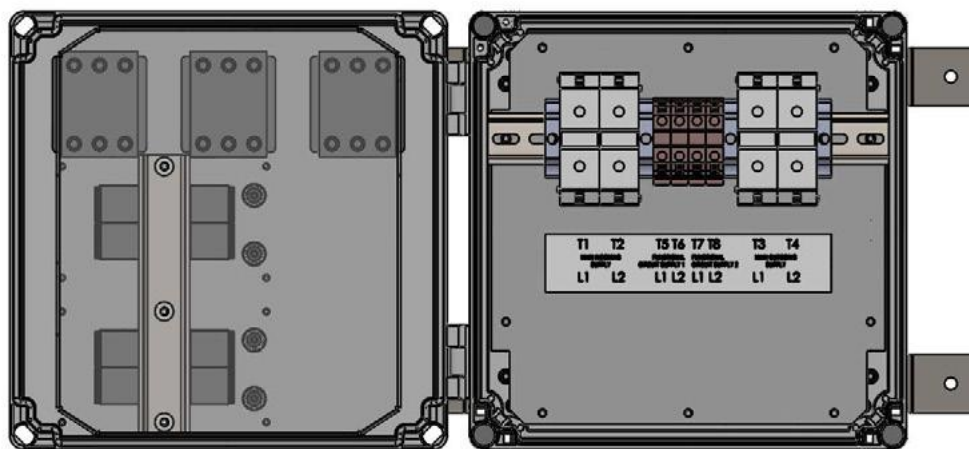
WIRING DIAGRAM



DIMENSIONING



INTERNAL VIEW





FSP04 - Type 09

FSP04 Switchgear Assembly - Type 09

- Railway Cat No. 092/002332.
- RSP Part No. DLLF4P09.
- Class II Distribution Enclosure for 650V Signalling Systems.
- Functional supplies share a common fuse.

Key Features:

- Dedicated Ring Power IN and OUT Isolators.
- Compatible with Copper (Cu) or Aluminium (Al) Feeder Cables from 16-120mm².
- Two Switched Output Functional Supplies sharing a common fuse.
- Functional Supply Fuse Carriers IEC60269 (ABB 10x38mm).
- Compliant to Network Rail specification NR/L2/ELP/27409 Issue 2.
- Dimensions W=400mm x H=300mm x D=221mm.
- Weight = 7.5Kg.

Support

All products come with a standard 12 month warranty with an option to extend if required and a minimum 35 year life expectancy. RSP has an experienced team on hand to provide ongoing support pre, during and after sales.



Contact us to order or get more info

Call us on **01752 969321**

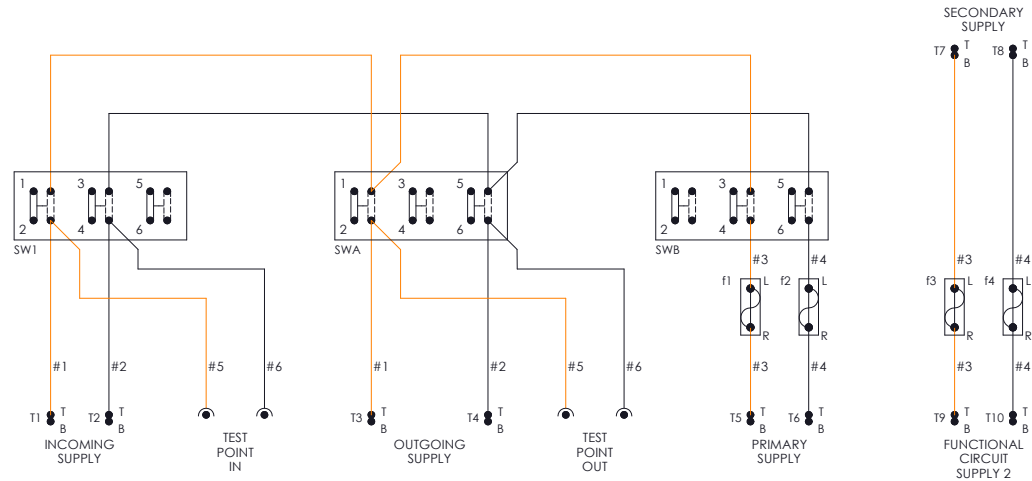
Alternately you can fill out *our online form*



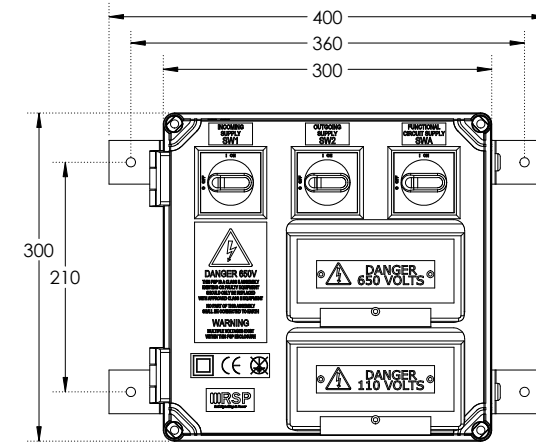
FSP04 - Type 09

FSP04 Type 09

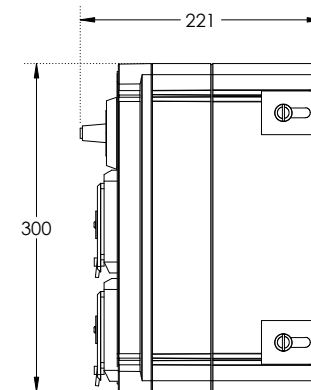
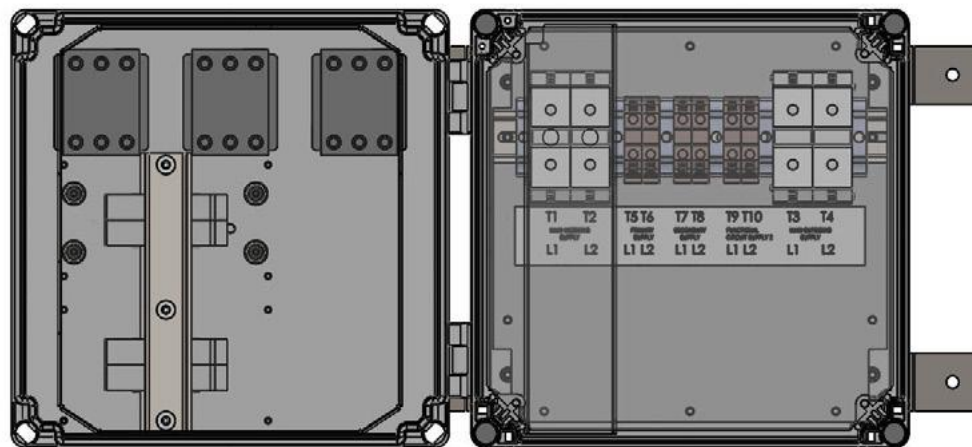
WIRING DIAGRAM



DIMENSIONING



INTERNAL VIEW



FSP04 - Type 10

FSP04 Switchgear Assembly - Type 10

- Railway Cat No. 092/002333.
- RSP Part No. DLLF4P10.
- Class II Distribution Enclosure for 650V Signalling Systems.
- Functional supplies share a common fuse.

Key Features:

- Dedicated Ring Power IN and OUT Isolators.
- Compatible with Copper (Cu) or Aluminium (Al) Feeder Cables from 16-120mm².
- Two Switched Output Functional Supplies sharing a common fuse.
- Functional Supply Fuse Carriers BS88.
- Compliant to Network Rail specification NR/L2/ELP/27409 Issue 2.
- Dimensions W=400mm x H=300mm x D=221mm.
- Weight = 7.5Kg.

Support

All products come with a standard 12 month warranty with an option to extend if required and a minimum 35 year life expectancy. RSP has an experienced team on hand to provide ongoing support pre, during and after sales.



Contact us to order or get more info

Call us on **01752 969321**

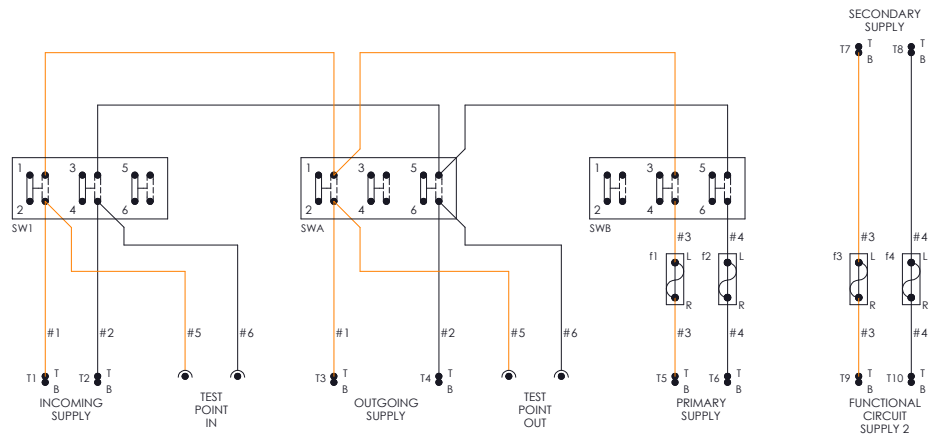
Alternately you can fill out *our online form*



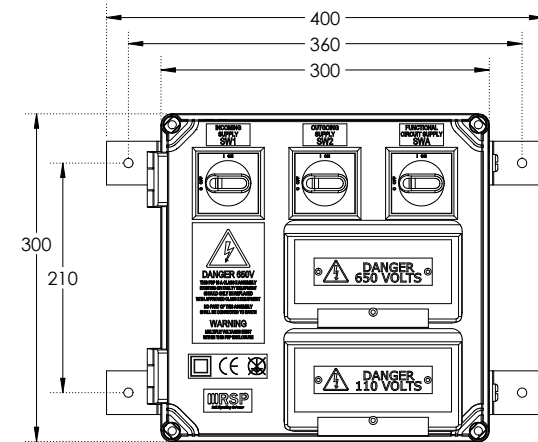
FSP04 - Type 10

FSP04 Type 10

WIRING DIAGRAM



DIMENSIONING



INTERNAL VIEW

